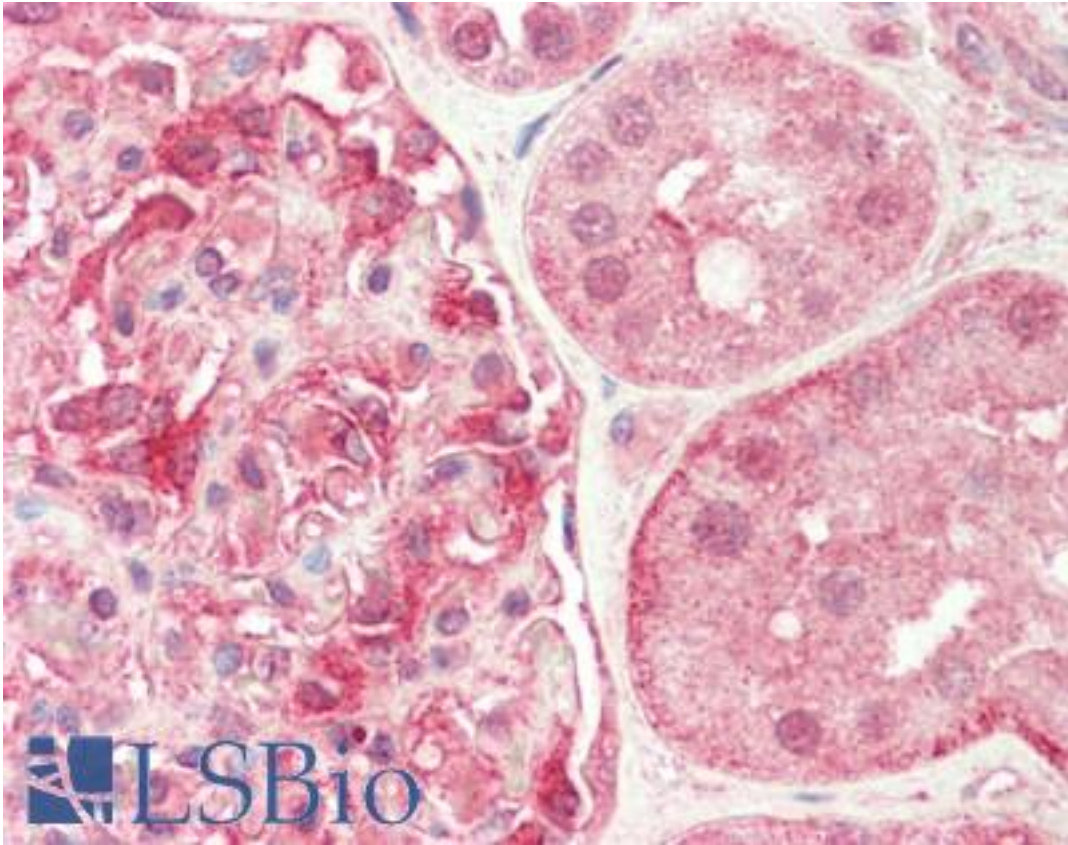


HAUS8 Rabbit anti-Human Polyclonal Antibody - LS-B10617 - LSBio

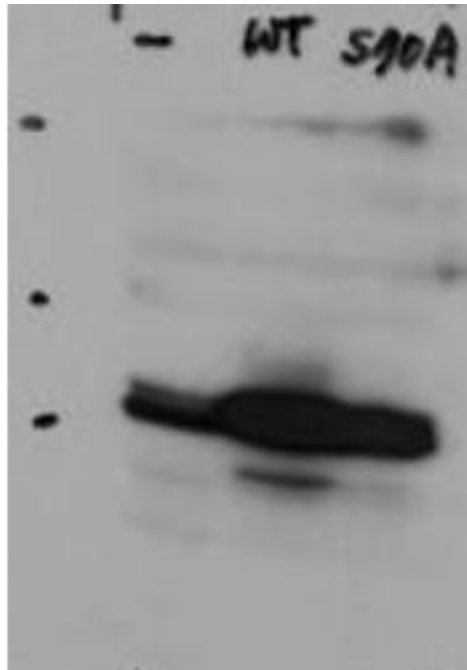
CatalogID:	LS-B10617
Validation:	This antibody replaces catalog number LS-C153859. It has been validated for use in the following assays: IHC-P.
Target:	HAUS augmin-like complex, subunit 8 (HAUS8)
Synonyms:	HAUS8 Antibody, DGT4 Antibody, NY-SAR-48 Antibody, Sarcoma antigen NY-SAR-48 Antibody, HICE1 Antibody
Host	HAUS8 antibody was produced in Rabbit
Clonality:	Polyclonal
Isotype:	IgG
Immunogen Species:	HAUS8 antibody was raised against Human
Antigen Type:	Synthetic peptide
Immunogen:	HAUS8 antibody was raised against anti-Hice1 Antibody was prepared by repeated immunizations with a synthetic peptide corresponding to the region of amino acids containing serine 70 of human Hice1.
Specificity:	A BLAST analysis was used to suggest cross reactivity with Hice1 from human based on 100% sequence homology with the immunogen. Reactivity against homologues from other sources is not known.
Reactivity:	Human
Purification:	Immunoaffinity purified
Presentation:	0.02 M potassium phosphate, 0.15 M sodium chloride, pH 7.2, 0.01% sodium azide, sterile filtered
Recommended Storage:	Short term 4°C, long term aliquot and store at -20°C, avoid freeze thaw cycles.
Usage Summary:	This affinity purified antibody has been tested for use in ELISA and by western blot. Specific conditions for reactivity should be optimized by the end user. Expect a band approximately 44.9 kD in size corresponding to human Hice1 protein by western blotting in the appropriate stimulated tissue or cell lysate or extract.
Uses:	IHC - Paraffin (5 µg/ml), Western blot (0.5 µg/ml), ELISA (1:30000 - 1:45000) (Optimal dilution to be determined by the researcher)
Size:	50 µg

Immunohistochemistry Image:



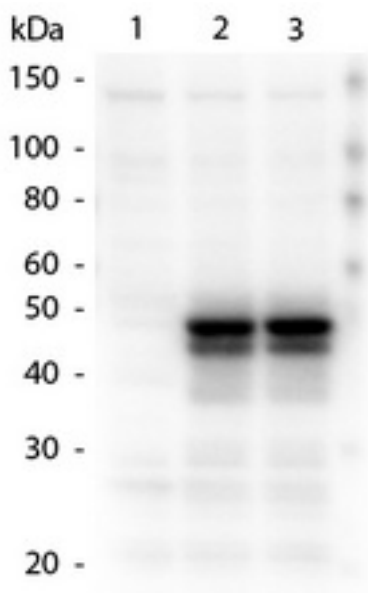
Human Kidney: Formalin-Fixed, Paraffin-Embedded (FFPE)

Western Blot Image:



Western blot of Rabbit Anti-Hice1 antibody. Lane 1: HeLa cell extracts of untransfected cells (-). Lane 2: transfected HeLa cell extracts with Flag X3-Hice1 WT (WT). Lane 3: transfected HeLa cell extracts with Flag X3-Hice1 S70A mutant (70A). Load: 35 ug per lane. Primary antibody: Hice1 antibody at 0.5 g/mL for overnight at 4C. Secondary antibody: IRDye800 Conjugated Goat Anti-Rabbit IgG secondary antibody at 1:10000 for 45 min at RT. Block: 5% BLOTTO overnight at 4C. Predicted/Observed size: 44.8 kDa, 48 kDa for Hice1. Other band(s): none.

Western Blot Image:



Western Blot of Rabbit anti-HAUS8 antibody. Lane 1: 293T Null. Lane 2: 293T WT Hice1. Lane 3: 293T S70A Hice1. Load: 14 μ l per lane. Primary antibody: HAUS8 antibody at 1.24 ug/mL overnight at 4°C. Secondary antibody: Peroxidase rabbit secondary antibody at 1:40,000 for 30 min at RT. Block for 30 min at RT. Predicted/Observed size: 48 kDa, 48 kDa for HAUS8. Other band(s): HAUS8 splice variants and isoforms.

Requested From:	Japan
Laboratory Reagent For In Vitro Research Use Only	
Not for resale without prior written consent from LifeSpan BioSciences, Inc.	
Created on 9/23/2014	
© 2014 LifeSpan BioSciences	