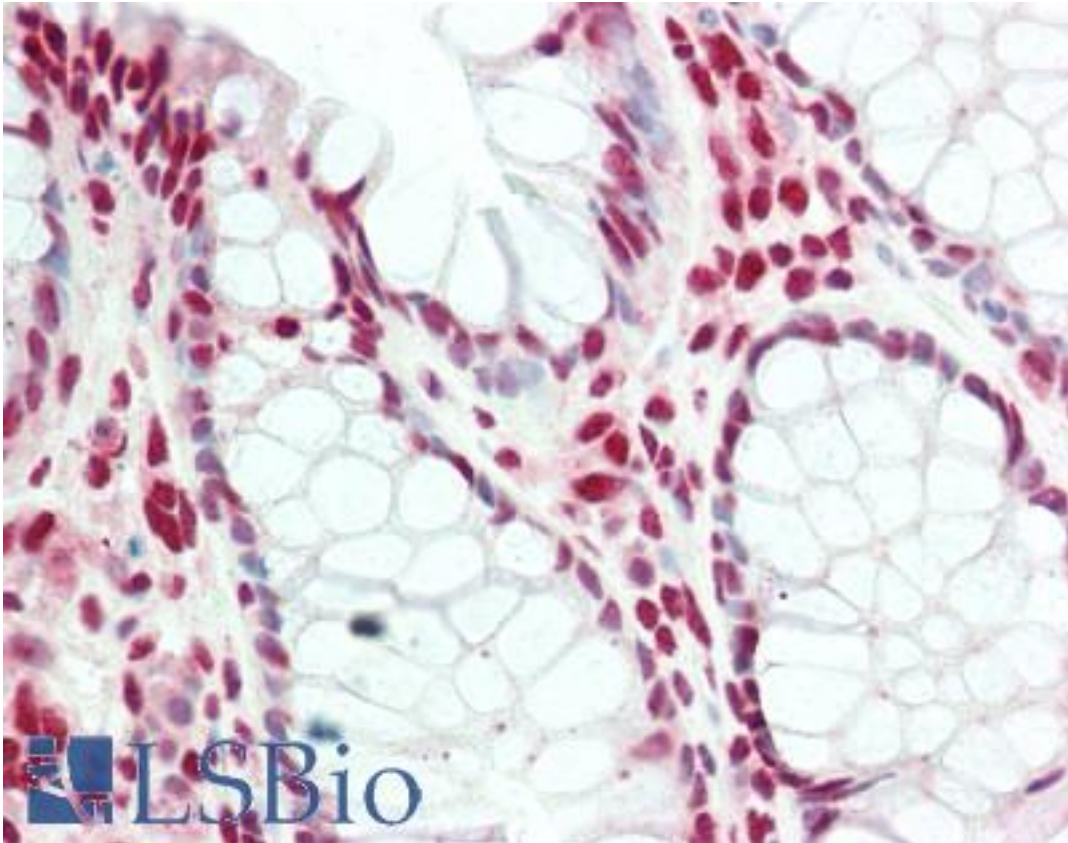


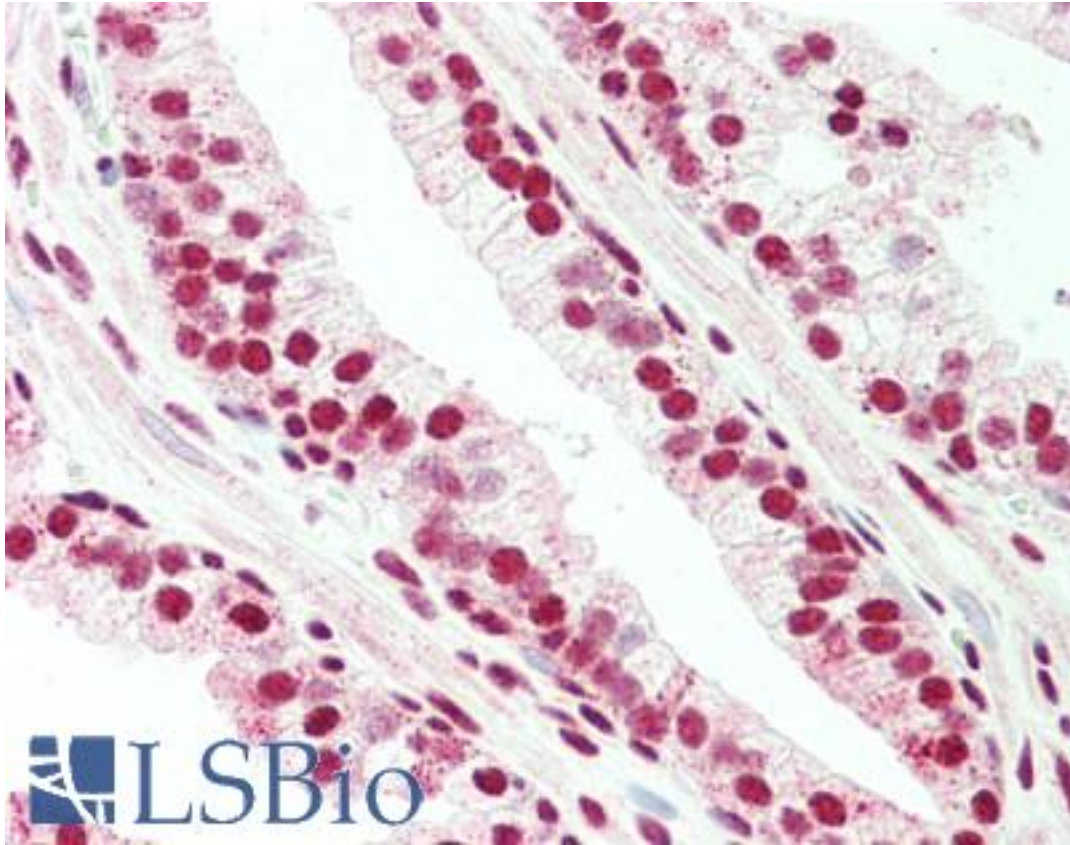
BLIMP1 / PRDM1 Rabbit anti-Human Polyclonal (C-Terminus) Antibody - LS-B10615 - LSBio	
CatalogID:	LS-B10615
Validation:	This antibody replaces catalog number LS-C154252. It has been validated for use in the following assays: IHC-P.
Target:	PR domain containing 1, with ZNF domain (PRDM1)
Synonyms:	PRDM1 Antibody, BLIMP-1 Antibody, BLIMP1 Antibody, PRDI-binding factor-1 Antibody, PRDI-BF1 Antibody, PR domain-containing protein 1 Antibody, PRDI-binding factor 1 Antibody
Host	PRDM1 antibody was produced in Rabbit
Clonality:	Polyclonal
Isotype:	IgG
Immunogen Species:	BLIMP1 / PRDM1 antibody was raised against Human
Antigen Type:	Synthetic peptide
Immunogen:	BLIMP1 / PRDM1 antibody was raised against this affinity purified antibody was prepared from whole rabbit serum produced by repeated immunizations with a synthetic peptide corresponding to a region near the C-terminus of human, mouse, and rat PRDM1/BLIMP1.
Specificity:	This antibody is predicted to react with BLIMP1 and its isoforms from human, mouse, rat and other sources based on a 100% homology with the immunizing sequence. This antibody may also recognize other proteins that show high homology/identity with the BLIMP1 sequence.
Epitope:	C-Terminus
Reactivity:	Human, Mouse, Rat, Dog
Purification:	Immunoaffinity purified
Presentation:	0.02 M potassium phosphate, 0.15 M sodium chloride, pH 7.2, 0.01% sodium azide, sterile filtered
Recommended Storage:	Short term 4°C, long term aliquot and store at -20°C, avoid freeze thaw cycles.
Usage Summary:	This affinity purified antibody has been tested for use in ELISA and western blotting. Specific conditions for reactivity should be optimized by the end user. Expect a band at ~88 kD in size corresponding to BLIMP1 by western blotting in the appropriate cell lysate or extract.
Uses:	IHC - Paraffin (5 µg/ml), Western blot (1:1000), Immunoprecipitation (5 - 10 µg/ml), ELISA (1:65000 - 1:80000) (Optimal dilution to be determined by the researcher)
Size:	50 µg

Immunohistochemistry Image:



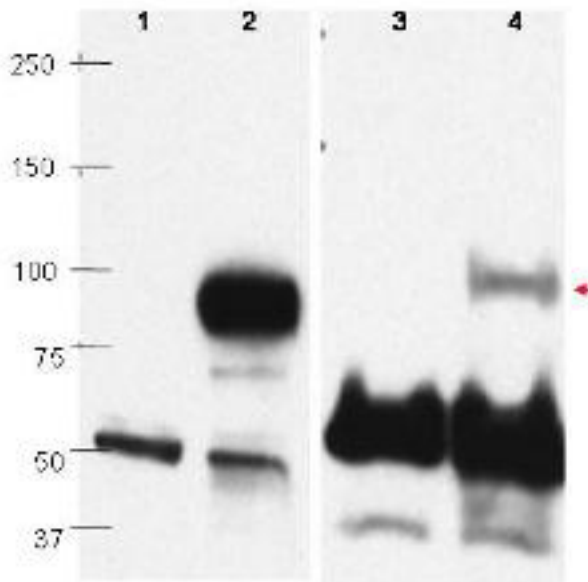
Human Colon: Formalin-Fixed, Paraffin-Embedded (FFPE)

Immunohistochemistry Image:



Human Prostate: Formalin-Fixed, Paraffin-Embedded (FFPE)

Western Blot Image:



Anti-PRDM1/BLIMP1 Antibody - Western Blot. Western blots using affinity purified anti-PRDM1/BLIMP1 antibody show detection of overexpressed PRDM1/BLIMP1 in whole transfected Raji cell lysate (lane 2) at ~88kD. Lane 1 shows mock transfection in whole Raji cell lysate. Detection of endogenous PRDM1/BLIMP1 (lane 4) is illustrated in human plasma cell nuclear extract, but not in Raji whole cell nuclear extract (lane 3). The identity of the lower dark band at ~50-60kD is unknown. Primary antibody was used at a 1:1000 dilution in 5% PBS-Tween. Personal communication, Hyesuk Yoon and Jerry Boss, Emory University, Atlanta, GA.

Requested From:

Japan

Laboratory Reagent For In Vitro Research Use Only

Not for resale without prior written consent from LifeSpan BioSciences, Inc.

Created on 9/23/2014

© 2014 LifeSpan BioSciences