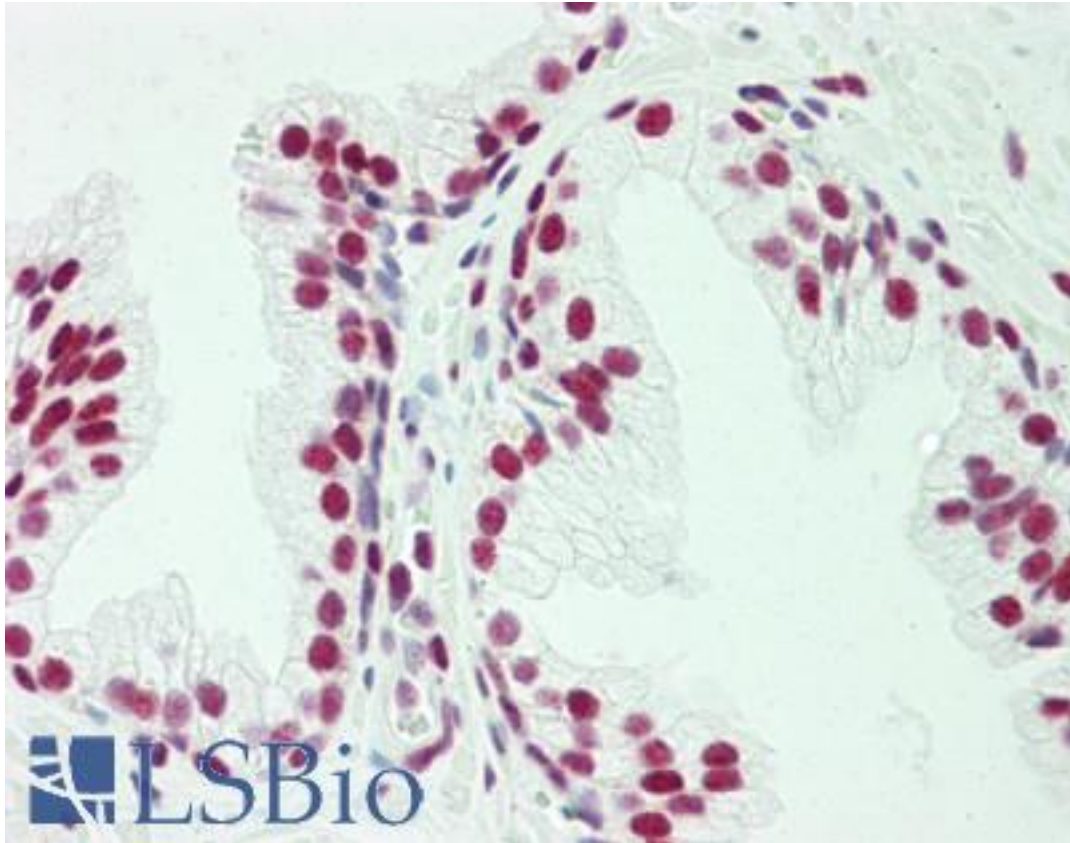


POGZ Rabbit anti-Mouse Polyclonal (N-Terminus) Antibody - LS-B10611 - LSBio

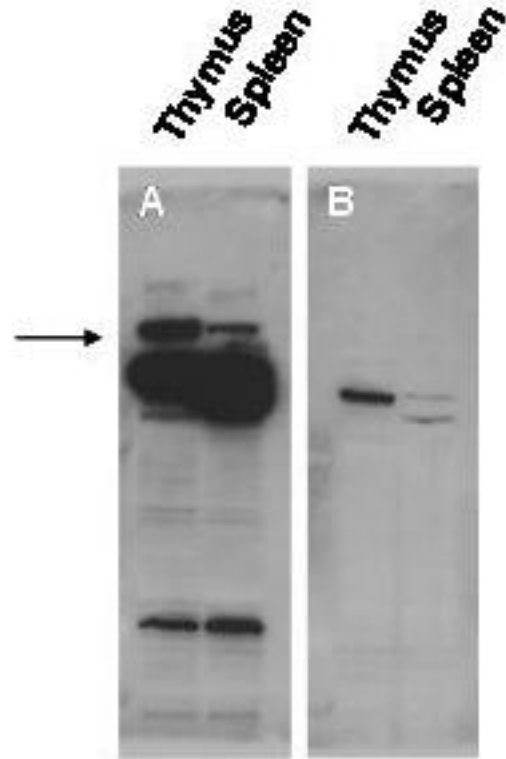
CatalogID:	LS-B10611
Validation:	This antibody replaces catalog number LS-C154237. It has been validated for use in the following assays: IHC-P.
Target:	pogo transposable element with ZNF domain (POGZ)
Synonyms:	POGZ Antibody, KIAA0461 Antibody, SUHW5 Antibody, ZNF280E Antibody, Zinc finger protein 280E Antibody, ZNF635m Antibody, Zinc finger protein 635 Antibody, ZNF635 Antibody
Host	POGZ antibody was produced in Rabbit
Clonality:	Polyclonal
Isotype:	IgG
Immunogen Species:	POGZ antibody was raised against Mouse
Antigen Type:	Synthetic peptide
Immunogen:	POGZ antibody was raised against this affinity purified antibody was prepared from whole rabbit serum produced by repeated immunizations with a synthetic peptide corresponding to a region near the N-terminus of mouse Pogz protein.
Specificity:	This antibody is known to react with mouse Pogz protein. A BLAST analysis was used to suggest cross-reactivity with Pogz from human, dog, short-tailed opossum, cattle, rat, chimpanzee, macaque, olive baboon, and chicken sources based on 100% homology with the immunizing sequence. Reactivity with Pogz from other sources has not been determined.
Epitope:	N-Terminus
Reactivity:	Mouse, Human, Chimpanzee, Rat, Bovine, Dog, Chicken, Macaque, Olive baboon, Short-tailed opossum
Purification:	Immunoaffinity purified
Presentation:	0.02 M potassium phosphate, 0.15 M sodium chloride, pH 7.2, 0.01% sodium azide, sterile filtered
Recommended Storage:	Short term 4°C, long term aliquot and store at -20°C, avoid freeze thaw cycles.
Usage Summary:	This affinity purified antibody has been tested for use in ELISA and western blotting. Specific conditions for reactivity should be optimized by the end user. Expect a band approximately 155 kD in size corresponding to Pogz by western blotting in the appropriate cell lysate or extract.
Uses:	IHC - Paraffin (5 µg/ml), Western blot (1:2000 - 1:20000), ELISA (1:100000 - 1:400000) (Optimal dilution to be determined by the researcher)
Size:	50 µg

Immunohistochemistry Image:



Human Prostate: Formalin-Fixed, Paraffin-Embedded (FFPE)

Western Blot Image:



Anti-Pogz Antibody - Western Blot. Western blot of affinity purified anti-Pogz antibody shows detection of Pogz protein (arrowhead) in adult mouse thymus and spleen tissue lysate (Panel A). The lower molecular weight bands may be cross reactive proteins. Pre-incubation of antibody with the immunizing peptide blocks specific antibody reactivity (Panel B). Primary antibody was used at 1:20000. Personal Communication, K. O. Gudmundsson and J. Keller, NCI, Frederick, MD.

Requested From:

Japan

Laboratory Reagent For In Vitro Research Use Only

Not for resale without prior written consent from LifeSpan BioSciences, Inc.

Created on 9/23/2014

© 2014 LifeSpan BioSciences