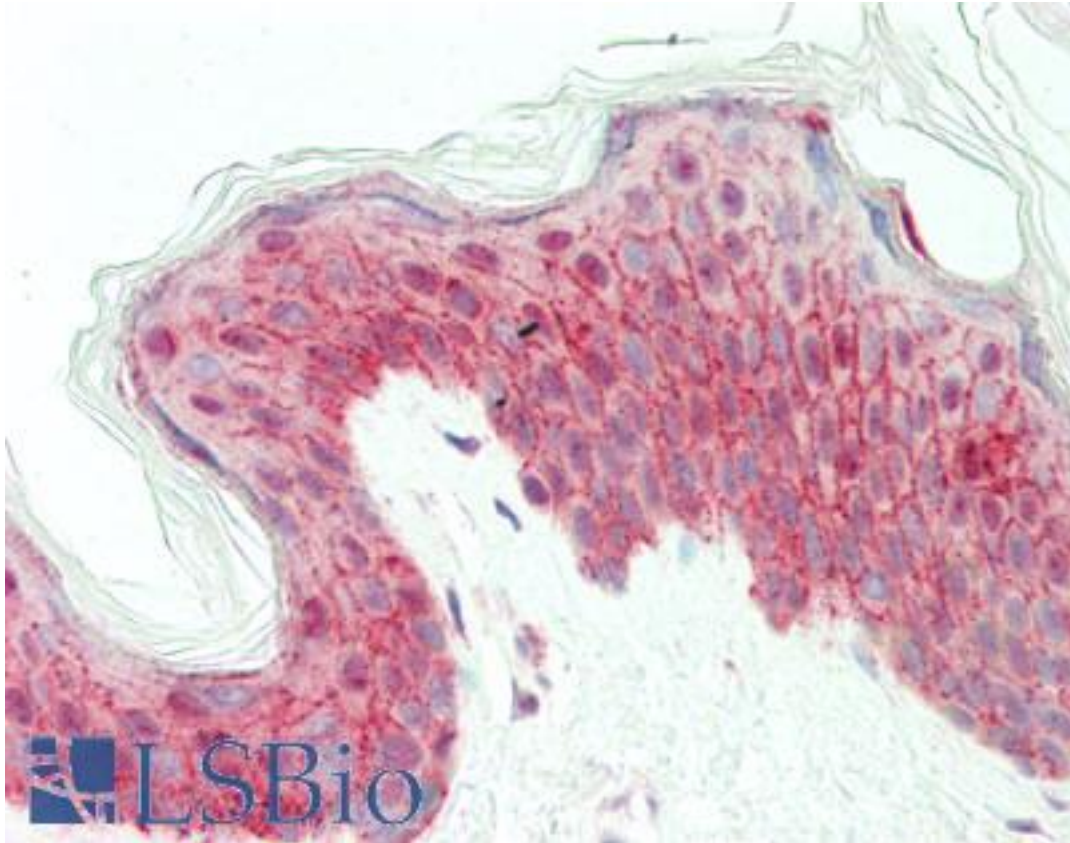


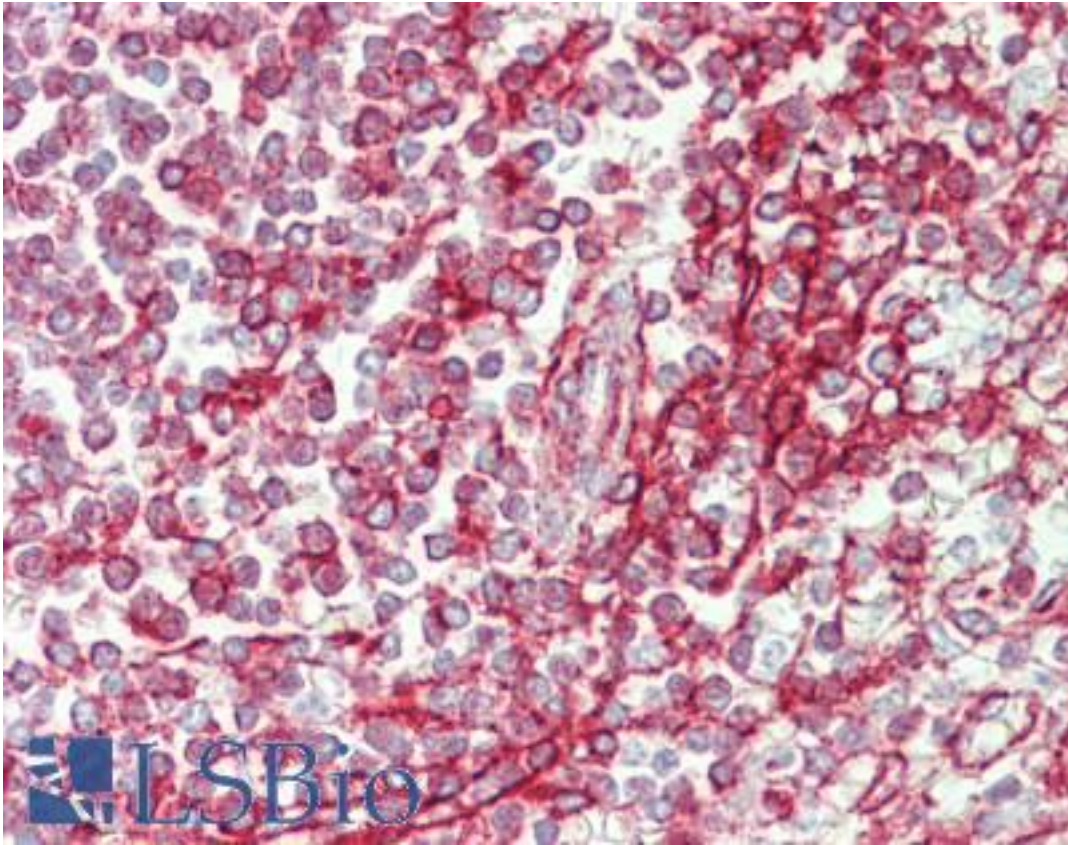
NCOA3 / SRC-3 / AIB1 Rabbit anti-Human Polyclonal (Internal) Antibody - LS-B10610 - LSBio	
<b>CatalogID:</b>	LS-B10610
<b>Validation:</b>	This antibody replaces catalog number LS-C60120. It has been validated for use in the following assays: IHC-P.
<b>Target:</b>	nuclear receptor coactivator 3 (NCOA3)
<b>Synonyms:</b>	NCOA3 Antibody, ACTR Antibody, AIB1 Antibody, BHLHe42 Antibody, CAGH16 Antibody, CBP-interacting protein Antibody, CTG26 Antibody, AIB-1 Antibody, P/CIP Antibody, TNRC14 Antibody, TRAM-1 Antibody, Nuclear receptor coactivator 3 Antibody, PCIP Antibody, RAC-3 Antibody, SRC3 Antibody, TNRC16 Antibody, KAT13B Antibody, NCoA-3 Antibody, SRC-3 Antibody
<b>Host</b>	NCOA3 antibody was produced in Rabbit
<b>Clonality:</b>	Polyclonal
<b>Immunogen Species:</b>	NCOA3 / SRC-3 / AIB1 antibody was raised against Human
<b>Antigen Type:</b>	Synthetic peptide
<b>Immunogen:</b>	NCOA3 / SRC-3 / AIB1 antibody was raised against synthetic peptide corresponding to an internal region of human NCOA3 isoform a protein.
<b>Specificity:</b>	This antibody reacts with several isoforms of human NCOA3 protein (a, b, d, e and f). A BLAST analysis was used to suggest cross-reactivity with NCOA3 from human and macaque sources based on a 100% homology with the immunizing sequence. Expect partial reactivity with NCOA3 from dog, bovine, mouse and rat sources based on partial sequence homology. Cross-reactivity with NCOA3 from other sources has not been determined.
<b>Epitope:</b>	Internal
<b>Reactivity:</b>	Human
<b>Purification:</b>	Immunoaffinity purified
<b>Presentation:</b>	0.02 M potassium phosphate, 0.15 M sodium chloride, pH 7.2, 0.01% sodium azide.
<b>Recommended Storage:</b>	Long term: -20°C; Short term: -20°C
<b>Usage Summary:</b>	This affinity purified antibody has been tested for use in ELISA and western blotting. Specific conditions for reactivity should be optimized by the end user. Expect a band approximately -148 kD in size corresponding to NCOA3 by western blotting in the appropriate cell lysate or extract.
<b>Uses:</b>	IHC - Paraffin (5 µg/ml), Western blot (1:500 - 1:1000), ELISA (1:175000) (Optimal dilution to be determined by the researcher)
<b>Size:</b>	50 µg

**Immunohistochemistry Image:**



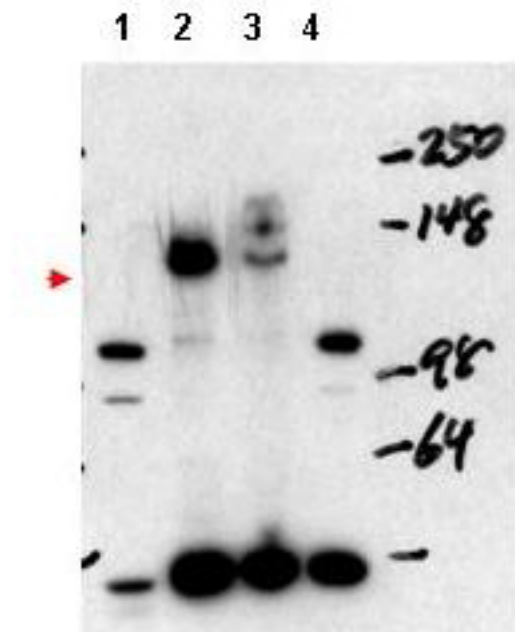
Human Skin: Formalin-Fixed, Paraffin-Embedded (FFPE)

**Immunohistochemistry Image:**



Human Spleen: Formalin-Fixed, Paraffin-Embedded (FFPE)

**Western Blot Image:**



Anti-NCOA3 Antibody - Western Blot. Western blot of affinity purified anti-NCOA3 antibody shows detection of NCOA3 in mouse liver nuclear extract (lane 1), transiently transfected 293 cell lysate (lane 2), HeLa whole cell lysate (lane 3) and mouse thyroid cell nuclear extract (lane 4). The band at ~148 kD, indicated by the arrowhead, corresponds to NCOA3. Mouse NCOA3 (lanes 1 and 4) appear as ~105 kD bands. Pre-incubation of antibody with the immunizing peptide blocks detection of specific band staining (not shown). Personal communication, H. Ying, NCI, Bethesda, MD.

**Requested From:**

Japan

Laboratory Reagent For In Vitro Research Use Only

Not for resale without prior written consent from LifeSpan BioSciences, Inc.

Created on 9/23/2014

© 2014 LifeSpan BioSciences