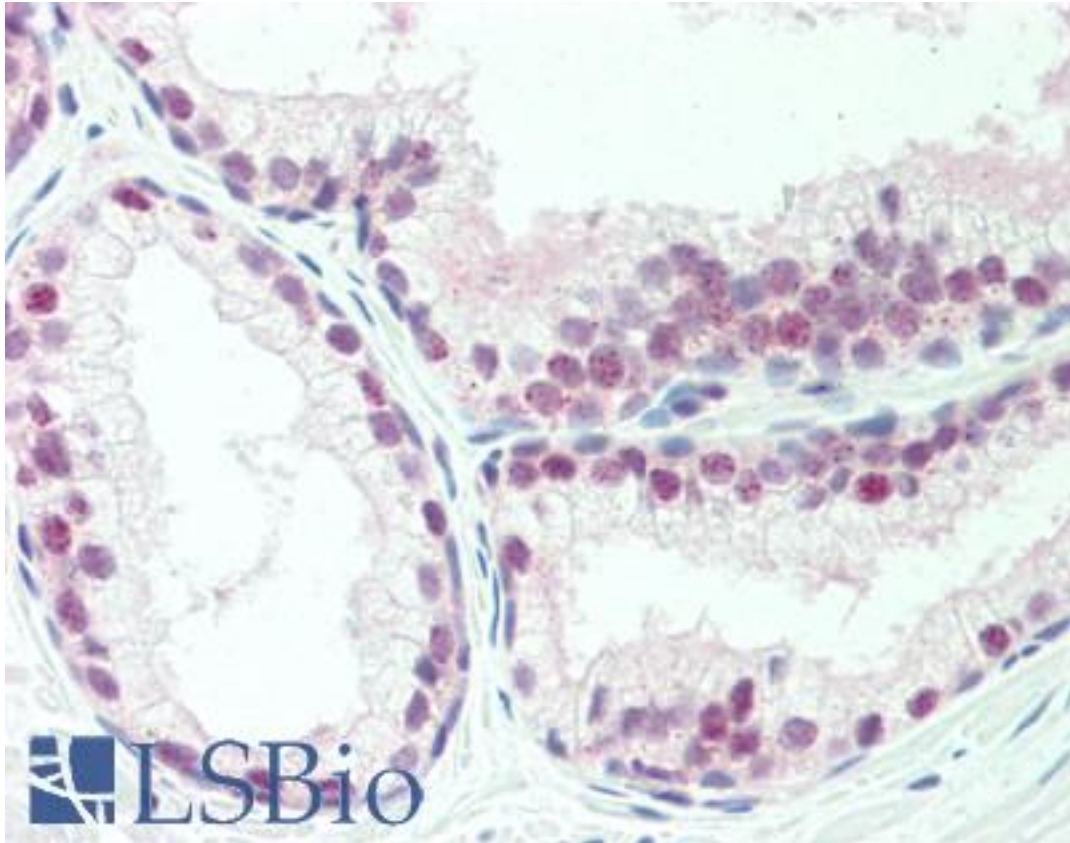


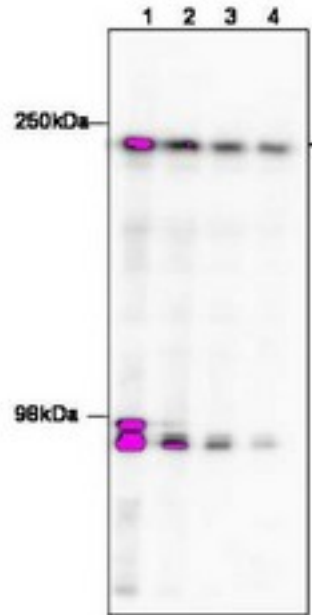
TAF1 Rabbit anti-Human Polyclonal (C-Terminus) Antibody - LS-B10607 - LSBio	
CatalogID:	LS-B10607
Validation:	This antibody replaces catalog number LS-C60107. It has been validated for use in the following assays: IHC-P.
Target:	TAF1 RNA polymerase II, TATA box binding protein (TBP)-associated factor, 250kDa
Synonyms:	TAF1 Antibody, BA2R Antibody, CCG1 Antibody, CCGS Antibody, Cell cycle, G1 phase defect Antibody, CELL CYCLE GENE 1 Antibody, Cell cycle gene 1 protein Antibody, Dystonia 3 (with Parkinsonism) Antibody, DYT3 Antibody, TAF(II)250 Antibody, TBP Associated Factor 1 Antibody, N-TAF1 Antibody, NSCL2 Antibody, p250 Antibody, TAFII250 Antibody, XDP Antibody, KAT4 Antibody, TAF2A Antibody, TAFII-250 Antibody, TBP-associated factor 250 kDa Antibody
Family / Subfamily:	Protein Kinase / TAF1
Host	TAF1 antibody was produced in Rabbit
Clonality:	Polyclonal
Immunogen Species:	TAF1 antibody was raised against Human
Antigen Type:	Synthetic peptide
Immunogen:	TAF1 antibody was raised against synthetic peptide corresponding to amino acids near the carboxyl terminus of human TAF1.
Specificity:	This affinity purified antibody is directed against human TAF1 protein. The product was affinity purified from monospecific antiserum by immunoaffinity chromatography. A BLAST analysis was used to suggest cross-reactivity with TAF1 protein from human, mouse and rat based on 100% homology with the immunizing sequence. Reactivity against homologues from other sources is not known.
Epitope:	C-Terminus
Reactivity:	Human, Mouse, Rat
Purification:	Immunoaffinity purified
Presentation:	0.02 M potassium phosphate, 0.15 M sodium chloride, pH 7.2, 0.01% sodium azide.
Recommended Storage:	Long term: -20°C; Short term: -20°C
Usage Summary:	This affinity purified antibody has been tested for use in ELISA and western blotting. Specific conditions for reactivity should be optimized by the end user. Expect a band approximately 213 kD in size corresponding to TAF1 protein by western blotting in the appropriate cell lysate or extract.
Uses:	IHC - Paraffin (10 µg/ml), Western blot (1:100 - 1:2000), ELISA (1:10000 - 1:50000) (Optimal dilution to be determined by the researcher)
Size:	50 µg

Immunohistochemistry Image:



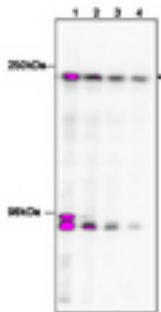
Human Prostate: Formalin-Fixed, Paraffin-Embedded (FFPE)

Western Blot Image:



Anti-TAF1 Antibody - Western Blot. Western blot of affinity purified anti-TAF1 to detect TAF1 in HeLa nuclear extract (arrowhead). The membrane was probed with the primary antibody at dilutions of 1:100 (lane 1), 1:250 (lane 2), 1:500 (Lane 3 and 1:1000 (Lane 4). The identity of the bands at ~95 kD is unknown, but may be degraded TAF1. Personal Communication, Anne Gegonne, CCR-NCI, Bethesda, MD.

Western Blot Image:



Anti-TAF1 Antibody - Western Blot. Western blot of affinity purified anti-TAF1 to detect TAF1 in HeLa nuclear extract (arrowhead). The membrane was probed with the primary antibody at dilutions of 1:100 (lane 1), 1:250 (lane 2), 1:500 (Lane 3 and 1:1000 (Lane 4). The identity of the bands at ~95 kD is unknown, but may be degraded TAF1. Personal Communication, Anne Gegonne, CCR-NCI, Bethesda, MD.

Requested From:

Japan

Laboratory Reagent For In Vitro Research Use Only

Not for resale without prior written consent from LifeSpan BioSciences, Inc.

Created on 9/23/2014

© 2014 LifeSpan BioSciences