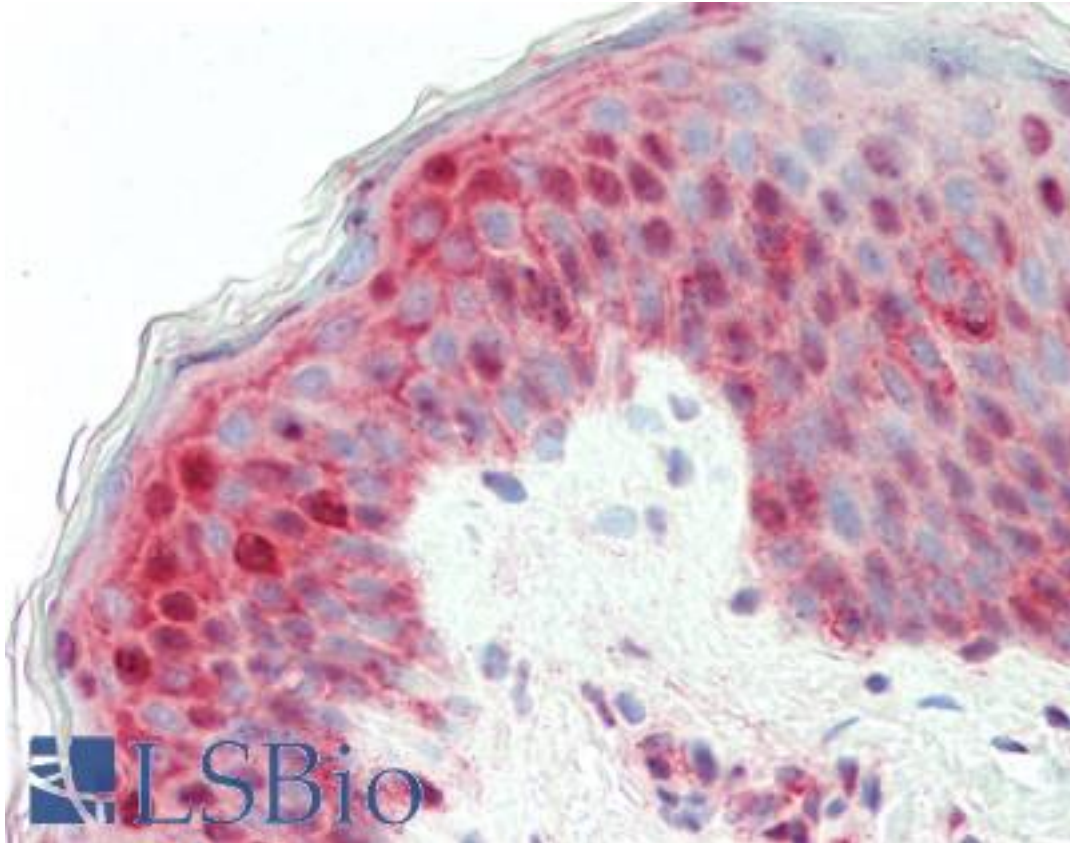


Laminin Rabbit anti-Human Polyclonal Antibody - LS-B10606 - LSBio

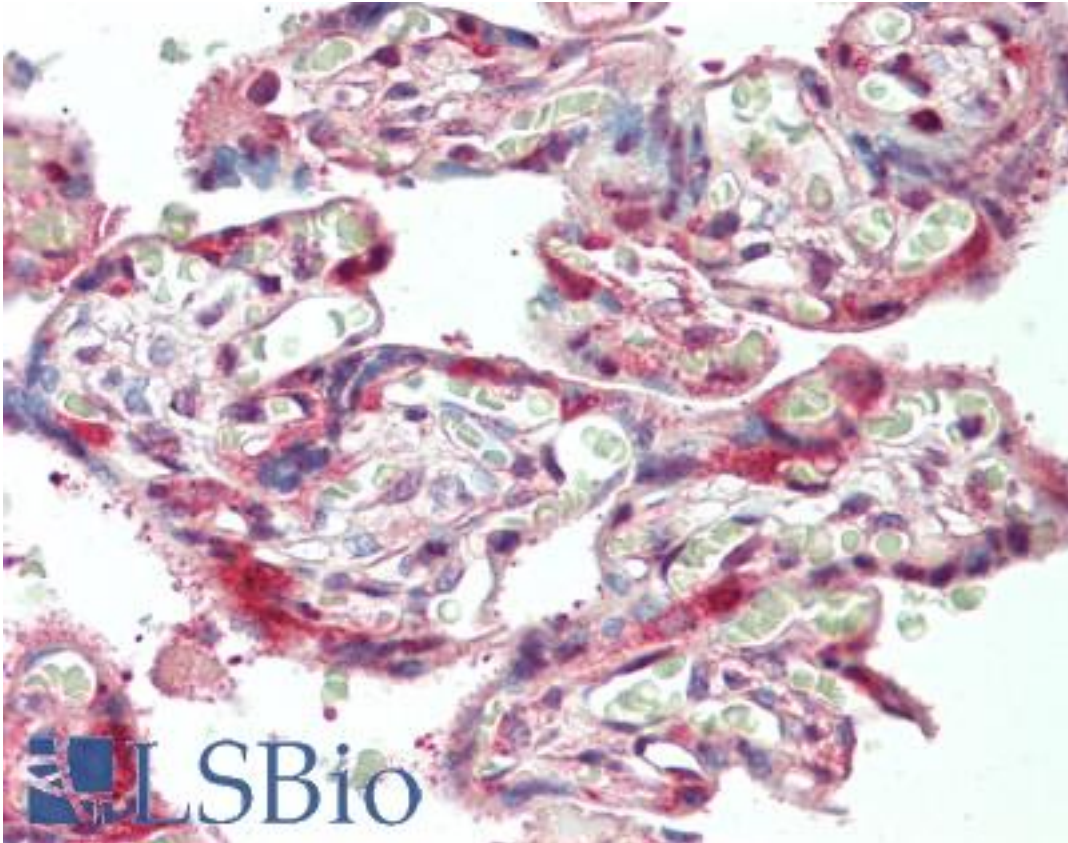
CatalogID:	LS-B10606
Validation:	This antibody replaces catalog number LS-C60066. It has been validated for use in the following assays: IHC-P.
Target:	Laminin
Host	Laminin antibody was produced in Rabbit
Clonality:	Polyclonal
Immunogen Species:	Laminin antibody was raised against Human
Antigen Type:	Synthetic peptide
Immunogen:	Laminin antibody was raised against mixture of synthetic peptides corresponding to regions of adherence on laminin.
Specificity:	Typically less than 1% cross reactivity against other extracellular matrix proteins was detected by ELISA against purified standards. Anti-Laminin (Human) (RABBIT) Antibody reacts with most mammalian Laminins and has negligible cross-reactivity with Type I, II, III, IV, V or VI Collagens or Fibronectin. Non-specific cross reaction of anti-Laminin antibodies with other human serum proteins or non-Laminin extracellular matrix proteins is negligible.
Reactivity:	Human
Purification:	Immunoaffinity purified
Presentation:	0.125 M sodium borate, 0.075 M sodium chloride, 0.005 M EDTA, pH 8.0, 0.01% sodium azide.
Recommended Storage:	Store at 4°C.
Usage Summary:	Anti-Laminin antibodies have been used for indirect trapping ELISA for quantitation of antigen in serum using a standard curve, for immunoprecipitation and for western blotting for highly sensitive qualitative analysis. This product was assayed by immunoblot and found to be reactive against Laminin at a dilution of 1:5000 to 1:10000. This product was also assayed against 1.0 ug of Laminin in a standard sandwich ELISA using Peroxidase conjugated Affinity Purified anti-Rabbit IgG [H&L] (Goat) catalog no. LS-C60884 and ABTS as a substrate for 30 minutes at room temperature.
Uses:	IHC - Paraffin (5 µg/ml), Western blot (1:10000), ELISA (1:4000 - 1:8000) (Optimal dilution to be determined by the researcher)
Size:	50 µg

Immunohistochemistry Image:



Human Skin: Formalin-Fixed, Paraffin-Embedded (FFPE)

Immunohistochemistry Image:



Human Placenta: Formalin-Fixed, Paraffin-Embedded (FFPE)

Requested From:

Japan

Laboratory Reagent For In Vitro Research Use Only

Not for resale without prior written consent from LifeSpan BioSciences, Inc.

Created on 9/23/2014

© 2014 LifeSpan BioSciences