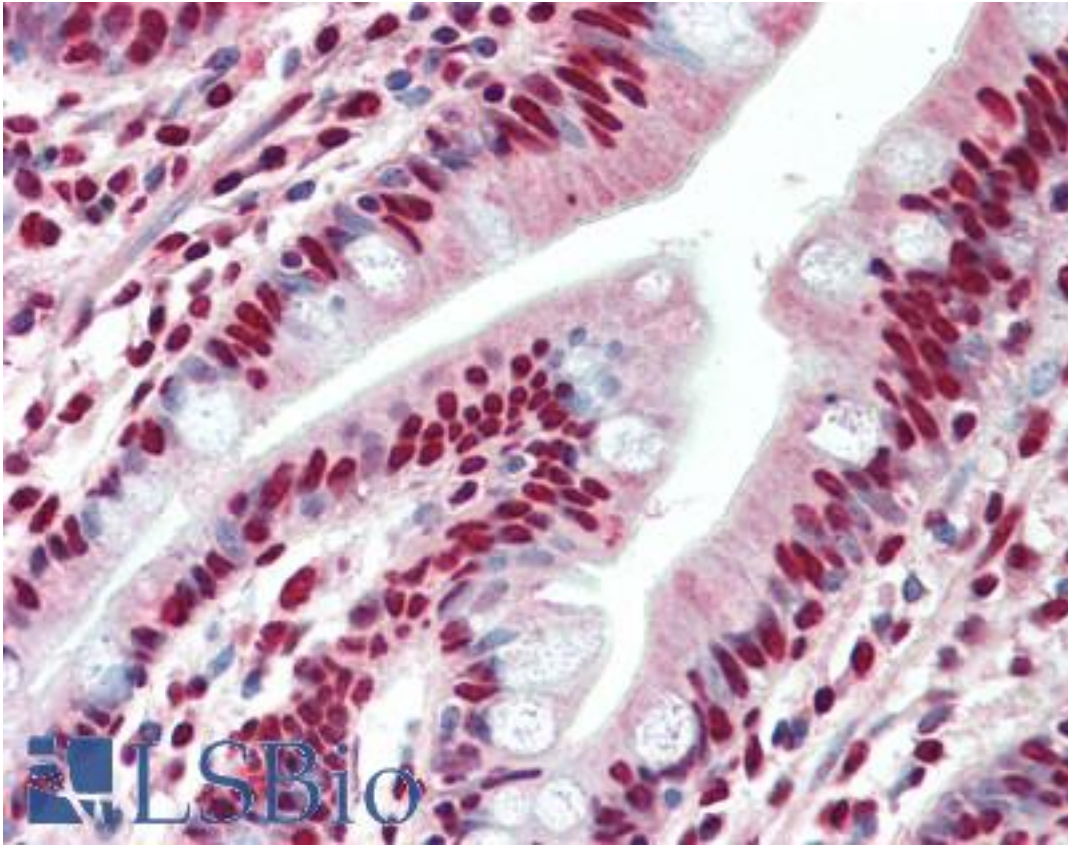


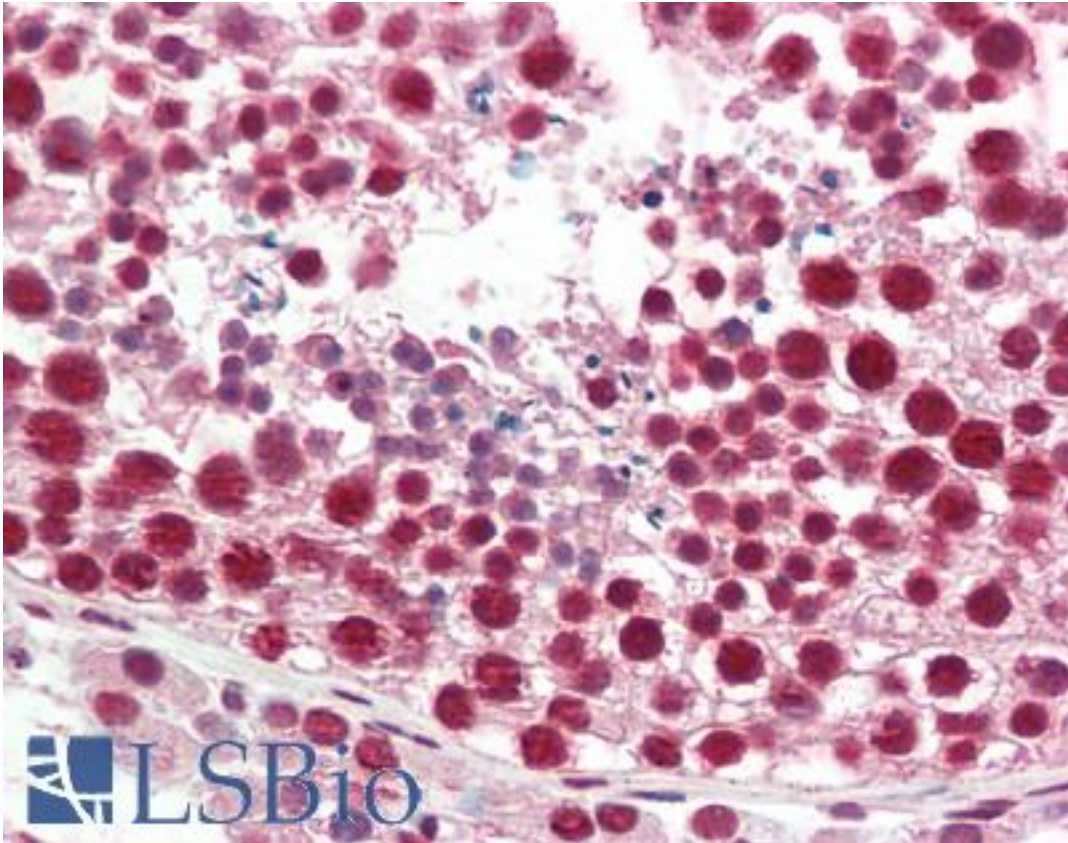
HNRNPA2B1 Goat anti-Human Polyclonal (aa127-137) Antibody - LS-B10604 - LSBio	
<b>CatalogID:</b>	LS-B10604
<b>Validation:</b>	This antibody replaces catalog number LS-C205021. It has been validated for use in the following assays: IHC-P.
<b>Target:</b>	heterogeneous nuclear ribonucleoprotein A2/B1 (HNRNPA2B1)
<b>Synonyms:</b>	HNRNPA2B1 Antibody, HNRNPB1 Antibody, HNRPA2 Antibody, HNRPA2B1 Antibody, HNRPB1 Antibody, HnRNP A2 / hnRNP B1 Antibody, SNRPB1 Antibody, HnRNP A2/B1 Antibody, HNRNPA2 Antibody, RNPA2 Antibody
<b>Host</b>	HNRNPA2B1 antibody was produced in Goat
<b>Clonality:</b>	Polyclonal
<b>Immunogen Species:</b>	HNRNPA2B1 antibody was raised against Human
<b>Antigen Type:</b>	Synthetic peptide
<b>Immunogen:</b>	HNRNPA2B1 antibody was raised against synthetic peptide C-DTIEITDRQS from an internal region of human HNRNPA2B1 (NP_002128.1; NP_112533.1). Percent identity by BLAST analysis: Human, Chimpanzee, Gorilla, Gibbon, Monkey, Tamarin, Mouse, Rat, Ferret, Bovine, Bat, Elephant, Panda, Rabbit, Horse, Pig, Turkey, Zebra finch, Chicken, Platypus, Lizard (100%); Guinea pig, Xenopus (82%).
<b>Specificity:</b>	Human HNRNPA2B1. This antibody is expected to recognize both reported isoforms (NP_002128.1; NP_112533.1).
<b>Epitope:</b>	aa127-137
<b>Reactivity:</b>	Human, Chimpanzee, Gibbon, Monkey, Mouse, Rat, Bat, Bovine, Horse, Pig, Rabbit, Chicken
<b>Purification:</b>	Immunoaffinity purified
<b>Presentation:</b>	Tris saline, pH 7.3, 0.5% BSA, 0.02% sodium azide
<b>Recommended Storage:</b>	Store at -20°C. Minimize freezing and thawing.
<b>Usage Summary:</b>	Peptide ELISA: antibody detection limit dilution 1:64000. Western blot: Approx 36kD band observed in lysates of cell lines HeLa and MCF7 (calculated MW of 36.0kD according to NP_002128.1). Recommended concentration: 1-3 ug/ml.
<b>Uses:</b>	IHC - Paraffin (5 µg/ml), Western blot (1 - 3 µg/ml), ELISA (1:64000) (Optimal dilution to be determined by the researcher)
<b>Size:</b>	50 µg

**Immunohistochemistry Image:**



Human Small Intestine: Formalin-Fixed, Paraffin-Embedded (FFPE)

**Immunohistochemistry Image:**



Human Testis: Formalin-Fixed, Paraffin-Embedded (FFPE)

**Western Blot Image:**



HNRNPA2B1 antibody (0.3 ug/ml) staining of MCF7 lysate (35 ug protein in RIPA buffer). Primary incubation was 1 hour. Detected by chemiluminescence.

**Requested From:**

Japan

Laboratory Reagent For In Vitro Research Use Only

Not for resale without prior written consent from LifeSpan BioSciences, Inc.

Created on 9/23/2014

© 2014 LifeSpan BioSciences