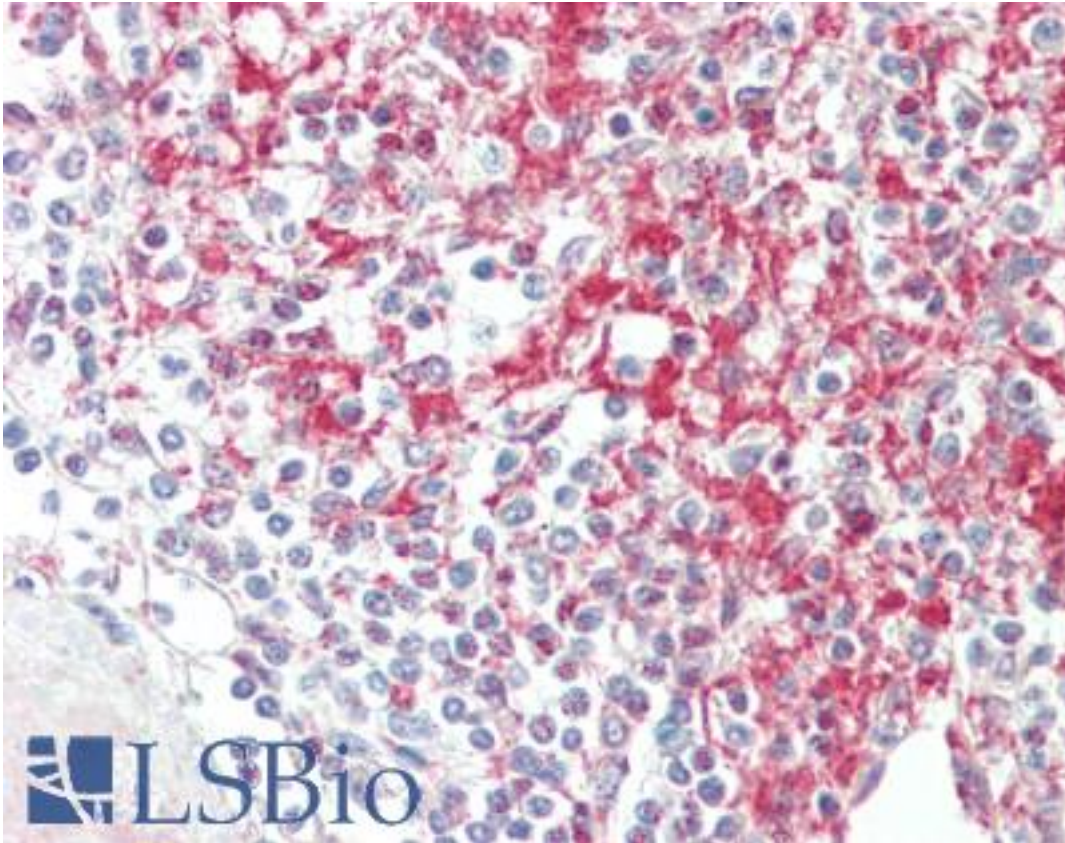


ADAM19 Goat anti-Human Polyclonal (aa574-588) Antibody - LS-B10602 - LSBio

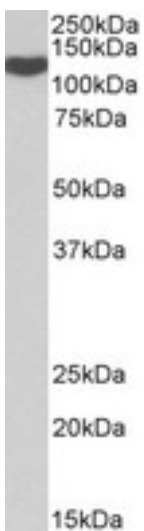
CatalogID:	LS-B10602
Validation:	This antibody replaces catalog number LS-C204964. It has been validated for use in the following assays: IHC-P.
Target:	ADAM metallopeptidase domain 19 (ADAM19)
Synonyms:	ADAM19 Antibody, ADAM 19 Antibody, FKSG34 Antibody, Meltrin beta Antibody, Meltrin-beta Antibody, MLTNB Antibody, MADDAM Antibody
Family / Subfamily:	Protease / Metallopeptidase M12B
Host	ADAM19 antibody was produced in Goat
Clonality:	Polyclonal
Immunogen Species:	ADAM19 antibody was raised against Human
Antigen Type:	Synthetic peptide
Immunogen:	ADAM19 antibody was raised against synthetic peptide KIQCSSEARPLESN from an internal region of human ADAM19 (NP_150377.1). Percent identity by BLAST analysis: Human, Chimpanzee, Gorilla, Gibbon, Monkey, Ferret, Bovine, Elephant, Panda, Rabbit, Pig (100%); Horse (93%); Mouse, Rat (87%); Guinea pig, Platypus, Lizard, Zebrafish (80%).
Specificity:	Human ADAM19
Epitope:	aa574-588
Reactivity:	Human, Chimpanzee, Gibbon, Monkey, Bovine, Pig, Rabbit
Purification:	Immunoaffinity purified
Presentation:	Tris saline, pH 7.3, 0.5% BSA, 0.02% sodium azide
Recommended Storage:	Store at -20°C. Minimize freezing and thawing.
Usage Summary:	Peptide ELISA: antibody detection limit dilution 1:128000. Western blot: Approx 125kD band observed in Human Spleen lysates (calculated MW of 101kD according to NP_150377.1). The observed molecular weight corresponds to the glycosylated form. Recommended concentration: 0.1-0.3 ug/ml.
Uses:	IHC - Paraffin (5 µg/ml), Western blot (0.1 - 0.3 µg/ml), ELISA (1:128000) (Optimal dilution to be determined by the researcher)
Size:	50 µg

Immunohistochemistry Image:



Human Spleen: Formalin-Fixed, Paraffin-Embedded (FFPE)

Western Blot Image:



ADAM19 antibody (0.1 ug/ml) staining of Spleen lysate (35 ug protein in RIPA buffer). Primary incubation was 1 hour. Detected by chemiluminescence.

Requested From:

Japan

Laboratory Reagent For In Vitro Research Use Only

Not for resale without prior written consent from LifeSpan BioSciences, Inc.

Created on 9/23/2014

© 2014 LifeSpan BioSciences