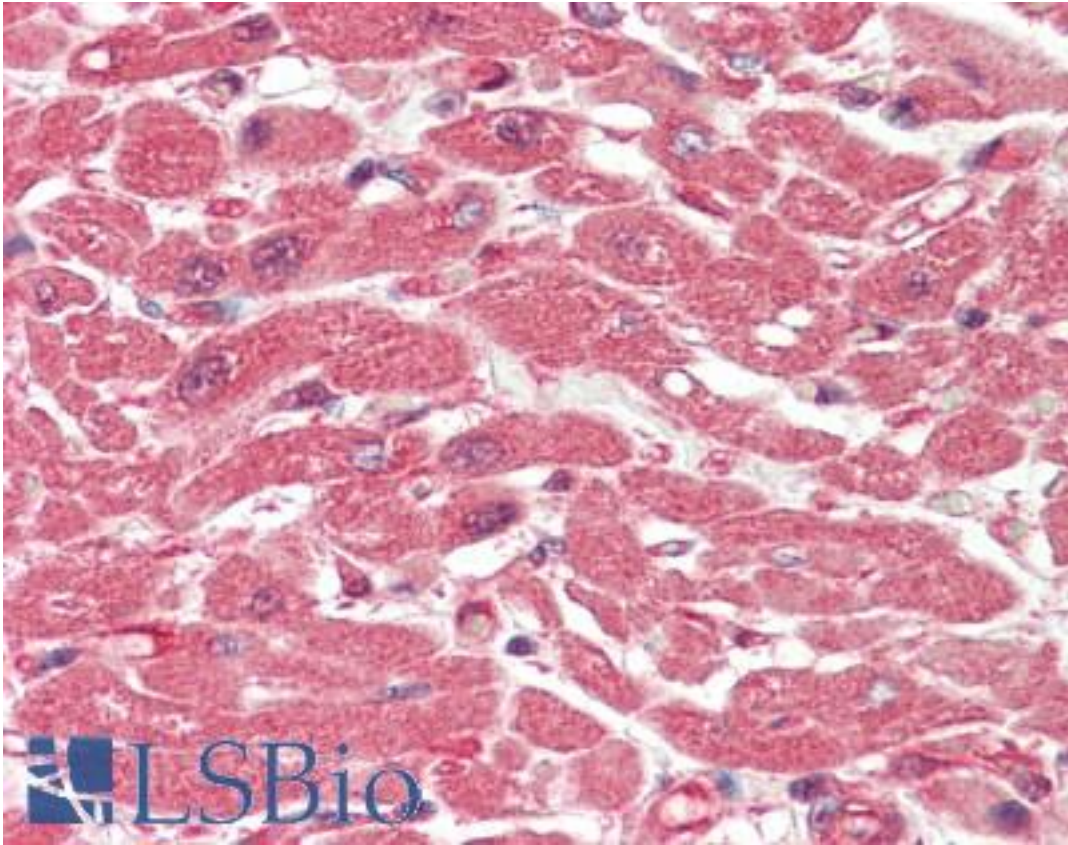


**AHSA1 / AHA1 Rat anti-Mouse Monoclonal (25F2.D9) Antibody - LS-B10601 - LSBio**

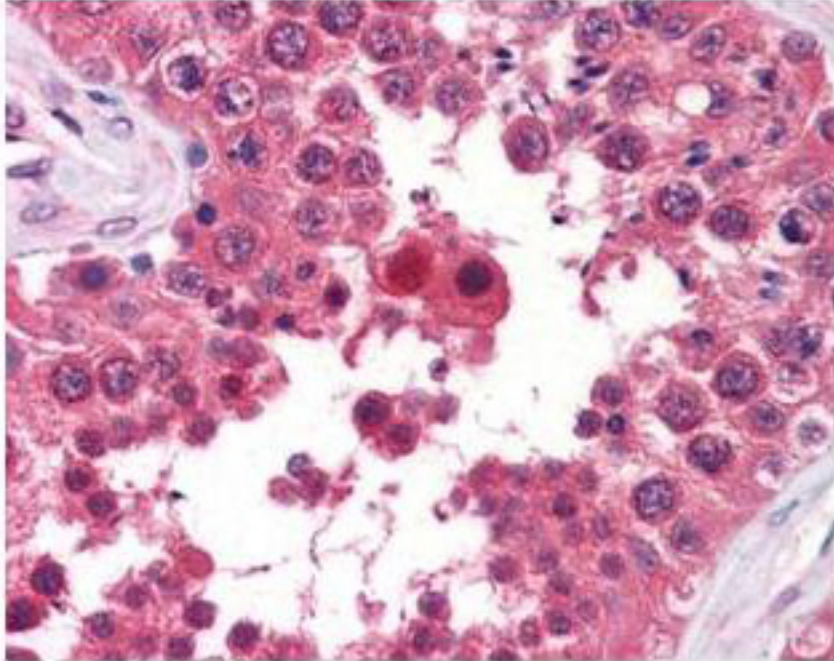
<b>CatalogID:</b>	LS-B10601
<b>Validation:</b>	This antibody replaces catalog number LS-C154069. It has been validated for use in the following assays: IHC-P.
<b>Target:</b>	AHA1, activator of heat shock 90kDa protein ATPase homolog 1 (yeast) (AHSA1)
<b>Synonyms:</b>	AHSA1 Antibody, AHA1 Antibody, C14orf3 Antibody, p38 Antibody
<b>Host</b>	AHSA1 antibody was produced in Rat
<b>Clonality:</b>	Monoclonal
<b>Isotype:</b>	IgG
<b>Clone Name:</b>	25F2.D9
<b>Immunogen Species:</b>	AHSA1 / AHA1 antibody was raised against Mouse
<b>Antigen Type:</b>	Recombinant protein
<b>Immunogen:</b>	AHSA1 / AHA1 antibody was raised against this Protein G purified monoclonal antibody was produced in rats by repeated immunizations with full length recombinant mouse AHA1 protein followed by hybridoma development.
<b>Specificity:</b>	It is directed against human AHA1 protein. A BLAST analysis was used to suggest cross-reactivity with AHA1 protein from mouse, human and chimpanzee based on 100% homology with the immunizing sequence. Reactivity against homologues from other sources is not known.
<b>Reactivity:</b>	Mouse, Human, Chimpanzee
<b>Purification:</b>	Protein G purified
<b>Presentation:</b>	0.02 M potassium phosphate, 0.15 M sodium chloride, pH 7.2, sterile filtered
<b>Recommended Storage:</b>	Short term 4°C, long term aliquot and store at -20°C, avoid freeze thaw cycles.
<b>Usage Summary:</b>	This Protein-G purified antibody has been tested for use in ELISA, immunohistochemistry and western blotting. Specific conditions for reactivity should be optimized by the end user. Expect a band approximately 38-40 kD in size corresponding to AHA1 protein by western blotting in the appropriate cell lysate or extract.
<b>Uses:</b>	IHC - Paraffin (10 µg/ml), Western blot (1:1000), ELISA (1:20000) (Optimal dilution to be determined by the researcher)
<b>Size:</b>	50 µg

**Immunohistochemistry Image:**



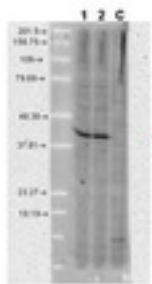
Human Heart: Formalin-Fixed, Paraffin-Embedded (FFPE)

### Immunohistochemistry Image:



Anti-AHA1 Monoclonal Antibody - Immunohistochemistry. anti-AHA1 monoclonal antibody was used at a 5-10 ug/mL to detect AHA1 in the seminiferous tubule of human testis (40X) showing moderate staining. Leydig cells showed faint to moderate staining. expression of AHA1 is reported in many epithelial and lymphatic tissues, with cytoplasmic localization. This antibody showed moderate cytoplasmic staining of a variety of epithelial tissues and lymphoid organs such as spleen and tonsil with minimal background staining. The image shows the localization of the antibody as the precipitated red signal, with a hematoxylin purple nuclear counterstain. Tissue was formalin-fixed and paraffin embedded.

### Western Blot Image:



Anti-AHA1 Monoclonal Antibody - Western Blot. Western blot of anti-AHA1 monoclonal antibody shows detection of a band ~42 kD in size corresponding to AHA1 in A431 whole cell lysate (lane 1) and MCF-7 whole cell lysate (lane 2). A control lane is shown where primary antibody was omitted from the incubation (lane C). Molecular weight markers are shown at the left. For best results, block the membrane overnight with 3% BSA in TBS followed by reaction with primary antibody diluted 1:1000 and use HRP conjugated anti-Rabbit IgG (LS-C60865) secondary antibody diluted 1:20000 in blocking buffer (p/n MB-070) for detection.

<b>Requested From:</b>	Japan
Laboratory Reagent For In Vitro Research Use Only	
Not for resale without prior written consent from LifeSpan BioSciences, Inc.	
Created on 9/23/2014	
© 2014 LifeSpan BioSciences	