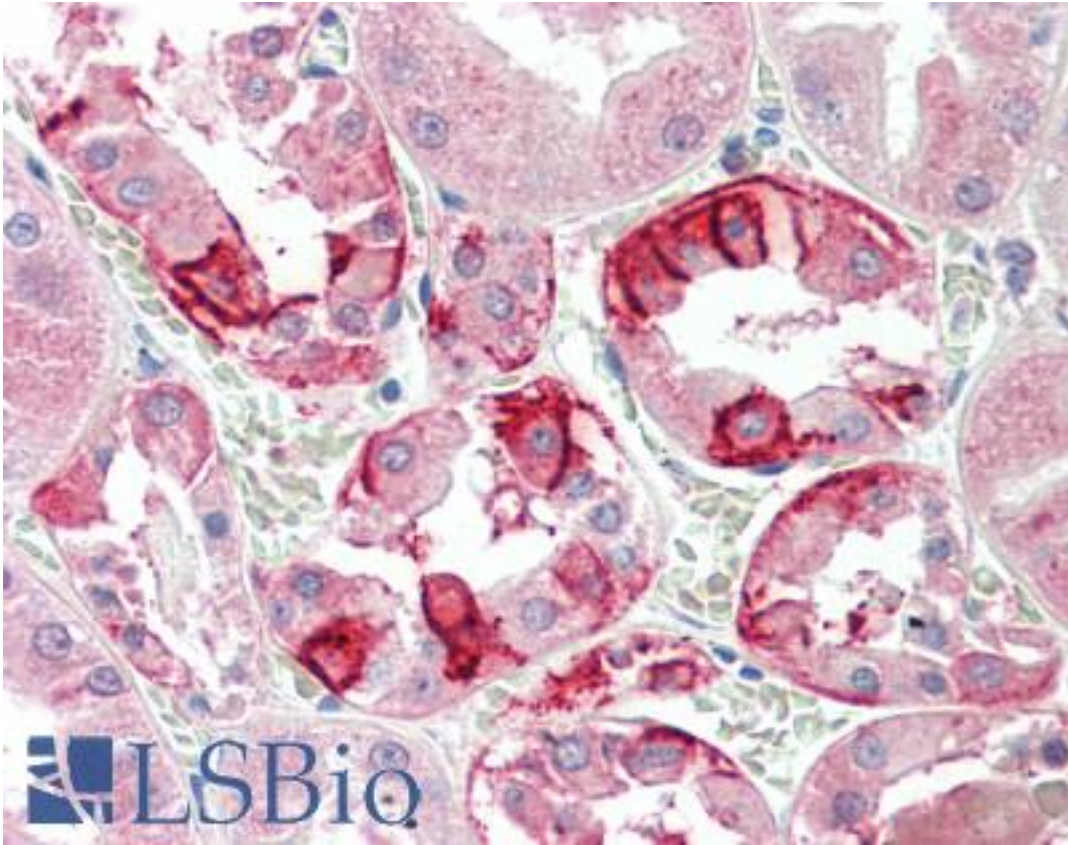


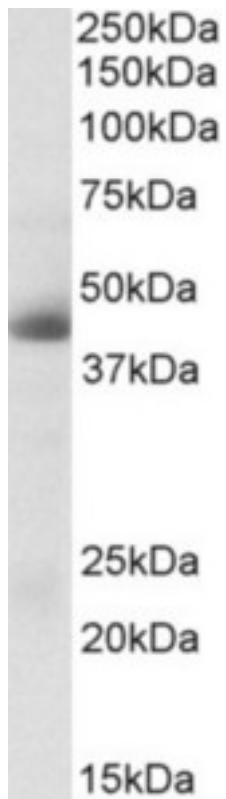
CA12 / Carbonic Anhydrase XII Goat anti-Human Polyclonal (aa188-199) Antibody - LS-B10599 - LSBio	
CatalogID:	LS-B10599
Validation:	This antibody replaces catalog number LS-C204977. It has been validated for use in the following assays: IHC-P.
Target:	carbonic anhydrase XII (CA12)
Synonyms:	CA12 Antibody, CA-XII Antibody, Carbonic anhydrase 12 Antibody, Carbonic dehydratase Antibody, CAXII Antibody, HsT18816 Antibody, Tumor antigen HOM-RCC-3.1.3 Antibody, Carbonate dehydratase XII Antibody, Carbonic anhydrase XII Antibody
Host	CA12 antibody was produced in Goat
Clonality:	Polyclonal
Immunogen Species:	CA12 / Carbonic Anhydrase XII antibody was raised against Human
Antigen Type:	Synthetic peptide
Immunogen:	CA12 / Carbonic Anhydrase XII antibody was raised against synthetic peptide C-SHLQHVKYKGQE from an internal region of human CA12 / Carbonic Anhydrase XII (NP_001209.1; NP_996808.1). Percent identity by BLAST analysis: Human, Chimpanzee, Gorilla, Gibbon, Monkey, Bat (100%); Mouse, Rat, Elephant, Horse, Guinea pig (92%).
Specificity:	Human CA12 / Carbonic Anhydrase XII. This antibody is expected to recognize both reported isoforms (NP_001209.1; NP_996808.1).
Epitope:	aa188-199
Reactivity:	Human, Chimpanzee, Gibbon, Monkey, Bat
Purification:	Immunoaffinity purified
Presentation:	Tris saline, pH 7.3, 0.5% BSA, 0.02% sodium azide
Recommended Storage:	Store at -20°C. Minimize freezing and thawing.
Usage Summary:	Peptide ELISA: antibody detection limit dilution 1:128000. Western blot: Approx 45kD band observed in Human Kidney lysates (calculated MW of 39.5kD according to NP_001209.1). Recommended concentration: 0.3-1 ug/ml.
Uses:	IHC - Paraffin (5 µg/ml), Western blot (0.3 - 1 µg/ml), ELISA (1:128000) (Optimal dilution to be determined by the researcher)
Size:	50 µg

Immunohistochemistry Image:



Human Kidney: Formalin-Fixed, Paraffin-Embedded (FFPE)

Western Blot Image:



CA12 antibody (0.3 ug/ml) staining of Human Kidney lysate (35 ug protein in RIPA buffer). Primary incubation was 1 hour. Detected by chemiluminescence.

Requested From:

Japan

Laboratory Reagent For In Vitro Research Use Only

Not for resale without prior written consent from LifeSpan BioSciences, Inc.

Created on 9/23/2014

© 2014 LifeSpan BioSciences