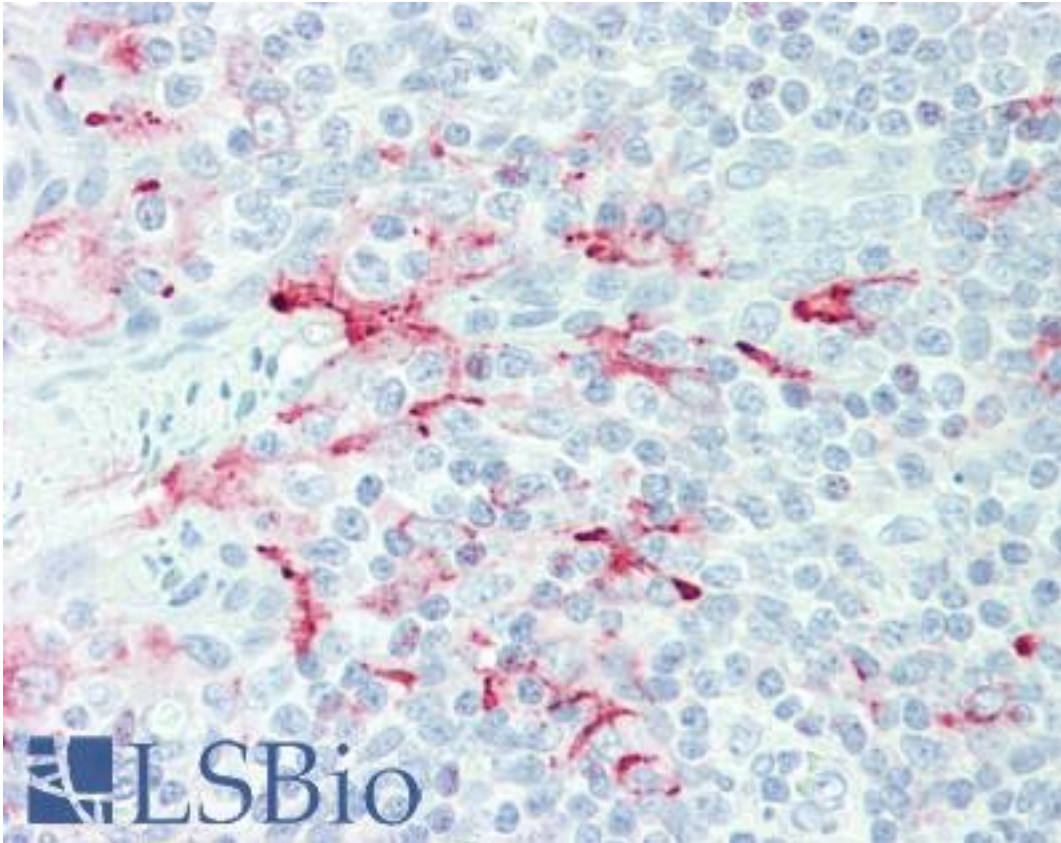


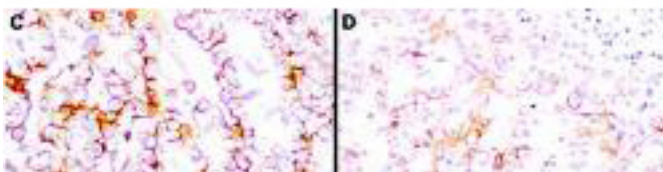
MSLN / Mesothelin Mouse anti-Human Monoclonal (Extracellular Domain) (MN-1) Antibody - LS-B10593 - LSBio	
CatalogID:	LS-B10593
Validation:	This antibody replaces catalog number LS-C154008. It has been validated for use in the following assays: IHC-P.
Target:	mesothelin (MSLN)
Synonyms:	MSLN Antibody, CAK1 antigen Antibody, MPF Antibody, SMRP Antibody, Mesothelin Antibody, CAK1 Antibody
Host	MSLN antibody was produced in Mouse
Clonality:	Monoclonal
Isotype:	IgG
Clone Name:	MN-1
Immunogen Species:	MSLN / Mesothelin antibody was raised against Human
Antigen Type:	Recombinant protein
Immunogen:	MSLN / Mesothelin antibody was raised against this antibody was produced in mice by repeated immunizations with a recombinant protein corresponding to the extracellular domain of human mesothelin.
Specificity:	Cross reactivity with homologues from other sources has not been tested.
Epitope:	Extracellular Domain
Reactivity:	Human
Purification:	Protein A purified
Presentation:	0.02 M potassium phosphate, 0.15 M sodium chloride, pH 7.2, 0.01% sodium azide, sterile filtered
Recommended Storage:	Short term 4°C, long term aliquot and store at -20°C, avoid freeze thaw cycles.
Usage Summary:	This antibody has been tested for use in immunohistochemistry and western blotting. Specific conditions for reactivity should be optimized by the end user. Expect a band approximately 40 kD in size corresponding to mature mesothelin by western blotting in the appropriate cell lysate or extract. For immunohistochemistry, archival PEFF human tissues were deparaffinized followed by hydration. Antigen-retrieval is recommended. Block tissues with 1% BSA in PBS for 30 min at 23° C. Antibodies are diluted in 1% BSA and reacted with tissue for 60 min at room temperature.
Uses:	IHC - Paraffin (15 µg/ml), Western blot (1:1000), ELISA (1:10000 - 1:50000) (Optimal dilution to be determined by the researcher)
Size:	50 µg

Immunohistochemistry Image:



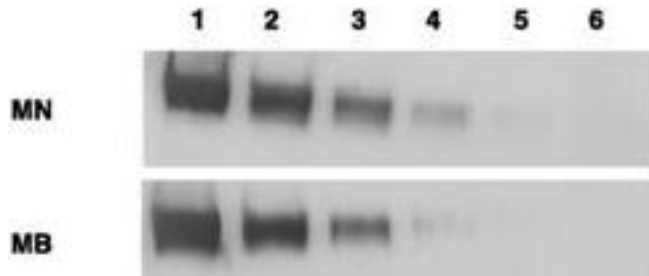
Human Tonsil: Formalin-Fixed, Paraffin-Embedded (FFPE)

Immunohistochemistry Image:



Anti-Mesothelin Antibodies - Immunohistochemistry. Immunohistochemistry using anti-mesothelin antibodies to detect mesothelin in PEFF human tissue sections treated by antigen retrieval methods. Anti-mesothelin primary antibodies were used to label these sections as follows: C, MAb MB; and D, MAb MN. Reprinted with permission from Clin. Cancer Res. 11(16):5840-6.

Western Blot Image:



Anti-Mesothelin Antibodies - Immunohistochemistry. Immunohistochemistry using anti-mesothelin antibodies to detect mesothelin in PEFF human tissue sections treated by antigen retrieval methods. Anti-mesothelin primary antibodies were used to label these sections as follows: C, MAb MB; and D, MAb MN. Reprinted with permission from Clin. Cancer Res. 11(16):5840-6.

Requested From:

Japan

Laboratory Reagent For In Vitro Research Use Only

Not for resale without prior written consent from LifeSpan BioSciences, Inc.

Created on 9/23/2014

© 2014 LifeSpan BioSciences