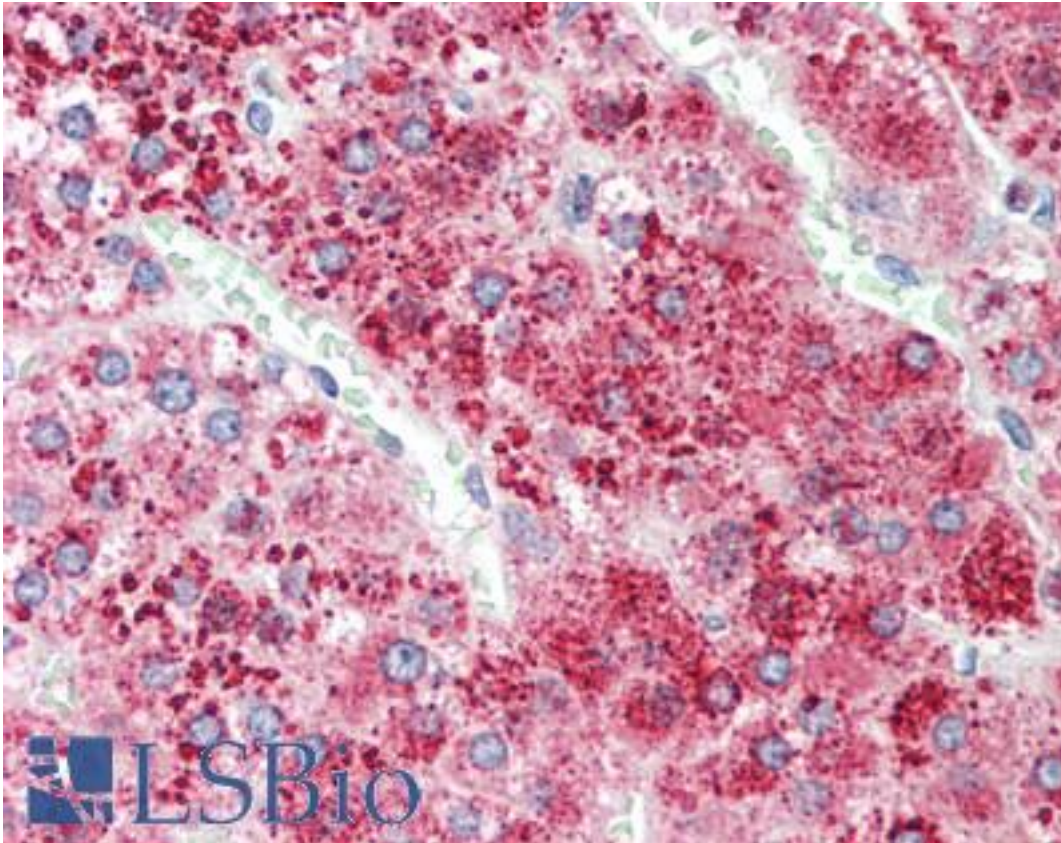


APOD / Apolipoprotein D Goat anti-Human Polyclonal (aa70-80) Antibody - LS-B10588 - LSBio

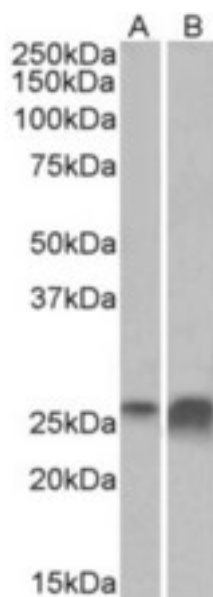
CatalogID:	LS-B10588
Validation:	This antibody replaces catalog number LS-C204967. It has been validated for use in the following assays: IHC-P.
Target:	apolipoprotein D (APOD)
Synonyms:	APOD Antibody, Apo-D Antibody, Apolipoprotein D Antibody
Host	APOD antibody was produced in Goat
Clonality:	Polyclonal
Immunogen Species:	APOD / Apolipoprotein D antibody was raised against Human
Antigen Type:	Synthetic peptide
Immunogen:	APOD / Apolipoprotein D antibody was raised against synthetic peptide C-ENGKIKVLNQE from an internal region of human APOD / Apolipoprotein D (NP_001638.1). Percent identity by BLAST analysis: Human, Chimpanzee, Gorilla, Gibbon, Monkey (100%); Rabbit, Platypus (91%); Rat, Ferret, Bat, Elephant, Panda, Guinea pig, Castor bean, Amoeba (82%).
Specificity:	Human APOD / Apolipoprotein D
Epitope:	aa70-80
Reactivity:	Human, Chimpanzee, Gibbon, Monkey
Purification:	Immunoaffinity purified
Presentation:	Tris saline, pH 7.3, 0.5% BSA, 0.02% sodium azide
Recommended Storage:	Store at -20°C. Minimize freezing and thawing.
Usage Summary:	Peptide ELISA: antibody detection limit dilution 1:64000. Western blot: Approx 26kD band observed in Human Liver and Kidney lysates (calculated MW of 21.3kD according to NP_001638.1). The observed molecular weight corresponds to the glycosylated form. Recommended concentration: 0.3-1 ug/ml.
Uses:	IHC - Paraffin (5 µg/ml), Western blot (0.3 - 1 µg/ml), ELISA (1:64000) (Optimal dilution to be determined by the researcher)
Size:	50 µg

Immunohistochemistry Image:



Human Adrenal: Formalin-Fixed, Paraffin-Embedded (FFPE)

Western Blot Image:



APOD antibody (0.3 ug/ml) staining of Human Kidney (A) and Liver (B) lysates (35 ug protein in RIPA buffer). Primary incubation was 1 hour. Detected by chemiluminescence.

Requested From:

Japan

Laboratory Reagent For In Vitro Research Use Only

Not for resale without prior written consent from LifeSpan BioSciences, Inc.

Created on 9/23/2014

© 2014 LifeSpan BioSciences