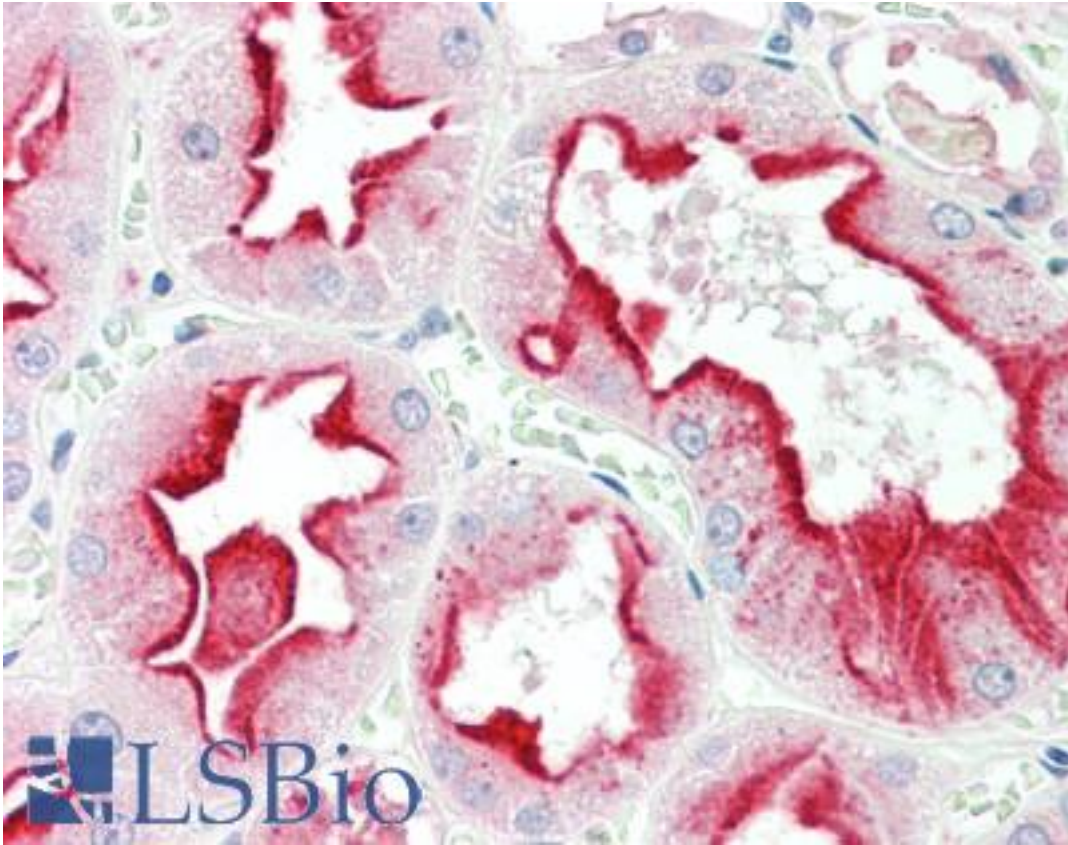


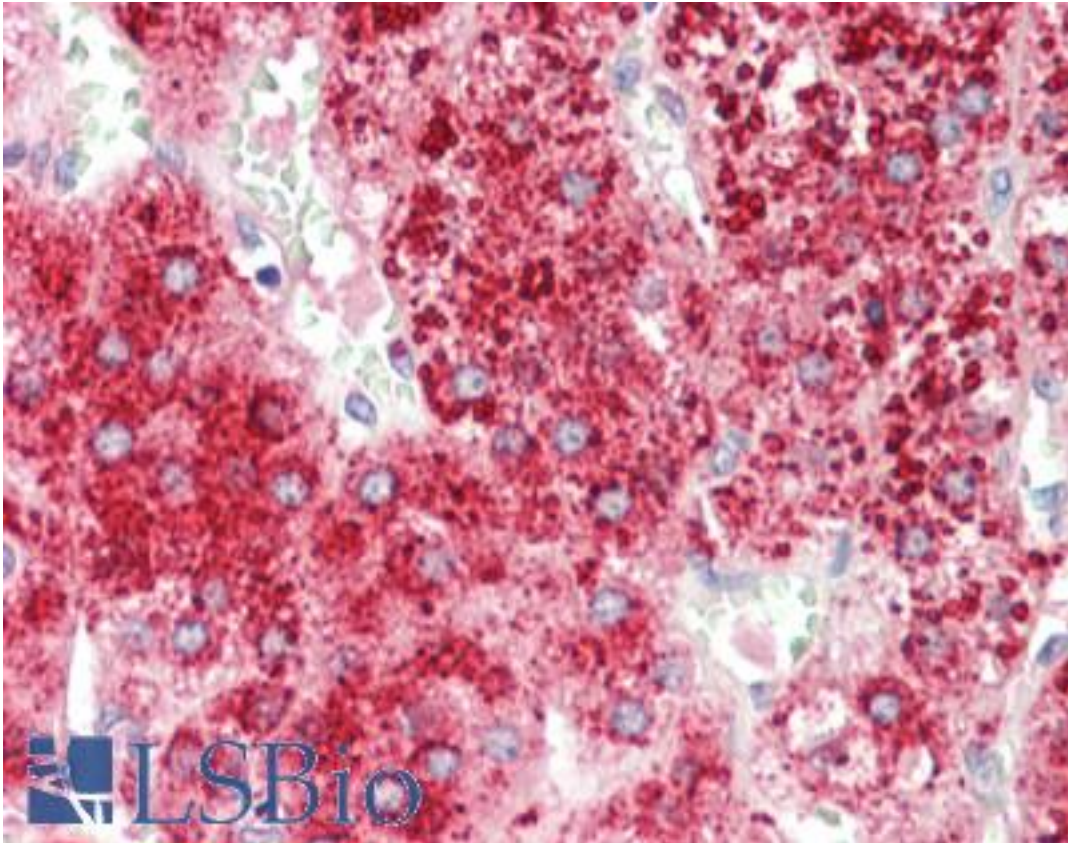
APOD / Apolipoprotein D Goat anti-Human Polyclonal (aa48-61) Antibody - LS-B10587 - LSBio	
<b>CatalogID:</b>	LS-B10587
<b>Validation:</b>	This antibody replaces catalog number LS-C204968. It has been validated for use in the following assays: IHC-P.
<b>Target:</b>	apolipoprotein D (APOD)
<b>Synonyms:</b>	APOD Antibody, Apo-D Antibody, Apolipoprotein D Antibody
<b>Host</b>	APOD antibody was produced in Goat
<b>Clonality:</b>	Polyclonal
<b>Immunogen Species:</b>	APOD / Apolipoprotein D antibody was raised against Human
<b>Antigen Type:</b>	Synthetic peptide
<b>Immunogen:</b>	APOD / Apolipoprotein D antibody was raised against synthetic peptide EIEKIPTTFENGRC from an internal region of human APOD / Apolipoprotein D (NP_001638.1). Percent identity by BLAST analysis: Human, Chimpanzee, Gorilla (100%); Gibbon, Monkey (93%); Mouse, Rat (71%).
<b>Specificity:</b>	Human APOD / Apolipoprotein D
<b>Epitope:</b>	aa48-61
<b>Reactivity:</b>	Human, Chimpanzee
<b>Purification:</b>	Immunoaffinity purified
<b>Presentation:</b>	Tris saline, pH 7.3, 0.5% BSA, 0.02% sodium azide
<b>Recommended Storage:</b>	Store at -20°C. Minimize freezing and thawing.
<b>Usage Summary:</b>	Peptide ELISA: antibody detection limit dilution 1:32000. Western blot: Approx 25kD band observed in Human Liver and Kidney lysates (calculated MW of 21.3kD according to NP_001638.1). The observed molecular weight corresponds to the glycosylated form. Recommended concentration: 0.3-1 ug/ml.
<b>Uses:</b>	IHC - Paraffin (5 µg/ml), Western blot (0.3 - 1 µg/ml), ELISA (1:32000) (Optimal dilution to be determined by the researcher)
<b>Size:</b>	50 µg

**Immunohistochemistry Image:**



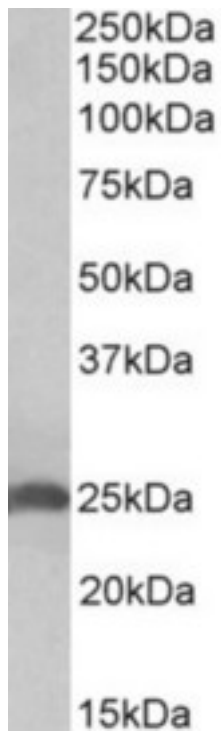
Human Kidney: Formalin-Fixed, Paraffin-Embedded (FFPE)

**Immunohistochemistry Image:**



Human Adrenal: Formalin-Fixed, Paraffin-Embedded (FFPE)

**Western Blot Image:**



APOD antibody (0.3 ug/ml) staining of Human Liver lysate (35 ug protein in RIPA buffer).  
Primary incubation was 1 hour. Detected by chemiluminescence.

**Requested From:**

Japan

Laboratory Reagent For In Vitro Research Use Only

Not for resale without prior written consent from LifeSpan BioSciences, Inc.

Created on 9/23/2014

© 2014 LifeSpan BioSciences