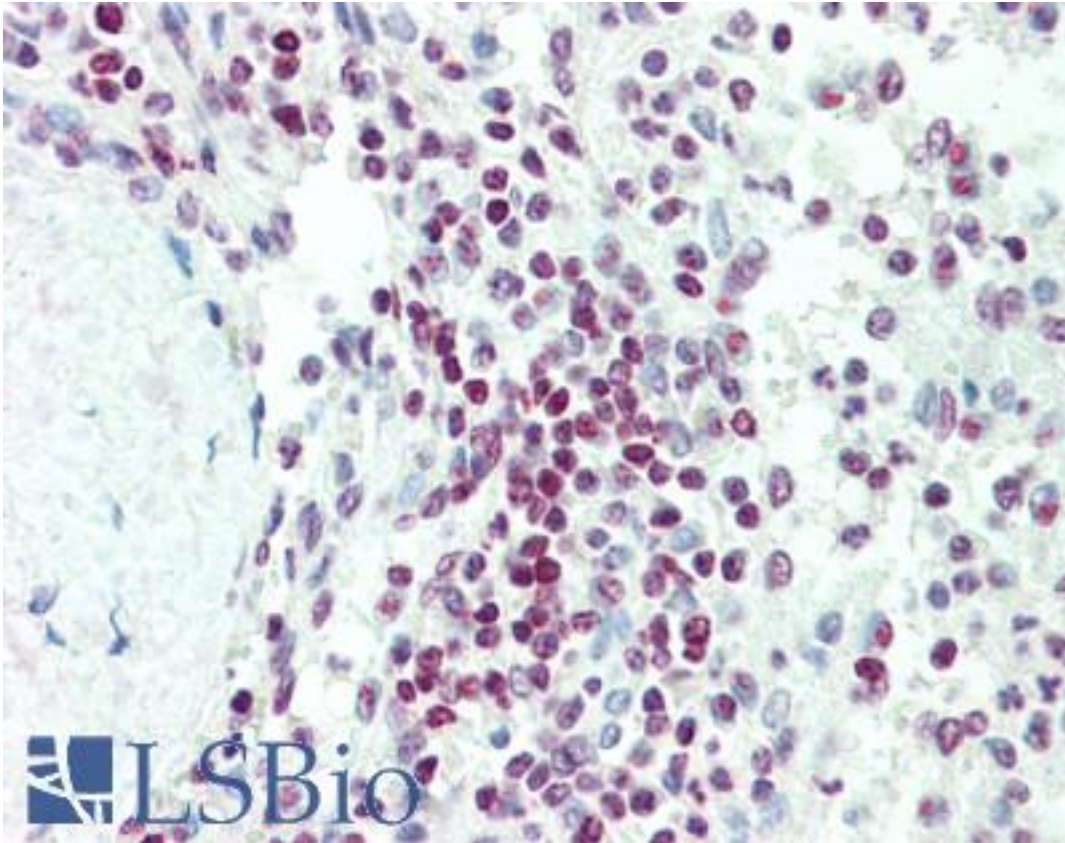


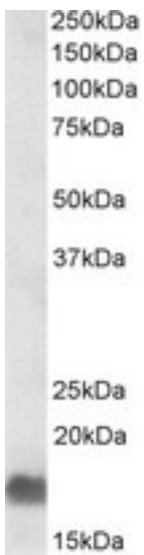
EDF1 / MBF1 Goat anti-Human Polyclonal (aa49-63) Antibody - LS-B10582 - LSBio	
CatalogID:	LS-B10582
Validation:	This antibody replaces catalog number LS-C205007. It has been validated for use in the following assays: IHC-P.
Target:	endothelial differentiation-related factor 1 (EDF1)
Synonyms:	EDF1 Antibody, EDF-1 Antibody, Multiprotein bridging factor 1 Antibody, Multiprotein-bridging factor 1 Antibody, MBF1 Antibody
Host	EDF1 antibody was produced in Goat
Clonality:	Polyclonal
Immunogen Species:	EDF1 / MBF1 antibody was raised against Human
Antigen Type:	Synthetic peptide
Immunogen:	EDF1 / MBF1 antibody was raised against synthetic peptide C-NKQHSITKNTAKLDR from an internal region of human EDF1 / MBF1 (NP_003783.1; NP_694880.1). Percent identity by BLAST analysis: Human, Chimpanzee, Gorilla, Gibbon, Monkey, Mouse, Rat, Bovine, Elephant, Panda, Horse, Pig, Guinea pig, Platypus, Lizard (100%); Ferret, Turkey, Zebra finch, Chicken, Xenopus, Trout, Pike, Catfish, Salmon, Smelt (93%); Zebrafish, Drosophila (87%).
Specificity:	Human EDF1 / MBF1. This antibody is expected to recognize both reported isoforms (NP_003783.1; NP_694880.1).
Epitope:	aa49-63
Reactivity:	Human, Chimpanzee, Gibbon, Monkey, Mouse, Rat, Bovine, Guinea pig, Horse, Pig
Purification:	Immunoaffinity purified
Presentation:	Tris saline, pH 7.3, 0.5% BSA, 0.02% sodium azide
Recommended Storage:	Store at -20°C. Minimize freezing and thawing.
Usage Summary:	Peptide ELISA: antibody detection limit dilution 1:128000. Western blot: Approx 17kD band observed in lysates of cell line A549 (calculated MW of 16.4kD according to NP_003783.1). Recommended concentration: 0.3-1 ug/ml.
Uses:	IHC - Paraffin (5 µg/ml), Western blot (0.3 - 1 µg/ml), ELISA (1:128000) (Optimal dilution to be determined by the researcher)
Size:	50 µg

Immunohistochemistry Image:



Human Spleen: Formalin-Fixed, Paraffin-Embedded (FFPE)

Western Blot Image:



EDF1 antibody (0.3 ug/ml) staining of A549 lysate (35 ug protein in RIPA buffer). Primary incubation was 1 hour. Detected by chemiluminescence.

Requested From:

Japan

Laboratory Reagent For In Vitro Research Use Only

Not for resale without prior written consent from LifeSpan BioSciences, Inc.

Created on 9/23/2014

© 2014 LifeSpan BioSciences