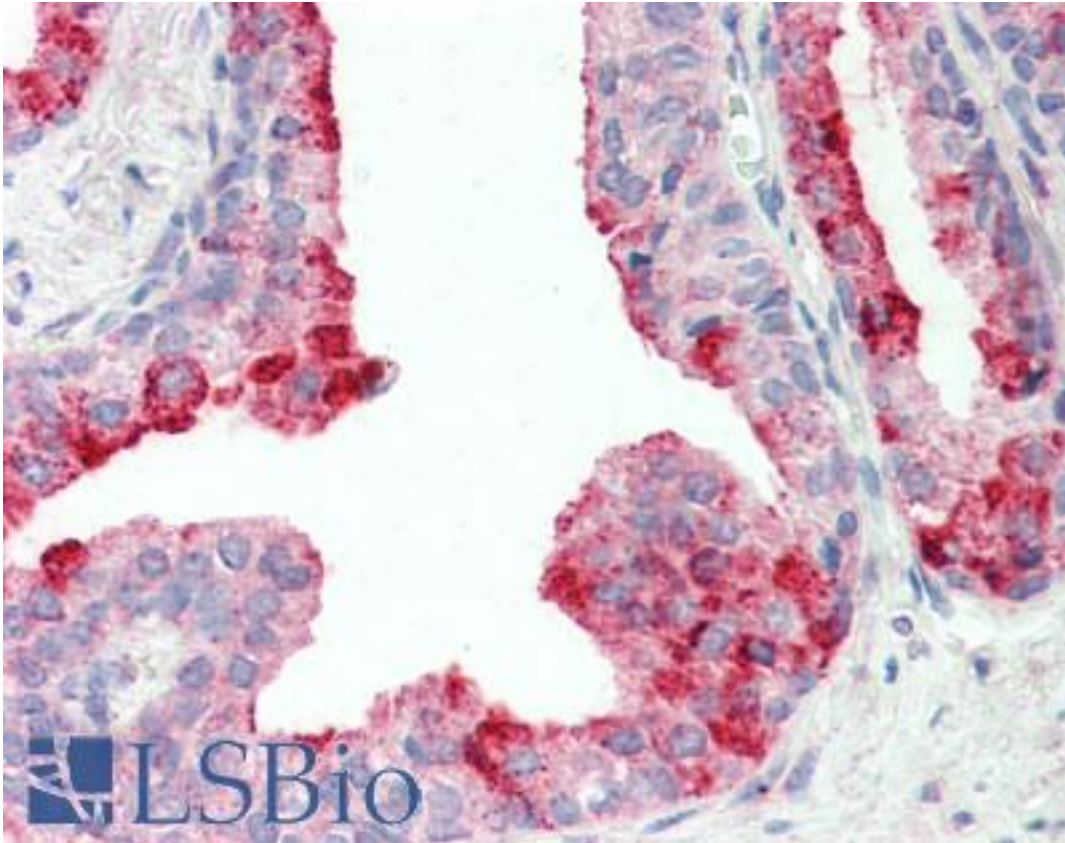


CUTA Goat anti-Human Polyclonal (C-Terminus) Antibody - LS-B10580 - LSBio	
CatalogID:	LS-B10580
Validation:	This antibody replaces catalog number LS-C205001. It has been validated for use in the following assays: IHC-P.
Target:	cutA divalent cation tolerance homolog (E. coli)
Synonyms:	CUTA Antibody, ACHAP Antibody, C6orf82 Antibody, Protein CutA Antibody
Host	CUTA antibody was produced in Goat
Clonality:	Polyclonal
Immunogen Species:	CUTA antibody was raised against Human
Antigen Type:	Synthetic peptide
Immunogen:	CUTA antibody was raised against synthetic peptide C-QVTESVSDSIT from the C-terminus of human CUTA (NP_001014433.1; NP_057005.1; NP_001014840.1). Percent identity by BLAST analysis: Human, Gorilla (100%); Chimpanzee (91%); Monkey, Ferret, Elephant, Arabidopsis (82%); Mouse (73%).
Specificity:	Human CUTA. This antibody is expected to recognize all reported isoforms (NP_001014433.1; NP_057005.1; NP_001014840.1). Reported variants represent identical protein: NP_001014837.1, NP_001014838.1, NP_057005.1.
Epitope:	C-Terminus
Reactivity:	Human
Purification:	Immunoaffinity purified
Presentation:	Tris saline, pH 7.3, 0.5% BSA, 0.02% sodium azide
Recommended Storage:	Store at -20°C. Minimize freezing and thawing.
Usage Summary:	Peptide ELISA: antibody detection limit dilution 1:64000. Western blot: Approx 16kD band observed in lysates of cell line Kelly (calculated MW of 16.8kD according to NP_057005.1). Recommended concentration: 1-3 ug/ml.
Uses:	IHC - Paraffin (5 µg/ml), Western blot (1 - 3 µg/ml), ELISA (1:64000) (Optimal dilution to be determined by the researcher)
Size:	50 µg
Concentration:	0.5 mg/ml

Immunohistochemistry Image:



Human Prostate: Formalin-Fixed, Paraffin-Embedded (FFPE)

Western Blot Image:



CUTA antibody (1 ug/ml) staining of Kelly lysate (35 ug protein in RIPA buffer). Primary incubation was 1 hour. Detected by chemiluminescence.

Requested From:

Japan

Laboratory Reagent For In Vitro Research Use Only

Not for resale without prior written consent from LifeSpan BioSciences, Inc.

Created on 9/23/2014

© 2014 LifeSpan BioSciences