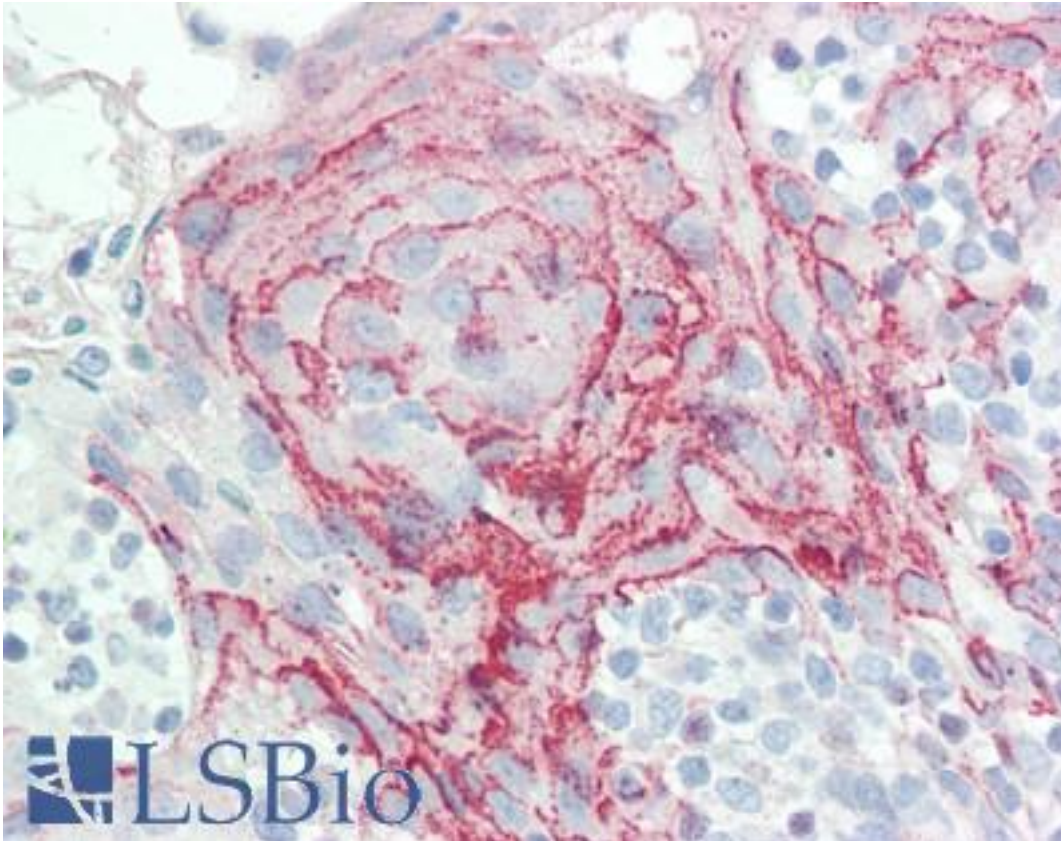


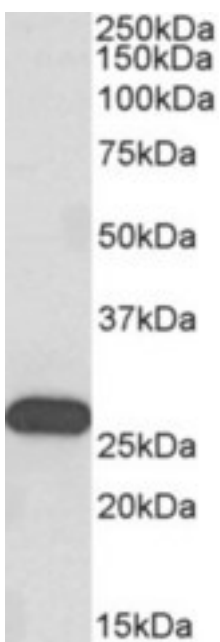
HOXC6 Goat anti-Human Polyclonal (aa22-36) Antibody - LS-B10577 - LSBio	
<b>CatalogID:</b>	LS-B10577
<b>Validation:</b>	This antibody replaces catalog number LS-C205026. It has been validated for use in the following assays: IHC-P.
<b>Target:</b>	homeobox C6 (HOXC6)
<b>Synonyms:</b>	HOXC6 Antibody, CP25 Antibody, Homeobox C6 Antibody, Homeobox protein HHO.C8 Antibody, Homeobox protein Hox-3C Antibody, Homeo box 3C Antibody, Homeo box C6 Antibody, Homeobox protein CP25 Antibody, HHO.C8 Antibody, Homeo box C8 protein Antibody, Homeobox protein Hox-C6 Antibody, HOX3 Antibody, HOX3C Antibody
<b>Host</b>	HOXC6 antibody was produced in Goat
<b>Clonality:</b>	Polyclonal
<b>Immunogen Species:</b>	HOXC6 antibody was raised against Human
<b>Antigen Type:</b>	Synthetic peptide
<b>Immunogen:</b>	HOXC6 antibody was raised against synthetic peptide C-PNVALNSTAYDPVRH from an internal region (near N-terminus) of human HOXC6 (NP_004494.1). Percent identity by BLAST analysis: Human, Chimpanzee, Gorilla, Monkey, Mouse, Rat, Ferret, Bovine, Bat, Elephant, Panda, Rabbit, Horse, Pig, Guinea pig, Turkey, Chicken, Lizard, Xenopus (100%); Platypus, Trout (93%); Zebra finch, Salmon (87%); Medaka, Pufferfish (80%).
<b>Specificity:</b>	Human HOXC6. This antibody is expected to recognize isoform 1 (NP_004494.1) only.
<b>Epitope:</b>	aa22-36
<b>Reactivity:</b>	Human, Chimpanzee, Monkey, Mouse, Rat, Bat, Bovine, Guinea pig, Horse, Pig, Rabbit, Chicken, Xenopus
<b>Purification:</b>	Immunoaffinity purified
<b>Presentation:</b>	Tris saline, pH 7.3, 0.5% BSA, 0.02% sodium azide
<b>Recommended Storage:</b>	Store at -20°C. Minimize freezing and thawing.
<b>Usage Summary:</b>	Peptide ELISA: antibody detection limit dilution 1:128000. Western blot: Approx 26kD band observed in Human Brain (Olfactory bulb) lysates (calculated MW of 26.9kD according to NP_004494.1). Recommended concentration: 0.3-1 ug/ml.
<b>Uses:</b>	IHC - Paraffin (5 µg/ml), Western blot (0.3 - 1 µg/ml), ELISA (1:128000) (Optimal dilution to be determined by the researcher)
<b>Size:</b>	50 µg

**Immunohistochemistry Image:**



Human Tonsil: Formalin-Fixed, Paraffin-Embedded (FFPE)

**Western Blot Image:**



HOXC6 antibody (0.3 ug/ml) staining of Human Olfactory bulb lysate (35 ug protein in RIPA buffer). Primary incubation was 1 hour. Detected by chemiluminescence.

Requested From:

Japan

Laboratory Reagent For In Vitro Research Use Only

Not for resale without prior written consent from LifeSpan BioSciences, Inc.

Created on 9/23/2014

© 2014 LifeSpan BioSciences