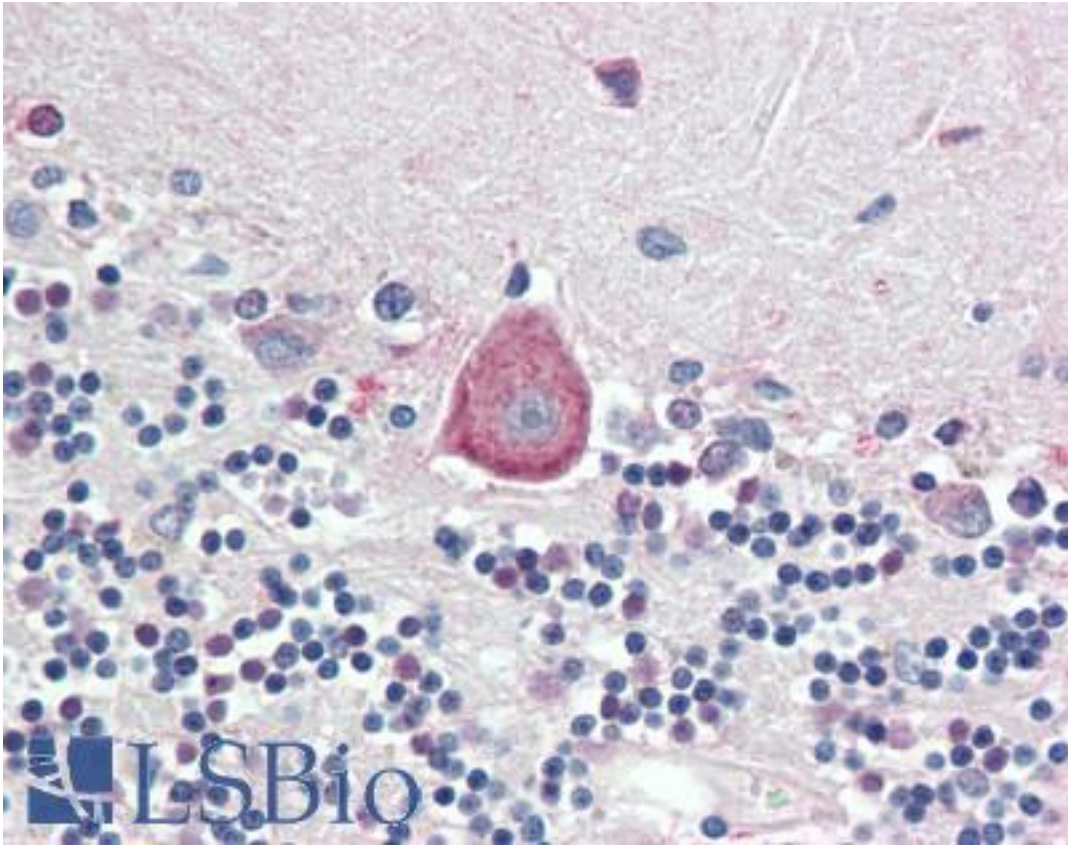


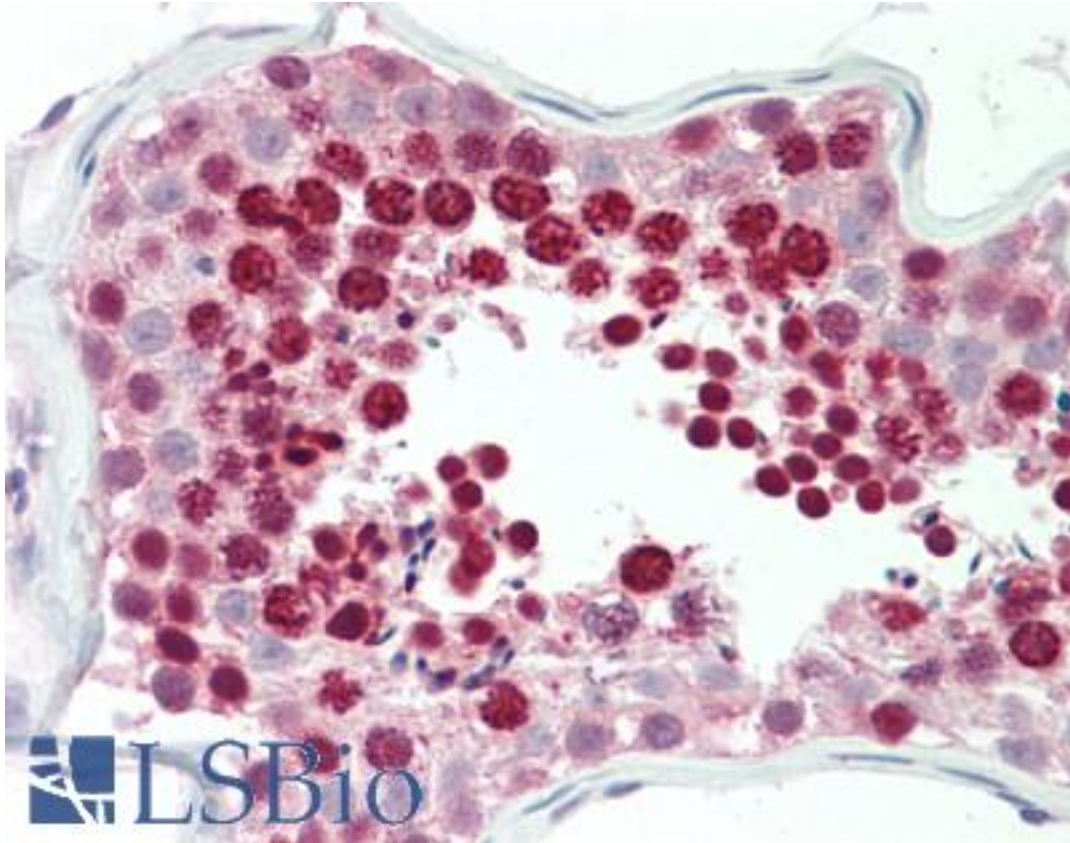
HOXA10 Goat anti-Human Polyclonal (aa152-165) Antibody - LS-B10575 - LSBio	
CatalogID:	LS-B10575
Validation:	This antibody replaces catalog number LS-C205022. It has been validated for use in the following assays: IHC-P.
Target:	homeobox A10 (HOXA10)
Synonyms:	HOXA10 Antibody, Homeobox A10 Antibody, Homeobox protein Hox-A10 Antibody, Homeobox protein Hox-1.8 Antibody, Homeobox protein HOXA10 Antibody, Homeobox protein 1H Antibody, Homeobox protein Hox-1H Antibody, HOX1 Antibody, HOX1H Antibody, Homeobox A10 Antibody, HOX1.8 Antibody
Host	HOXA10 antibody was produced in Goat
Clonality:	Polyclonal
Immunogen Species:	HOXA10 antibody was raised against Human
Antigen Type:	Synthetic peptide
Immunogen:	HOXA10 antibody was raised against synthetic peptide PQATSCSFAQNIKE from an internal region of human HOXA10 (NP_061824.3). Percent identity by BLAST analysis: Human, Chimpanzee, Gorilla, Mouse, Rat, Ferret, Bovine, Elephant, Panda, Rabbit, Horse, Pig (100%); Monkey, Chicken, Platypus (93%).
Specificity:	Human HOXA10
Epitope:	aa152-165
Reactivity:	Human, Chimpanzee, Mouse, Rat, Bovine, Horse, Pig, Rabbit
Purification:	Immunoaffinity purified
Presentation:	Tris saline, pH 7.3, 0.5% BSA, 0.02% sodium azide
Recommended Storage:	Store at -20°C. Minimize freezing and thawing.
Usage Summary:	Peptide ELISA: antibody detection limit dilution 1:32000. Western blot: Approx 38kD band observed in Human Skeletal Muscle lysates (calculated MW of 42.4kD according to NP_061824.3. Recommended concentration: 0.2-0.6 ug/ml.
Uses:	IHC - Paraffin (5 µg/ml), Western blot (0.2 - 0.6 µg/ml), ELISA (1:32000) (Optimal dilution to be determined by the researcher)
Size:	50 µg
Concentration:	0.5 mg/ml

Immunohistochemistry Image:



Human Brain, Cerebellum: Formalin-Fixed, Paraffin-Embedded (FFPE)

Immunohistochemistry Image:



Human Testis: Formalin-Fixed, Paraffin-Embedded (FFPE)

Western Blot Image:



HOXA10 antibody (0.2 ug/ml) staining of Human Skeletal Muscle lysate (35 ug protein in RIPA buffer). Primary incubation was 1 hour. Detected by chemiluminescence.

Requested From:

Japan

Laboratory Reagent For In Vitro Research Use Only

Not for resale without prior written consent from LifeSpan BioSciences, Inc.

Created on 9/23/2014

© 2014 LifeSpan BioSciences