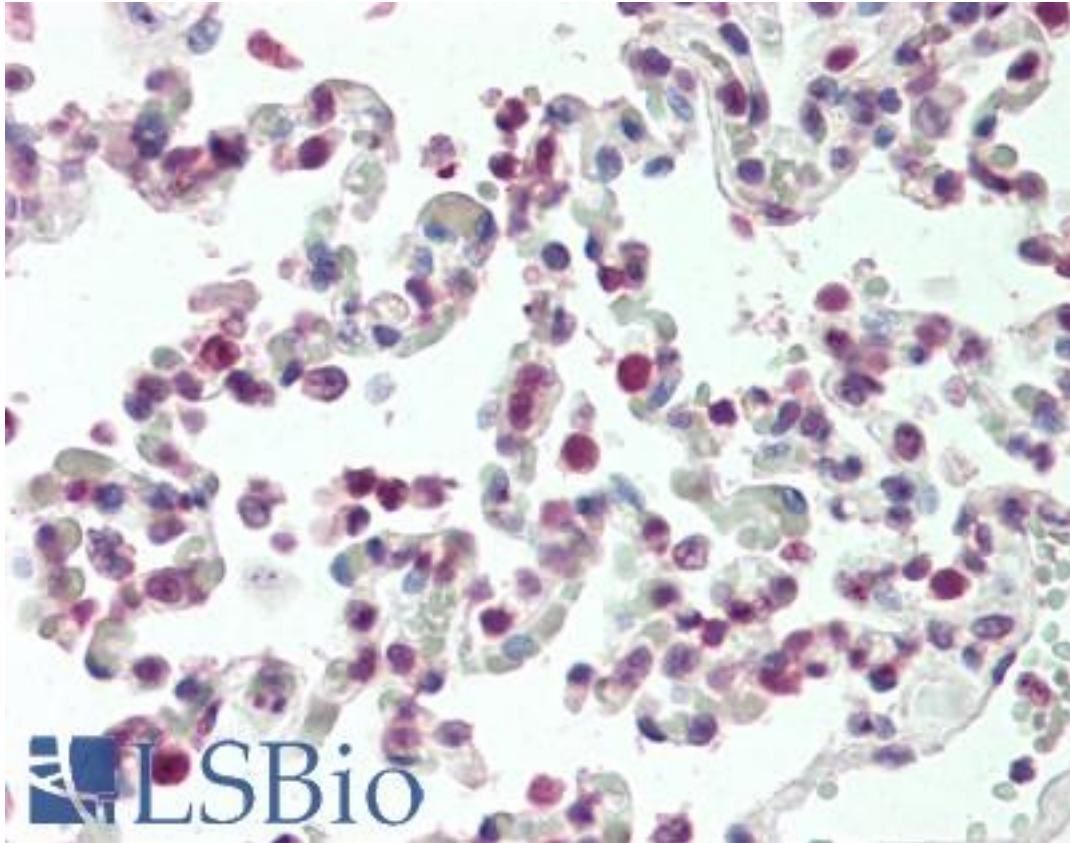


HOXB6 Goat anti-Human Polyclonal (aa102-113) Antibody - LS-B10574 - LSBio

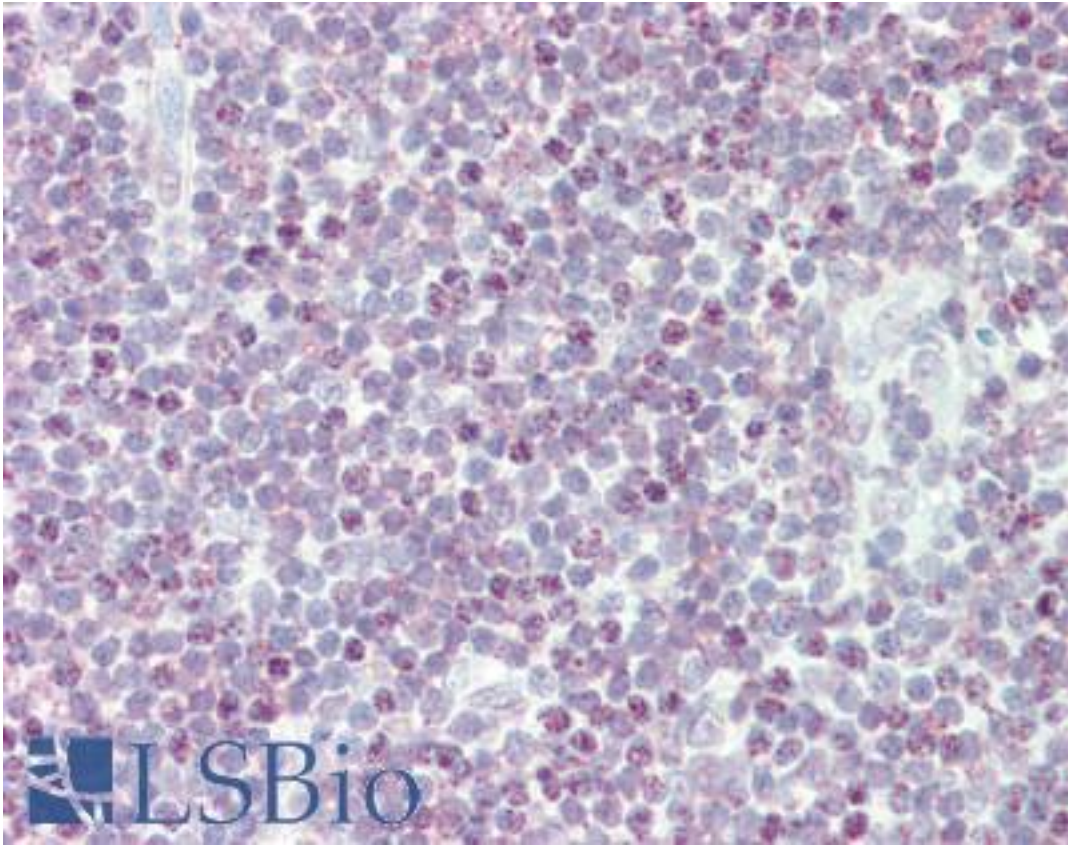
CatalogID:	LS-B10574
Validation:	This antibody replaces catalog number LS-C205023. It has been validated for use in the following assays: IHC-P.
Target:	homeobox B6 (HOXB6)
Synonyms:	HOXB6 Antibody, Hox-2.2 Antibody, HOX2B Antibody, Homeo box B6 Antibody, Homeobox protein Hox-2.2 Antibody, HU-2 Antibody, Homeobox protein Hox-2B Antibody, Homeobox protein Hox-B6 Antibody, Hox-b6 Antibody, Homeo box 2B Antibody, Homeobox B6 Antibody, Homeobox protein Hu-2 Antibody, HOX2 Antibody
Host	HOXB6 antibody was produced in Goat
Clonality:	Polyclonal
Immunogen Species:	HOXB6 antibody was raised against Human
Antigen Type:	Synthetic peptide
Immunogen:	HOXB6 antibody was raised against synthetic peptide EPRKSDCAQDKS from an internal region of human HOXB6 (NP_061825.2). Percent identity by BLAST analysis: Human, Chimpanzee, Gorilla, Gibbon, Monkey, Mouse, Rat, Ferret, Bat, Elephant, Panda, Rabbit, Horse, Pig (100%); Guinea pig (92%); Chicken (83%).
Specificity:	Human HOXB6
Epitope:	aa102-113
Reactivity:	Human, Chimpanzee, Gibbon, Monkey, Mouse, Rat, Bat, Horse, Pig, Rabbit
Purification:	Immunoaffinity purified
Presentation:	Tris saline, pH 7.3, 0.5% BSA, 0.02% sodium azide
Recommended Storage:	Store at -20°C. Minimize freezing and thawing.
Usage Summary:	Peptide ELISA: antibody detection limit dilution 1:1000. Western blot: Approx 26kD band observed in lysates of cell lines HEK293, CACO-2 and MRC5 PD19 (calculated MW of 25.4kD according to NP_061825.2). Recommended concentration: 1-3 ug/ml.
Uses:	IHC - Paraffin (5 µg/ml), Western blot (1 - 3 µg/ml), ELISA (1:1000) (Optimal dilution to be determined by the researcher)
Size:	50 µg

Immunohistochemistry Image:



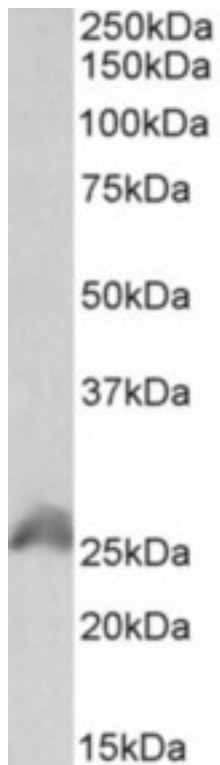
Human Lung: Formalin-Fixed, Paraffin-Embedded (FFPE)

Immunohistochemistry Image:



Human Tonsil: Formalin-Fixed, Paraffin-Embedded (FFPE)

Western Blot Image:



HOXB6 antibody (1 ug/ml) staining of HEK293 lysate (35 ug protein in RIPA buffer). Primary incubation was 1 hour. Detected by chemiluminescence.

Requested From:

Japan

Laboratory Reagent For In Vitro Research Use Only

Not for resale without prior written consent from LifeSpan BioSciences, Inc.

Created on 9/23/2014

© 2014 LifeSpan BioSciences