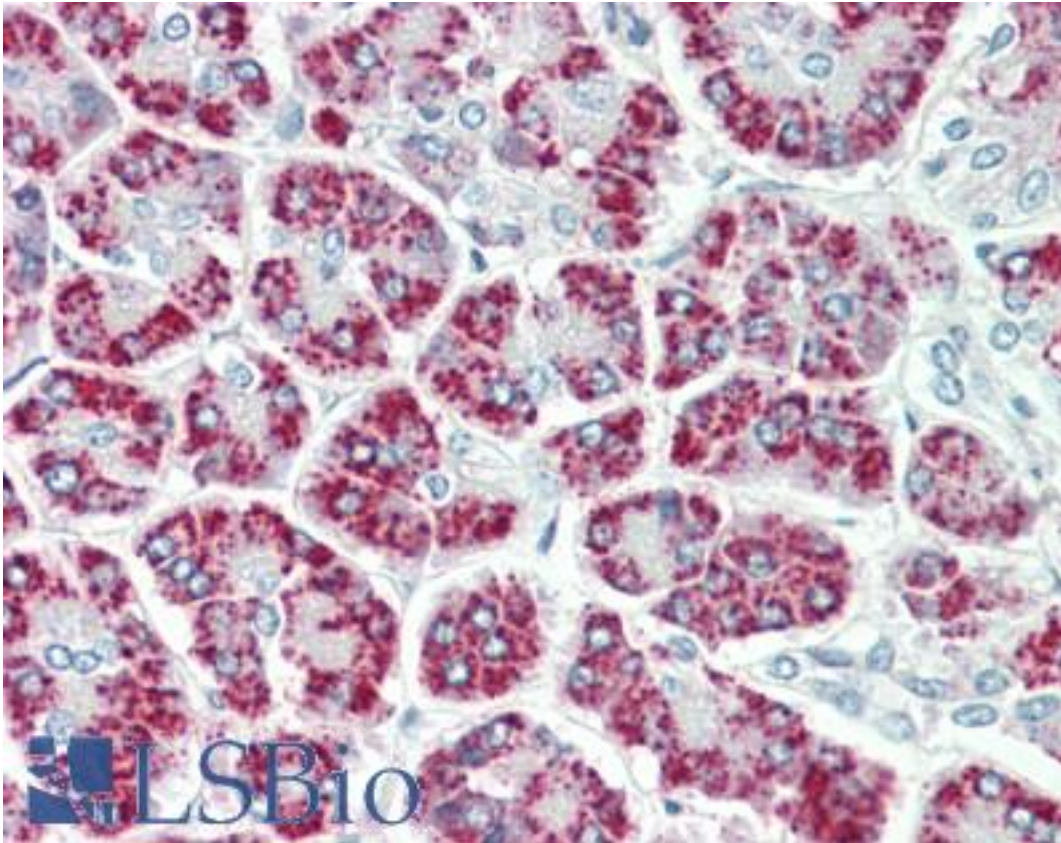


EEF1E1 / AIMP3 / p18 Goat anti-Human Polyclonal (aa17-29) Antibody - LS-B10573 - LSBio	
<b>CatalogID:</b>	LS-B10573
<b>Validation:</b>	This antibody replaces catalog number LS-C205008. It has been validated for use in the following assays: IHC-P.
<b>Target:</b>	eukaryotic translation elongation factor 1 epsilon 1 (EEF1E1)
<b>Synonyms:</b>	EEF1E1 Antibody, AIMP3 Antibody, Elongation factor p18 Antibody, p18 Antibody
<b>Host</b>	EEF1E1 antibody was produced in Goat
<b>Clonality:</b>	Polyclonal
<b>Immunogen Species:</b>	EEF1E1 / AIMP3 / p18 antibody was raised against Human
<b>Antigen Type:</b>	Synthetic peptide
<b>Immunogen:</b>	EEF1E1 / AIMP3 / p18 antibody was raised against synthetic peptide C-SKGNKYSAQGERQ from an internal region (near N-terminus) of human EEF1E1 / AIMP3 / p18 (NP_004271.1; NP_001129122.1). Percent identity by BLAST analysis: Human, Chimpanzee, Gibbon, Monkey, Ferret, Bovine, Bat, Panda, Rabbit, Horse, Pig, Guinea pig (100%); Gorilla, Elephant (92%); Mouse, Rat, Platypus (85%).
<b>Specificity:</b>	Human EEF1E1 / AIMP3 / p18. This antibody is expected to recognize both reported isoforms (NP_004271.1; NP_001129122.1).
<b>Epitope:</b>	aa17-29
<b>Reactivity:</b>	Human, Chimpanzee, Gibbon, Monkey, Bat, Bovine, Guinea pig, Horse, Pig, Rabbit
<b>Purification:</b>	Immunoaffinity purified
<b>Presentation:</b>	Tris saline, pH 7.3, 0.5% BSA, 0.02% sodium azide
<b>Recommended Storage:</b>	Store at -20°C. Minimize freezing and thawing.
<b>Usage Summary:</b>	Peptide ELISA: antibody detection limit dilution 1:128000. Western blot: Approx 19kD band observed in lysates of cell line HepG2 and K562 (calculated MW of 19.8kD according to NP_004271.1). Recommended concentration: 0.1-0.3 ug/ml.
<b>Uses:</b>	IHC - Paraffin (5 µg/ml), Western blot (0.1 - 0.3 µg/ml), ELISA (1:128000) (Optimal dilution to be determined by the researcher)
<b>Size:</b>	50 µg

**Immunohistochemistry Image:**



Human Pancreas: Formalin-Fixed, Paraffin-Embedded (FFPE)

**Western Blot Image:**



EEF1E1 antibody (0.1 ug/ml) staining of K562 lysate (35 ug protein in RIPA buffer). Primary incubation was 1 hour. Detected by chemiluminescence.

**Requested From:**

Japan

Laboratory Reagent For In Vitro Research Use Only

Not for resale without prior written consent from LifeSpan BioSciences, Inc.

Created on 9/23/2014

© 2014 LifeSpan BioSciences