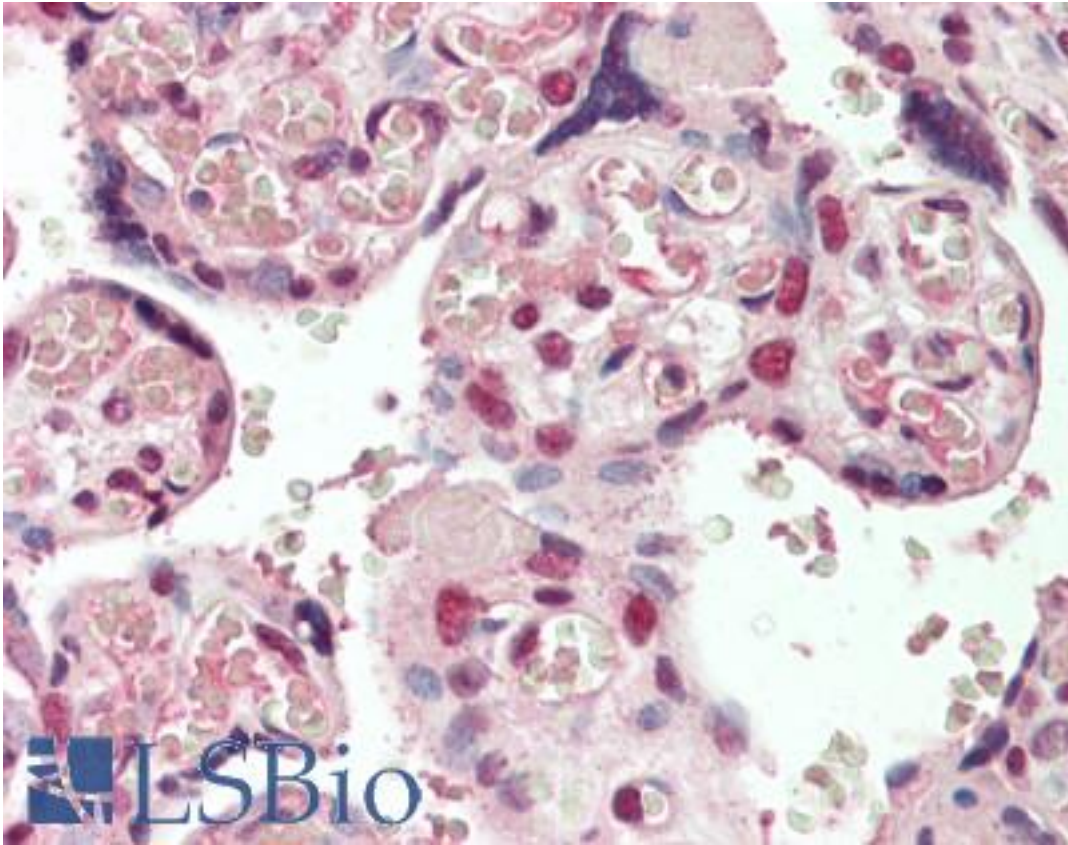


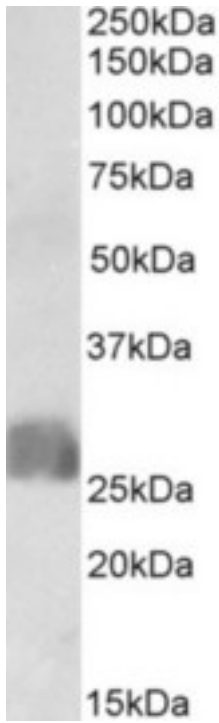
CREB3L2 / BBF2H7 Goat anti-Human Polyclonal (aa15-28) Antibody - LS-B10572 - LSBio	
<b>CatalogID:</b>	LS-B10572
<b>Validation:</b>	This antibody replaces catalog number LS-C204999. It has been validated for use in the following assays: IHC-P.
<b>Target:</b>	cAMP responsive element binding protein 3-like 2 (CREB3L2)
<b>Synonyms:</b>	CREB3L2 Antibody, Basic transcription factor 2 Antibody, FUS/BBF2H7 protein Antibody, TCAG_1951439 Antibody, B-ZIB transcription factor Antibody, BBF2H7 Antibody
<b>Host</b>	CREB3L2 antibody was produced in Goat
<b>Clonality:</b>	Polyclonal
<b>Immunogen Species:</b>	CREB3L2 / BBF2H7 antibody was raised against Human
<b>Antigen Type:</b>	Synthetic peptide
<b>Immunogen:</b>	CREB3L2 / BBF2H7 antibody was raised against synthetic peptide DRKLSELPDGE-C from the N-terminus of human CREB3L2 / BBF2H7 (NP_919047.2; NP_001240704.1). Percent identity by BLAST analysis: Human, Chimpanzee, Gorilla, Gibbon, Monkey, Guinea pig (100%); Elephant (93%); Mouse, Rat, Ferret, Bovine, Panda, Rabbit, Horse (86%).
<b>Specificity:</b>	Human CREB3L2 / BBF2H7. This antibody is expected to recognize both reported isoforms (NP_919047.2; NP_001240704.1).
<b>Epitope:</b>	aa15-28
<b>Reactivity:</b>	Human, Chimpanzee, Gibbon, Monkey, Guinea pig
<b>Purification:</b>	Immunoaffinity purified
<b>Presentation:</b>	Tris saline, pH 7.3, 0.5% BSA, 0.02% sodium azide
<b>Recommended Storage:</b>	Store at -20°C. Minimize freezing and thawing.
<b>Usage Summary:</b>	Peptide ELISA: antibody detection limit dilution 1:128000. Western blot: Approx 26kD band observed in Human Placenta lysates (calculated MW of 27.7kD according to NP_001240704.1). Recommended concentration: 1-3 ug/ml.
<b>Uses:</b>	IHC - Paraffin (5 µg/ml), Western blot (1 - 3 µg/ml), ELISA (1:128000) (Optimal dilution to be determined by the researcher)
<b>Size:</b>	50 µg

**Immunohistochemistry Image:**



Human Placenta: Formalin-Fixed, Paraffin-Embedded (FFPE)

**Western Blot Image:**



CREB3L2 antibody (1 ug/ml) staining of Human Placenta lysate (35 ug protein in RIPA buffer). Primary incubation was 1 hour. Detected by chemiluminescence.

**Requested From:**

Japan

Laboratory Reagent For In Vitro Research Use Only

Not for resale without prior written consent from LifeSpan BioSciences, Inc.

Created on 9/23/2014

© 2014 LifeSpan BioSciences