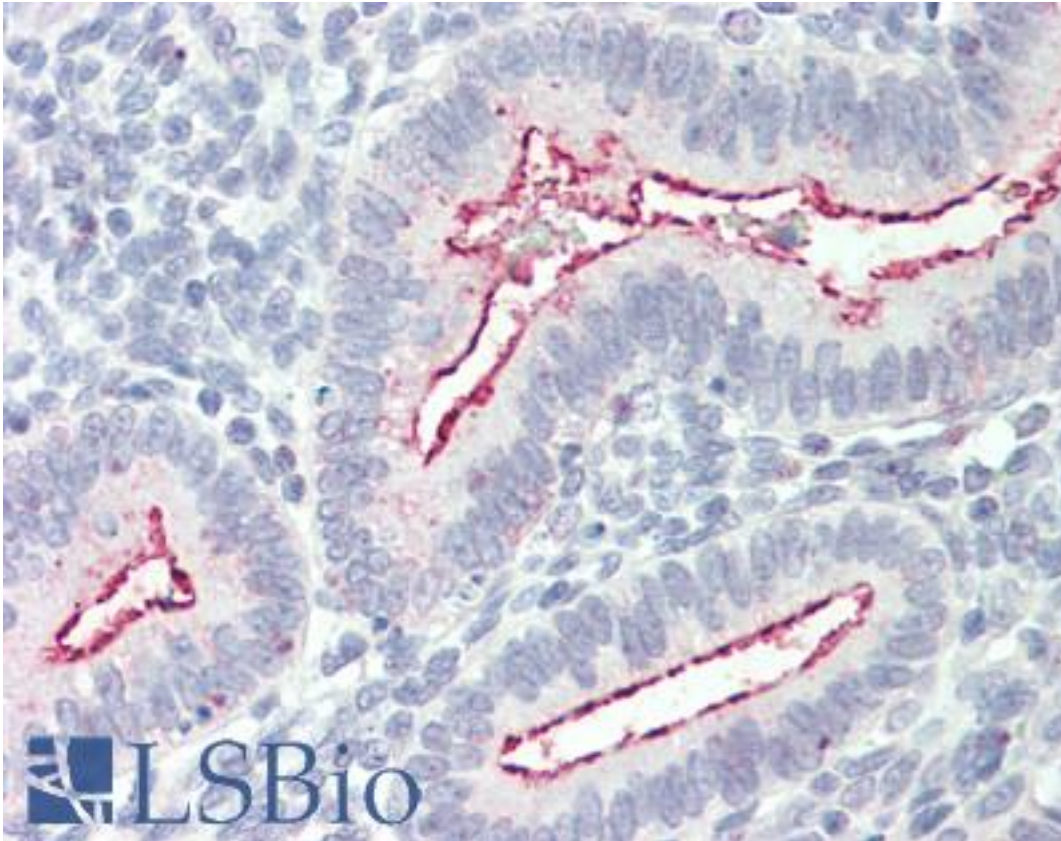


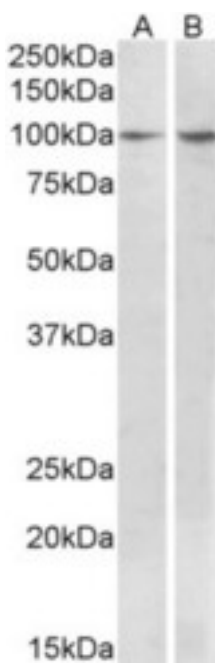
BCAR1 / p130Cas Goat anti-Human Polyclonal (aa189-201) Antibody - LS-B10570 - LSBio	
CatalogID:	LS-B10570
Validation:	This antibody replaces catalog number LS-C204978. It has been validated for use in the following assays: IHC-P.
Target:	breast cancer anti-estrogen resistance 1 (BCAR1)
Synonyms:	BCAR1 Antibody, CAS Antibody, CAS1 Antibody, CRKAS Antibody, CASS1 Antibody, CRK-associated substrate Antibody, p130Cas Antibody
Host	BCAR1 antibody was produced in Goat
Clonality:	Polyclonal
Immunogen Species:	BCAR1 / p130Cas antibody was raised against Human
Antigen Type:	Synthetic peptide
Immunogen:	BCAR1 / p130Cas antibody was raised against synthetic peptide C-KQTSTFSKQTPHH from an internal region of human BCAR1 / p130Cas (NP_001164185.1; NP_001164186.1; NP_001164187.1; NP_001164188.1; NP_001164189.1; NP_055382.2; NP_001164190.1; NP_001164191.1; NP_001164192.1). Percent identity by BLAST analysis: Human, Chimpanzee, Gorilla, Gibbon, Monkey, Mouse, Rat, Elephant, Guinea pig (100%); Ferret, Bat, Panda, Horse, Pig (92%); Bovine (85%).
Specificity:	Human BCAR1 / p130Cas. This antibody is expected to recognize reported isoforms1, 2, 3, 5, 6 and 7.
Epitope:	aa189-201
Reactivity:	Human, Chimpanzee, Gibbon, Monkey, Mouse, Rat, Guinea pig
Purification:	Immunoaffinity purified
Presentation:	Tris saline, pH 7.3, 0.5% BSA, 0.02% sodium azide
Recommended Storage:	Store at -20°C. Minimize freezing and thawing.
Usage Summary:	Peptide ELISA: antibody detection limit dilution 1:128000. Western blot: Approx 100kD band observed in lysates of Human breast cancer and of cell line MCF7 (calculated MW of 97.9kD according to NP_001164185.1). Recommended concentration: 1-3 ug/ml.
Uses:	IHC - Paraffin (5 µg/ml), Western blot (1 - 3 µg/ml), ELISA (1:128000) (Optimal dilution to be determined by the researcher)
Size:	50 µg

Immunohistochemistry Image:



Human Uterus: Formalin-Fixed, Paraffin-Embedded (FFPE)

Western Blot Image:



BCAR1 antibody (1 ug/ml) staining of MCF7 (A) and Human Breast cancer (B) lysates (35 ug protein in RIPA buffer). Primary incubation was 1 hour. Detected by chemiluminescence.

Requested From:	Japan
Laboratory Reagent For In Vitro Research Use Only	
Not for resale without prior written consent from LifeSpan BioSciences, Inc.	
Created on 9/23/2014	
© 2014 LifeSpan BioSciences	