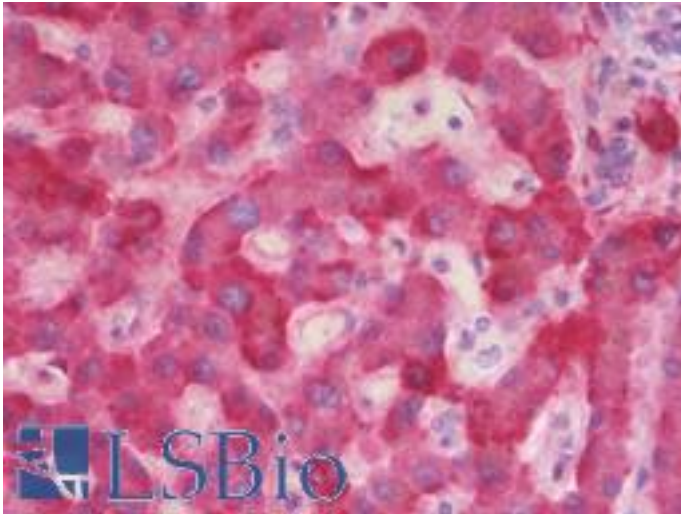


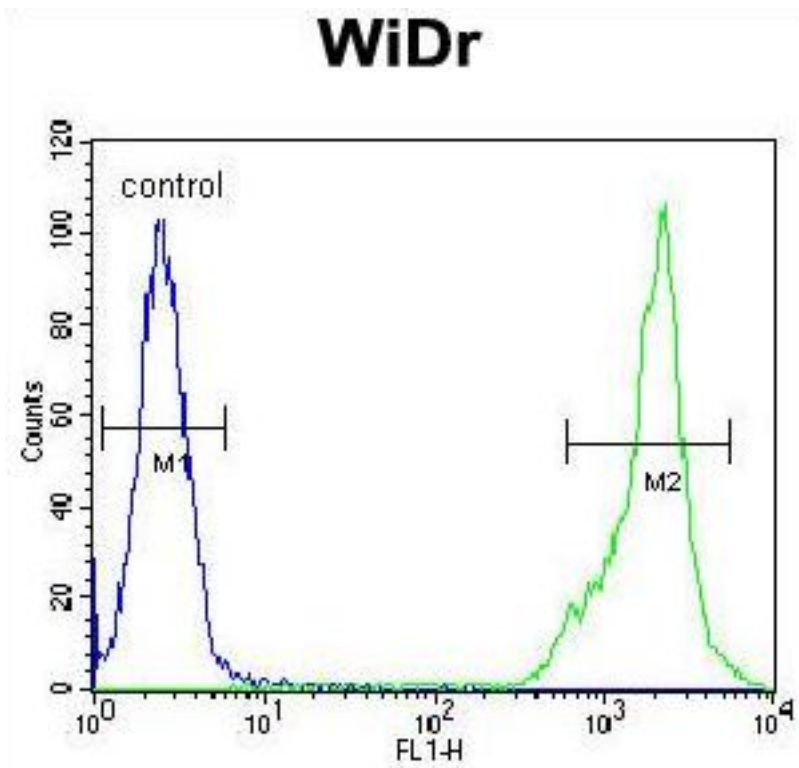
| C4BPA / C4BP Rabbit anti-Human Polyclonal (aa470-499) Antibody - LS-B10567 - LSBio | |
|--|--|
| CatalogID: | LS-B10567 |
| Validation: | This antibody replaces catalog number LS-C168131. It has been validated for use in the following assays: IHC-P. |
| Target: | complement component 4 binding protein, alpha (C4BPA) |
| Synonyms: | C4BPA Antibody, C4BP Antibody, PrP Antibody, Proline-rich protein Antibody |
| Host | C4BPA antibody was produced in Rabbit |
| Clonality: | Polyclonal |
| Immunogen Species: | C4BPA / C4BP antibody was raised against Human |
| Antigen Type: | Synthetic peptide |
| Immunogen: | C4BPA / C4BP antibody was raised against kLH-conjugated synthetic peptide from C-terminal region of human C4BPA. |
| Specificity: | Human C4BPA / C4BP |
| Epitope: | aa470-499 |
| Reactivity: | Human |
| Purification: | Immunoaffinity purified |
| Presentation: | PBS, 0.09% sodium azide |
| Recommended Storage: | Maintain refrigerated at 2-8°C for up to 6 months. For long term storage store at -20°C. |
| Uses: | IHC - Paraffin (1:100), Western blot (1:1000), Flow Cytometry (1:10 - 1:50) (Optimal dilution to be determined by the researcher) |
| Size: | 200 µl |

Immunohistochemistry Image:



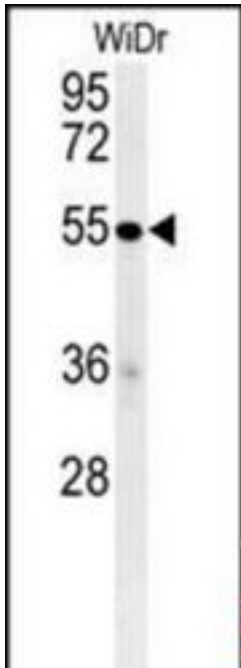
Human Liver: Formalin-Fixed, Paraffin-Embedded (FFPE)

Flow Cytometry Image:



C4BPA Antibody (C-term) flow cytometry of WiDr cells (right histogram) compared to a negative control cell (left histogram). FITC-conjugated goat-anti-rabbit secondary antibodies were used for the analysis.

Western Blot Image:



C4BPA Antibody (C-term) Western blot of WiDr cell line lysates (35 ug/lane). This demonstrates the C4BPA antibody detected the C4BPA protein (arrow).

Requested From:

Japan

Laboratory Reagent For In Vitro Research Use Only

Not for resale without prior written consent from LifeSpan BioSciences, Inc.

Created on 9/23/2014

© 2014 LifeSpan BioSciences