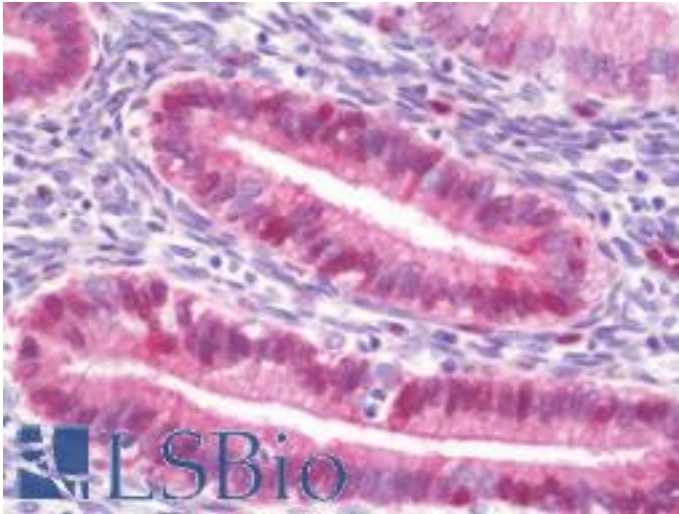


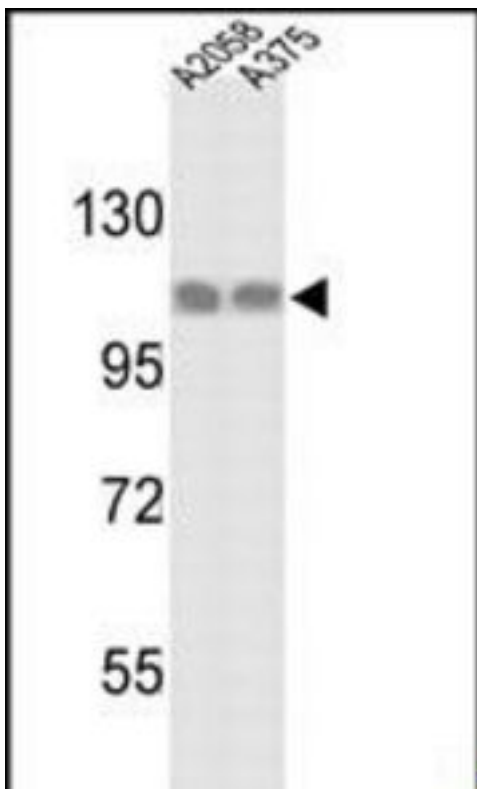
HSPH1 / HSP110 Rabbit anti-Human Polyclonal (aa717-745) Antibody - LS-B10566 - LSBio	
<b>CatalogID:</b>	LS-B10566
<b>Validation:</b>	This antibody replaces catalog number LS-C97359. It has been validated for use in the following assays: IHC-P.
<b>Target:</b>	heat shock 105kDa/110kDa protein 1 (HSPH1)
<b>Synonyms:</b>	HSPH1 Antibody, Heat shock 105kD beta Antibody, Heat shock 110 kDa protein Antibody, Heat shock protein 105 kDa Antibody, HSP105 Antibody, HSP110 Antibody, Heat-shock protein 105 kd Antibody, HSP105A Antibody, HSP105B Antibody, NY-CO-25 Antibody, KIAA0201 Antibody, Antigen NY-CO-25 Antibody, Heat shock 105kD alpha Antibody, Heat shock 105kDa protein 1 Antibody, Heat shock protein 110 Antibody
<b>Host</b>	HSPH1 antibody was produced in Rabbit
<b>Clonality:</b>	Polyclonal
<b>Immunogen Species:</b>	HSPH1 / HSP110 antibody was raised against Human
<b>Antigen Type:</b>	Synthetic peptide
<b>Immunogen:</b>	HSPH1 / HSP110 antibody was raised against kLH conjugated synthetic peptide selected from the C-terminal region of human HSPH1.
<b>Epitope:</b>	aa717-745
<b>Reactivity:</b>	Human
<b>Purification:</b>	Ammonium sulfate precipitation
<b>Presentation:</b>	PBS, 0.09% sodium azide
<b>Recommended Storage:</b>	Maintain refrigerated at 2-8°C for up to 6 months. For long term storage store at -20°C.
<b>Uses:</b>	IHC - Paraffin (1:100), Western blot (1:1000) (Optimal dilution to be determined by the researcher)
<b>Size:</b>	200 µl

**Immunohistochemistry Image:**



Human Uterus, Endometrium: Formalin-Fixed, Paraffin-Embedded (FFPE)

**Western Blot Image:**



Western blot of HSPH1 Antibody in A2058 and A375 cell line lysates (35 ug/lane). HSPH1 (arrow) was detected using the purified Pab.

**Requested From:**

Japan

Laboratory Reagent For In Vitro Research Use Only

Not for resale without prior written consent from LifeSpan BioSciences, Inc.

Created on 9/23/2014

© 2014 LifeSpan BioSciences