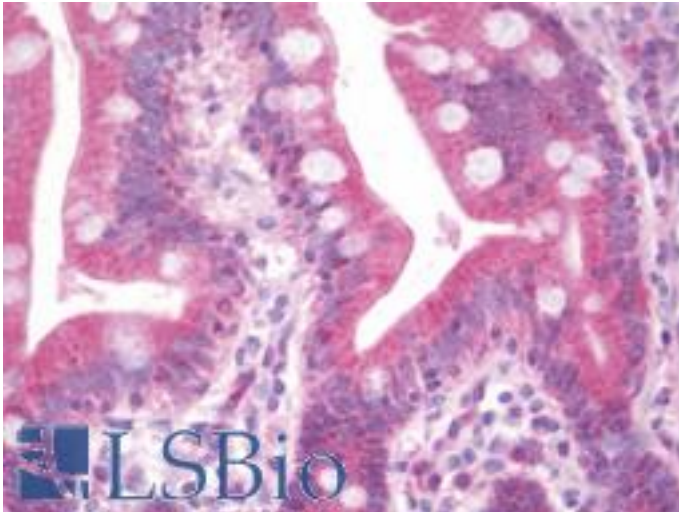


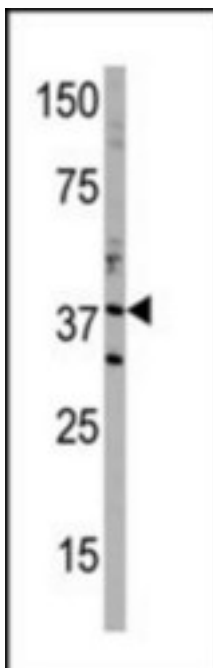
DIMT1L Rabbit anti-Human Polyclonal (aa268-298) Antibody - LS-B10564 - LSBio	
<b>CatalogID:</b>	LS-B10564
<b>Validation:</b>	This antibody replaces catalog number LS-C97958. It has been validated for use in the following assays: IHC-P.
<b>Target:</b>	DIM1 dimethyladenosine transferase 1 homolog ( <i>S. cerevisiae</i> ) (DIMT1)
<b>Synonyms:</b>	DIMT1 Antibody, 18S rRNA dimethylase Antibody, DIMT1L Antibody, Dimethyladenosine transferase Antibody, HSA9761 Antibody, HUSSY5 Antibody, Probable 18S rRNA dimethylase Antibody, DIM1 Antibody
<b>Host</b>	DIMT1 antibody was produced in Rabbit
<b>Clonality:</b>	Polyclonal
<b>Immunogen Species:</b>	DIMT1L antibody was raised against Human
<b>Antigen Type:</b>	Synthetic peptide
<b>Immunogen:</b>	DIMT1L antibody was raised against kLH conjugated synthetic peptide selected from the C-terminal region of human DIMT1.
<b>Epitope:</b>	aa268-298
<b>Reactivity:</b>	Human
<b>Purification:</b>	Ammonium sulfate precipitation
<b>Presentation:</b>	PBS, 0.09% sodium azide
<b>Recommended Storage:</b>	Maintain refrigerated at 2-8°C for up to 6 months. For long term storage store at -20°C.
<b>Uses:</b>	IHC - Paraffin (1:100), Western blot (1:1000) (Optimal dilution to be determined by the researcher)
<b>Size:</b>	200 µl

**Immunohistochemistry Image:**



Human Small Intestine: Formalin-Fixed, Paraffin-Embedded (FFPE)

**Western Blot Image:**



Western blot of anti-DIMT1 antibody in T47D cell line lysate (35 ug/lane). DIMT1 (arrow) was detected using the purified Pab (1:60 dilution).

**Requested From:**

Japan

Laboratory Reagent For In Vitro Research Use Only

Not for resale without prior written consent from LifeSpan BioSciences, Inc.

Created on 9/23/2014

© 2014 LifeSpan BioSciences