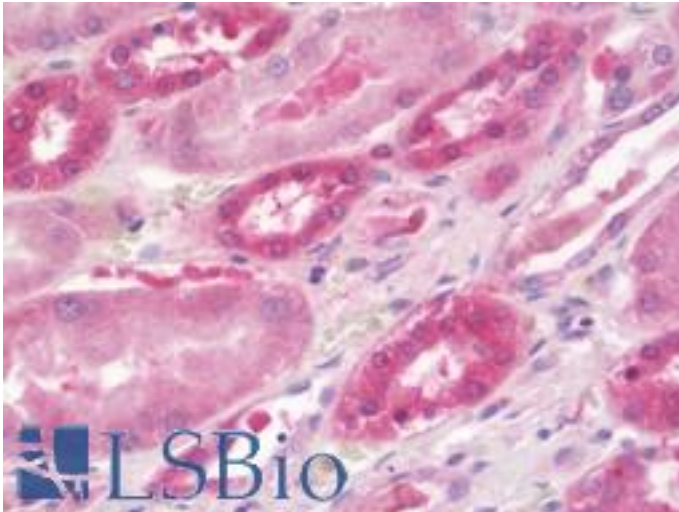


ATF3 Rabbit anti-Human Polyclonal (aa140-168) Antibody - LS-B10558 - LSBio

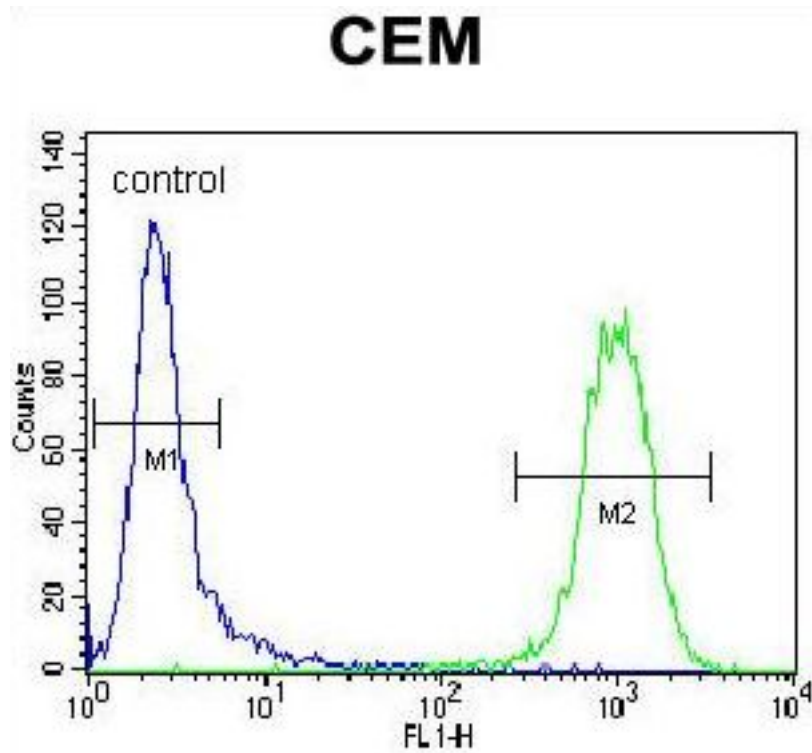
CatalogID:	LS-B10558
Validation:	This antibody replaces catalog number LS-C156562. It has been validated for use in the following assays: IHC-P.
Target:	activating transcription factor 3 (ATF3)
Synonyms:	ATF3 Antibody
Family / Subfamily:	Transcription factor / not assigned-Transcription factor
Host	ATF3 antibody was produced in Rabbit
Clonality:	Polyclonal
Immunogen Species:	ATF3 antibody was raised against Human
Antigen Type:	Synthetic peptide
Immunogen:	ATF3 antibody was raised against kLH-conjugated synthetic peptide from C-terminal region of human ATF3.
Specificity:	Human ATF3
Epitope:	aa140-168
Reactivity:	Human
Purification:	Immunoaffinity purified
Presentation:	PBS, 0.09% sodium azide
Recommended Storage:	Maintain refrigerated at 2-8°C for up to 6 months. For long term storage store at -20°C.
Uses:	IHC - Paraffin (1:100), Western blot (1:1000), Flow Cytometry (1:10 - 1:50) (Optimal dilution to be determined by the researcher)
Size:	200 µl

Immunohistochemistry Image:



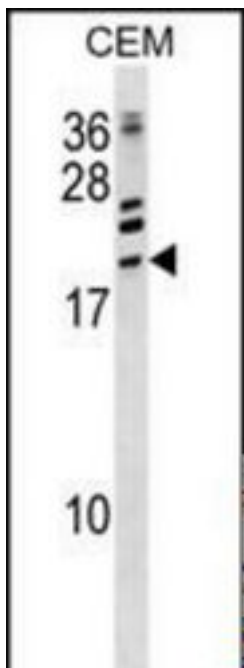
Human Kidney: Formalin-Fixed, Paraffin-Embedded (FFPE)

Flow Cytometry Image:



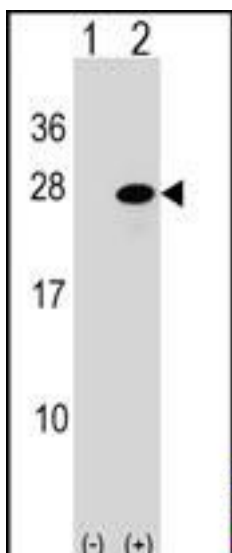
ATF3 Antibody (C-term) flow cytometry of CEM cells (right histogram) compared to a negative control cell (left histogram). FITC-conjugated goat-anti-rabbit secondary antibodies were used for the analysis.

Western Blot Image:



ATF3 Antibody (C-term) Western blot of CEM cell line lysates (35 ug/lane). This demonstrates the ATF3 antibody detected the ATF3 protein (arrow).

Western Blot Image:



Western blot of ATF3 (arrow) using rabbit polyclonal ATF3 Antibody (C-term). 293 cell lysates (2 ug/lane) either nontransfected (Lane 1) or transiently transfected (Lane 2) with the ATF3 gene.

Requested From:

Japan

Laboratory Reagent For In Vitro Research Use Only

Not for resale without prior written consent from LifeSpan BioSciences, Inc.

Created on 9/23/2014

© 2014 LifeSpan BioSciences