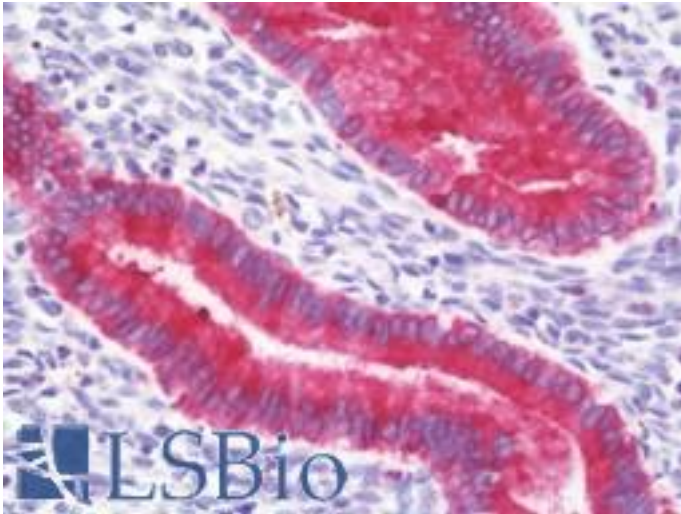


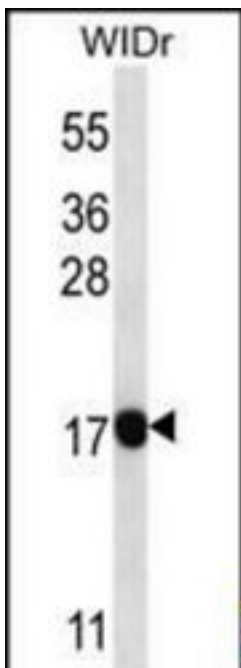
PAEP / Glycodelin / GdF Rabbit anti-Human Polyclonal (aa73-101) Antibody - LS-B10557 - LSBio	
CatalogID:	LS-B10557
Validation:	This antibody replaces catalog number LS-C163337. It has been validated for use in the following assays: IHC-P.
Target:	progesterone-associated endometrial protein (PAEP)
Synonyms:	PAEP Antibody, GD Antibody, GdF Antibody, Glycodelin Antibody, Glycodelin-S Antibody, Glycodelin-A Antibody, Glycodelin-F Antibody, PP14 Antibody, Alpha uterine protein Antibody, Placental protein 14 Antibody, GdS Antibody, PAEG Antibody, PEP Antibody
Host	PAEP antibody was produced in Rabbit
Clonality:	Polyclonal
Immunogen Species:	PAEP / Glycodelin / GdF antibody was raised against Human
Antigen Type:	Synthetic peptide
Immunogen:	PAEP / Glycodelin / GdF antibody was raised against kLH-conjugated synthetic peptide from internal region of human PAEP.
Specificity:	Human Glycodelin / GdF
Epitope:	aa73-101
Reactivity:	Human
Purification:	Immunoaffinity purified
Presentation:	PBS, 0.09% sodium azide
Recommended Storage:	Maintain refrigerated at 2-8°C for up to 6 months. For long term storage store at -20°C.
Uses:	IHC - Paraffin (1:100), Western blot (1:1000) (Optimal dilution to be determined by the researcher)
Size:	200 µl

Immunohistochemistry Image:



Human Uterus, Endometrium: Formalin-Fixed, Paraffin-Embedded (FFPE)

Western Blot Image:



PAEP Antibody (Center) Western blot of WiDr cell line lysates (35 ug/lane). This demonstrates the PAEP antibody detected the PAEP protein (arrow).

Requested From:

Japan

Laboratory Reagent For In Vitro Research Use Only

Not for resale without prior written consent from LifeSpan BioSciences, Inc.

Created on 9/23/2014

© 2014 LifeSpan BioSciences