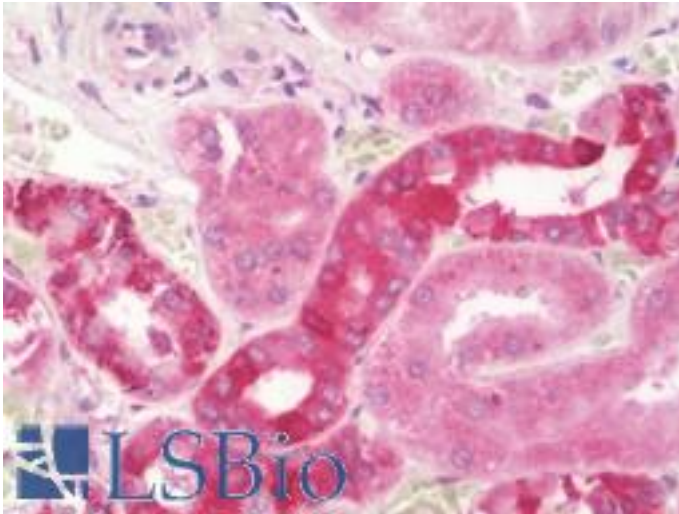


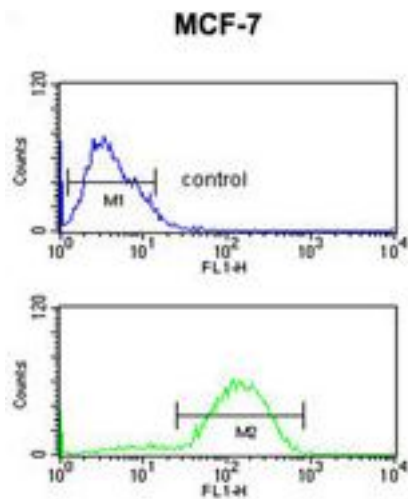
HSD2 / HSD11B2 Rabbit anti-Human Polyclonal (aa277-306) Antibody - LS-B10555 - LSBio	
<b>CatalogID:</b>	LS-B10555
<b>Validation:</b>	This antibody replaces catalog number LS-C165030. It has been validated for use in the following assays: IHC-P.
<b>Target:</b>	hydroxysteroid (11-beta) dehydrogenase 2 (HSD11B2)
<b>Synonyms:</b>	HSD11B2 Antibody, -HSD11 type II Antibody, 11-beta-HSD Antibody, 11-beta-HSD2 Antibody, 11-DH2 Antibody, AME1 Antibody, AME Antibody, HSD2 Antibody, SDR9C3 Antibody, HSD11K Antibody
<b>Host</b>	HSD11B2 antibody was produced in Rabbit
<b>Clonality:</b>	Polyclonal
<b>Immunogen Species:</b>	HSD2 / HSD11B2 antibody was raised against Human
<b>Antigen Type:</b>	Synthetic peptide
<b>Immunogen:</b>	HSD2 / HSD11B2 antibody was raised against kLH-conjugated synthetic peptide from internal region of human HSD11B2.
<b>Specificity:</b>	Human HSD2 / HSD11B2
<b>Epitope:</b>	aa277-306
<b>Reactivity:</b>	Human
<b>Purification:</b>	Immunoaffinity purified
<b>Presentation:</b>	PBS, 0.09% sodium azide
<b>Recommended Storage:</b>	Maintain refrigerated at 2-8°C for up to 6 months. For long term storage store at -20°C.
<b>Uses:</b>	IHC - Paraffin (1:100), Western blot (1:1000), Flow Cytometry (1:10 - 1:50) (Optimal dilution to be determined by the researcher)
<b>Size:</b>	200 µl

**Immunohistochemistry Image:**



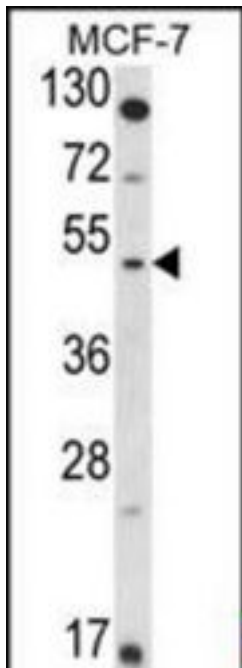
Human Kidney: Formalin-Fixed, Paraffin-Embedded (FFPE)

**Flow Cytometry Image:**



HSD11B2 Antibody (Center) flow cytometry of MCF-7 cells (bottom histogram) compared to a negative control cell (top histogram). FITC-conjugated goat-anti-rabbit secondary antibodies were used for the analysis.

**Western Blot Image:**



Western blot of HSD11B2 Antibody (Center) in MCF-7 cell line lysates (35 ug/lane). HSD11B2 (arrow) was detected using the purified Pab.

**Requested From:**

Japan

Laboratory Reagent For In Vitro Research Use Only

Not for resale without prior written consent from LifeSpan BioSciences, Inc.

Created on 9/23/2014

© 2014 LifeSpan BioSciences