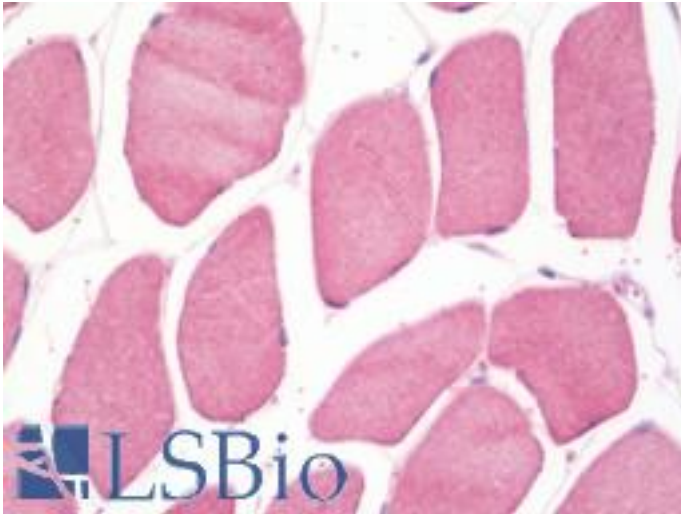


**FAM40A Rabbit anti-Human Polyclonal (aa352-381) Antibody - LS-B10554 - LSBio**

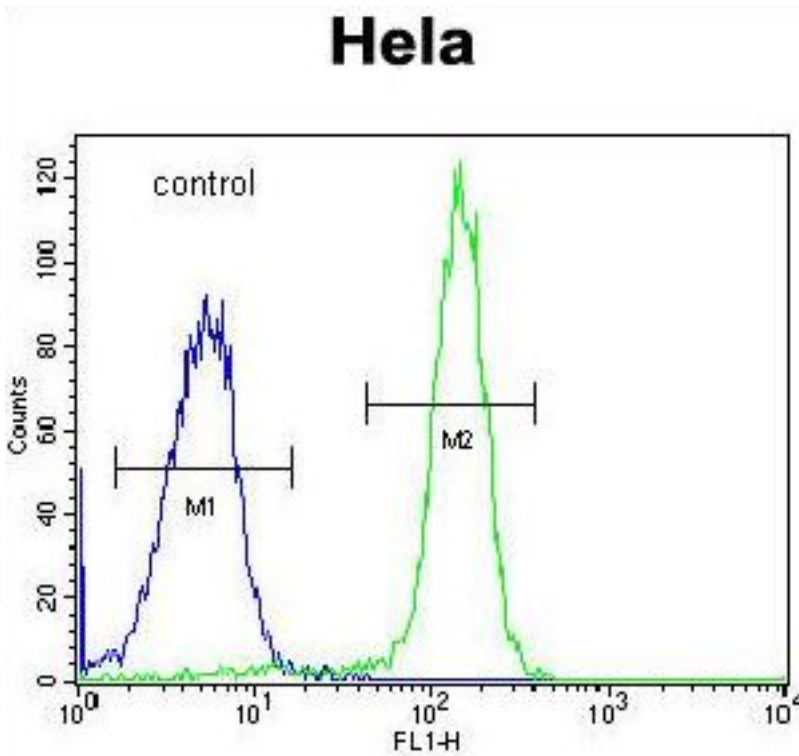
<b>CatalogID:</b>	LS-B10554
<b>Validation:</b>	This antibody replaces catalog number LS-C166002. It has been validated for use in the following assays: IHC-P.
<b>Target:</b>	striatin interacting protein 1 (STRIP1)
<b>Synonyms:</b>	STRIP1 Antibody, FAM40A Antibody, Striatin interacting protein 1 Antibody, FAR11A Antibody
<b>Host</b>	STRIP1 antibody was produced in Rabbit
<b>Clonality:</b>	Polyclonal
<b>Immunogen Species:</b>	FAM40A antibody was raised against Human
<b>Antigen Type:</b>	Synthetic peptide
<b>Immunogen:</b>	FAM40A antibody was raised against kLH-conjugated synthetic peptide from internal region of human FAM40A.
<b>Specificity:</b>	Human FAM40A
<b>Epitope:</b>	aa352-381
<b>Reactivity:</b>	Human, Mouse
<b>Purification:</b>	Immunoaffinity purified
<b>Presentation:</b>	PBS, 0.09% sodium azide
<b>Recommended Storage:</b>	Maintain refrigerated at 2-8°C for up to 6 months. For long term storage store at -20°C.
<b>Uses:</b>	IHC - Paraffin (1:100), Western blot (1:1000), Flow Cytometry (1:10 - 1:50) (Optimal dilution to be determined by the researcher)
<b>Size:</b>	200 µl

**Immunohistochemistry Image:**



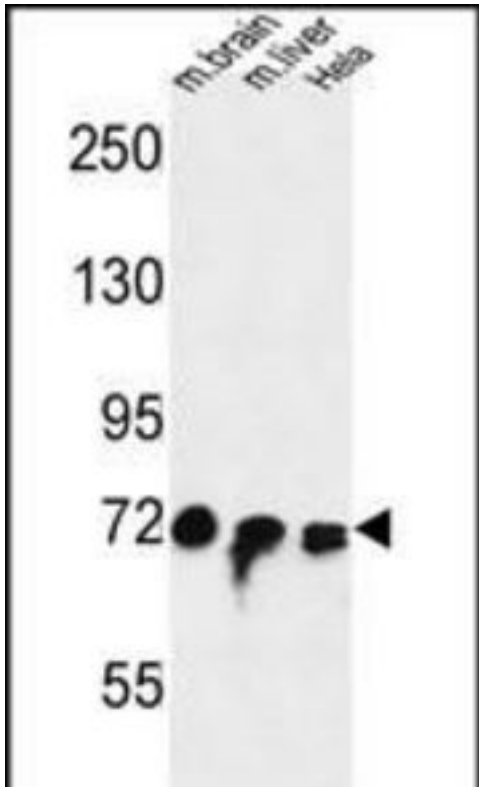
Human Skeletal Muscle: Formalin-Fixed, Paraffin-Embedded (FFPE)

**Flow Cytometry Image:**



FAM40A Antibody (Center) flow cytometry of HeLa cells (right histogram) compared to a negative control cell (left histogram). FITC-conjugated goat-anti-rabbit secondary antibodies were used for the analysis.

**Western Blot Image:**



FAM40A Antibody (Center) Western blot of mouse brain,liver tissue and HeLa cell line lysates (35 ug/lane). This demonstrates the FAM40A antibody detected the FAM40A protein (arrow).

**Requested From:**

Japan

Laboratory Reagent For In Vitro Research Use Only

Not for resale without prior written consent from LifeSpan BioSciences, Inc.

Created on 9/23/2014

© 2014 LifeSpan BioSciences