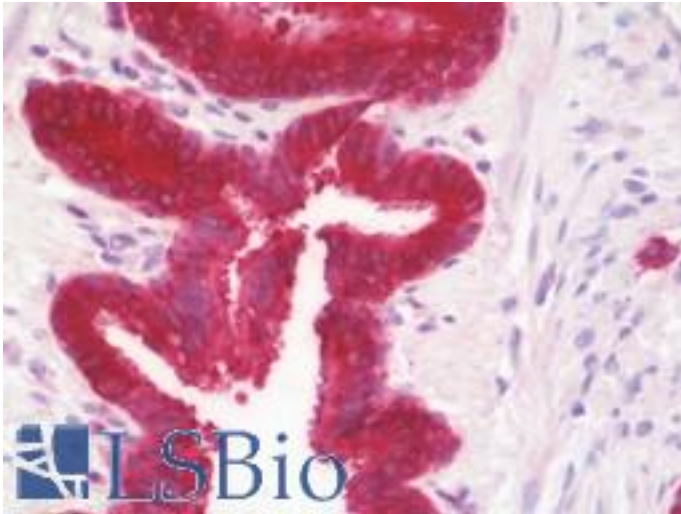


GGCT Rabbit anti-Human Polyclonal (aa139-168) Antibody - LS-B10553 - LSBio

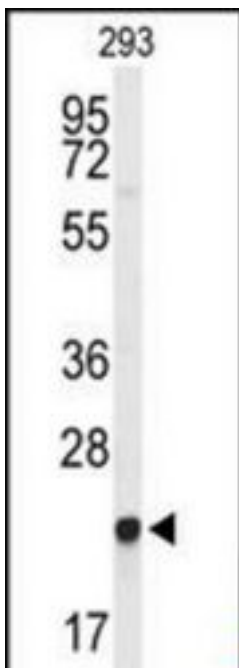
CatalogID:	LS-B10553
Validation:	This antibody replaces catalog number LS-C166454. It has been validated for use in the following assays: IHC-P.
Target:	gamma-glutamylcyclotransferase (GGCT)
Synonyms:	GGCT Antibody, CRF21 Antibody, GCTG Antibody, GGC Antibody, C7orf24 Antibody, Gamma-glutamylcyclotransferase Antibody
Host	GGCT antibody was produced in Rabbit
Clonality:	Polyclonal
Immunogen Species:	GGCT antibody was raised against Human
Antigen Type:	Synthetic peptide
Immunogen:	GGCT antibody was raised against kLH-conjugated synthetic peptide from C-terminal region of human GGCT.
Specificity:	Human GGCT
Epitope:	aa139-168
Reactivity:	Human
Purification:	Immunoaffinity purified
Presentation:	PBS, 0.09% sodium azide
Recommended Storage:	Maintain refrigerated at 2-8°C for up to 6 months. For long term storage store at -20°C.
Uses:	IHC - Paraffin (1:100), Western blot (1:1000) (Optimal dilution to be determined by the researcher)
Size:	200 µl

Immunohistochemistry Image:



Human Lung: Formalin-Fixed, Paraffin-Embedded (FFPE)

Western Blot Image:



Western blot of GGCT Antibody (C-term) in 293 cell line lysates (35 ug/lane). GGCT (arrow) was detected using the purified Pab.

Requested From:

Japan

Laboratory Reagent For In Vitro Research Use Only

Not for resale without prior written consent from LifeSpan BioSciences, Inc.

Created on 9/23/2014

© 2014 LifeSpan BioSciences