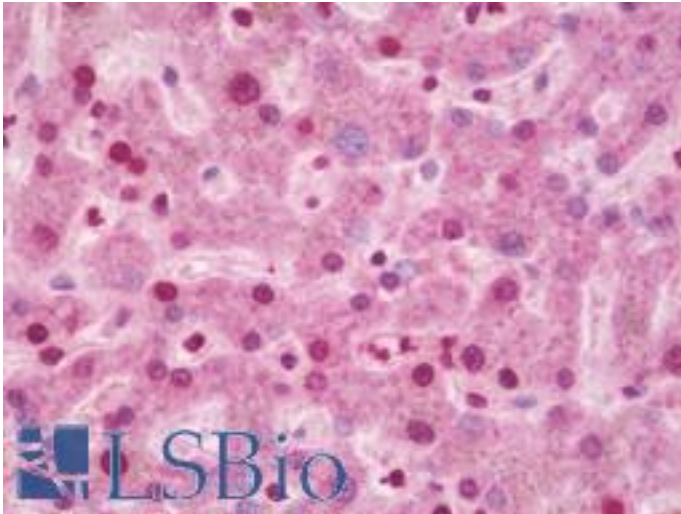


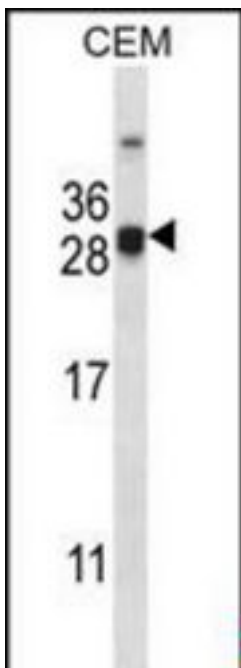
CIDEA / CIDE-A Rabbit anti-Human Polyclonal (aa181-209) Antibody - LS-B10551 - LSBio	
<b>CatalogID:</b>	LS-B10551
<b>Validation:</b>	This antibody replaces catalog number LS-C168781. It has been validated for use in the following assays: IHC-P.
<b>Target:</b>	cell death-inducing DFFA-like effector a (CIDEA)
<b>Synonyms:</b>	CIDEA Antibody, CIDE-A Antibody, Cell death activator CIDE-A Antibody
<b>Family / Subfamily:</b>	Apoptosis
<b>Host</b>	CIDEA antibody was produced in Rabbit
<b>Clonality:</b>	Polyclonal
<b>Immunogen Species:</b>	CIDEA / CIDE-A antibody was raised against Human
<b>Antigen Type:</b>	Synthetic peptide
<b>Immunogen:</b>	CIDEA / CIDE-A antibody was raised against kLH-conjugated synthetic peptide from C-terminal region of human CIDEA.
<b>Specificity:</b>	Human CIDEA
<b>Epitope:</b>	aa181-209
<b>Reactivity:</b>	Human
<b>Purification:</b>	Immunoaffinity purified
<b>Presentation:</b>	PBS, 0.09% sodium azide
<b>Recommended Storage:</b>	Maintain refrigerated at 2-8°C for up to 6 months. For long term storage store at -20°C.
<b>Uses:</b>	IHC - Paraffin (1:100), Western blot (1:1000) (Optimal dilution to be determined by the researcher)
<b>Size:</b>	200 µl

**Immunohistochemistry Image:**



Human Liver: Formalin-Fixed, Paraffin-Embedded (FFPE)

**Western Blot Image:**



CIDEA Antibody (C-term) Western blot of CEM cell line lysates (35 ug/lane). This demonstrates the CIDEA antibody detected the CIDEA protein (arrow).

**Requested From:**

Japan

Laboratory Reagent For In Vitro Research Use Only

Not for resale without prior written consent from LifeSpan BioSciences, Inc.

Created on 9/23/2014

© 2014 LifeSpan BioSciences