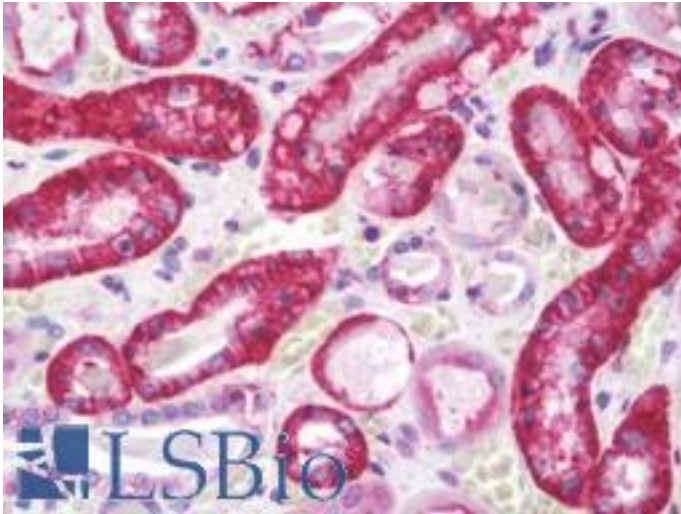


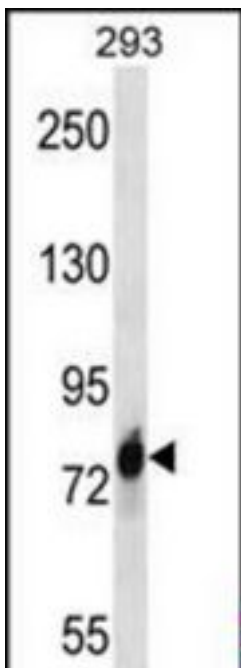
CDH16 / Cadherin 16 Rabbit anti-Human Polyclonal (aa796-824) Antibody - LS-B10550 - LSBio	
CatalogID:	LS-B10550
Validation:	This antibody replaces catalog number LS-C168606. It has been validated for use in the following assays: IHC-P.
Target:	cadherin 16, KSP-cadherin (CDH16)
Synonyms:	CDH16 Antibody, Cadherin 16, KSP-cadherin Antibody, Cadherin 16 Antibody, Cadherin-16 Antibody, Kidney-specific cadherin Antibody, KSP-cadherin Antibody
Family / Subfamily:	Cadherin / not assigned-Cadherin
Host	CDH16 antibody was produced in Rabbit
Clonality:	Polyclonal
Immunogen Species:	CDH16 / Cadherin 16 antibody was raised against Human
Antigen Type:	Synthetic peptide
Immunogen:	CDH16 / Cadherin 16 antibody was raised against kLH-conjugated synthetic peptide from C-terminal region of human CDH16.
Specificity:	Human Cadherin 16 / CDH16
Epitope:	aa796-824
Reactivity:	Human
Purification:	Immunoaffinity purified
Presentation:	PBS, 0.09% sodium azide
Recommended Storage:	Maintain refrigerated at 2-8°C for up to 6 months. For long term storage store at -20°C.
Uses:	IHC - Paraffin (1:100), Western blot (1:1000) (Optimal dilution to be determined by the researcher)
Size:	200 µl

Immunohistochemistry Image:



Human Kidney: Formalin-Fixed, Paraffin-Embedded (FFPE)

Western Blot Image:



CDH16 Antibody (C-term) Western blot of 293 cell line lysates (35 ug/lane). This demonstrates the CDH16 antibody detected the CDH16 protein (arrow).

Requested From:

Japan

Laboratory Reagent For In Vitro Research Use Only

Not for resale without prior written consent from LifeSpan BioSciences, Inc.

Created on 9/23/2014

© 2014 LifeSpan BioSciences