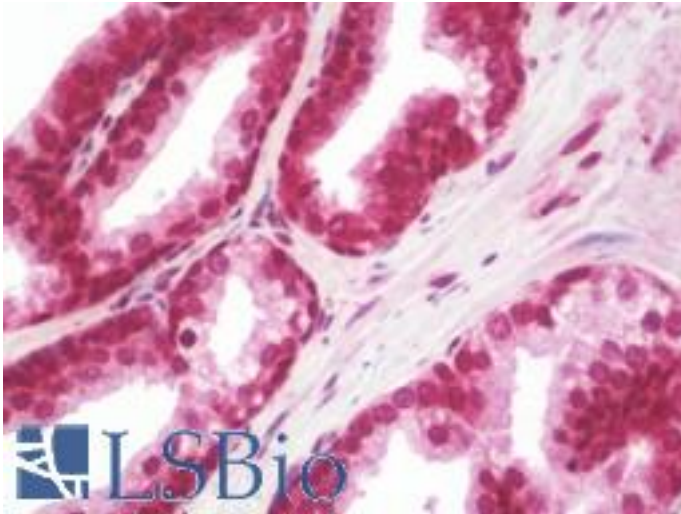


CD276 / B7-H3 Rabbit anti-Human Polyclonal (aa493-522) Antibody - LS-B10547 - LSBio

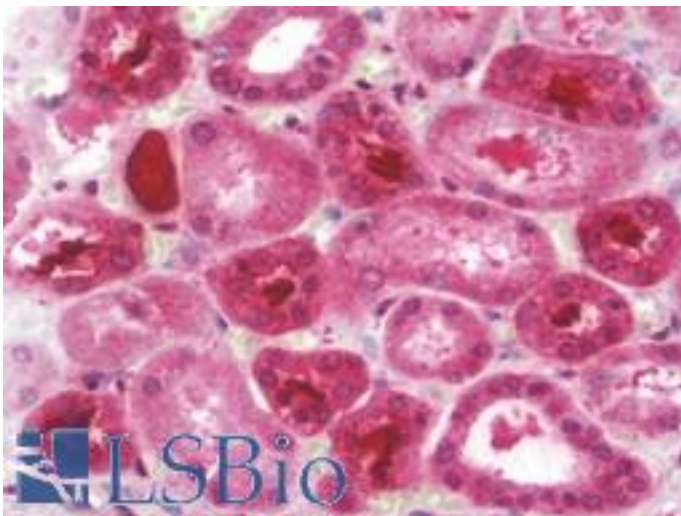
CatalogID:	LS-B10547
Validation:	This antibody replaces catalog number LS-C168532. It has been validated for use in the following assays: IHC-P.
Target:	CD276 molecule
Synonyms:	CD276 Antibody, 4Ig-B7-H3 Antibody, B7 homolog 3 Antibody, B7-H3 Antibody, CD276 antigen Antibody, CD276 molecule Antibody, Costimulatory molecule Antibody, B7H3 Antibody, B7RP-2 Antibody
Host	CD276 antibody was produced in Rabbit
Clonality:	Polyclonal
Immunogen Species:	CD276 / B7-H3 antibody was raised against Human
Antigen Type:	Synthetic peptide
Immunogen:	CD276 / B7-H3 antibody was raised against kLH-conjugated synthetic peptide from C-terminal region of human CD276.
Specificity:	Human CD276 / B7-H3
Epitope:	aa493-522
Reactivity:	Human
Purification:	Immunoaffinity purified
Presentation:	PBS, 0.09% sodium azide
Recommended Storage:	Maintain refrigerated at 2-8°C for up to 6 months. For long term storage store at -20°C.
Uses:	IHC - Paraffin (1:100), Western blot (1:1000) (Optimal dilution to be determined by the researcher)
Size:	200 µl

Immunohistochemistry Image:



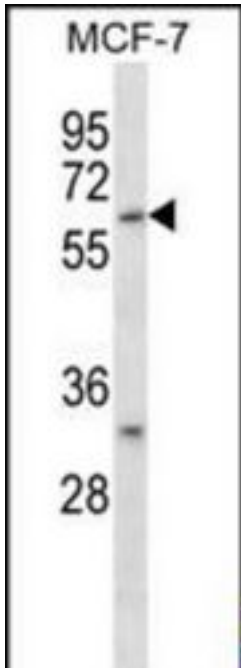
Human Prostate: Formalin-Fixed, Paraffin-Embedded (FFPE)

Immunohistochemistry Image:



Human Kidney: Formalin-Fixed, Paraffin-Embedded (FFPE)

Western Blot Image:



CD276 Antibody (C-term) Western blot of MCF-7 cell line lysates (35 ug/lane). This demonstrates the CD276 antibody detected the CD276 protein (arrow).

Requested From:

Japan

Laboratory Reagent For In Vitro Research Use Only

Not for resale without prior written consent from LifeSpan BioSciences, Inc.

Created on 9/23/2014

© 2014 LifeSpan BioSciences