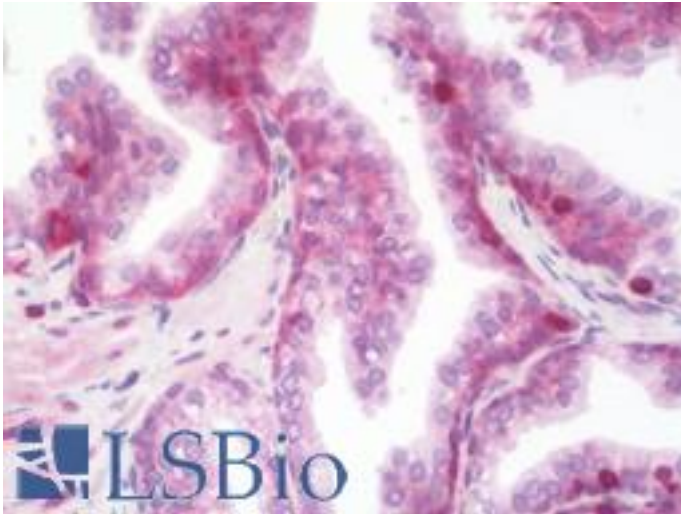


CD47 Rabbit anti-Human Polyclonal (aa288-315) Antibody - LS-B10546 - LSBio

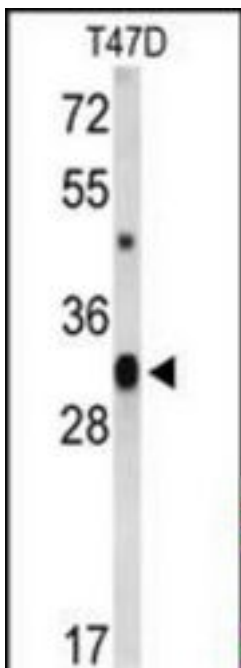
CatalogID:	LS-B10546
Validation:	This antibody replaces catalog number LS-C168545. It has been validated for use in the following assays: IHC-P.
Target:	CD47 molecule
Synonyms:	CD47 Antibody, CD47 antigen Antibody, CD47 molecule Antibody, Integrin associated protein Antibody, Integrin-associated protein Antibody, Leukocyte surface antigen CD47 Antibody, MER6 Antibody, Protein MER6 Antibody, Rh-related antigen Antibody, OA3 Antibody, CD47 glycoprotein Antibody, IAP Antibody
Host	CD47 antibody was produced in Rabbit
Clonality:	Polyclonal
Immunogen Species:	CD47 antibody was raised against Human
Antigen Type:	Synthetic peptide
Immunogen:	CD47 antibody was raised against kLH-conjugated synthetic peptide selected from C-terminal region of human CD47.
Specificity:	Human CD47
Epitope:	aa288-315
Reactivity:	Human
Purification:	Immunoaffinity purified
Presentation:	PBS, 0.09% sodium azide
Recommended Storage:	Maintain refrigerated at 2-8°C for up to 6 months. For long term storage store at -20°C.
Uses:	IHC - Paraffin (1:100), Western blot (1:1000) (Optimal dilution to be determined by the researcher)
Size:	200 µl

Immunohistochemistry Image:



Human Prostate: Formalin-Fixed, Paraffin-Embedded (FFPE)

Western Blot Image:



Western blot of CD47 Antibody (C-term) in T47D cell line lysates (35 ug/lane). CD47 (arrow) was detected using the purified Pab.

Requested From:

Japan

Laboratory Reagent For In Vitro Research Use Only

Not for resale without prior written consent from LifeSpan BioSciences, Inc.

Created on 9/23/2014

© 2014 LifeSpan BioSciences