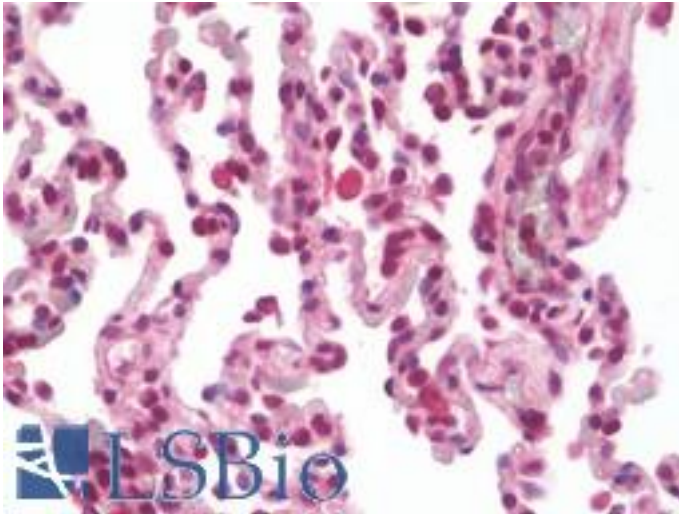


SPOPL Rabbit anti-Human Polyclonal (aa221-249) Antibody - LS-B10543 - LSBio

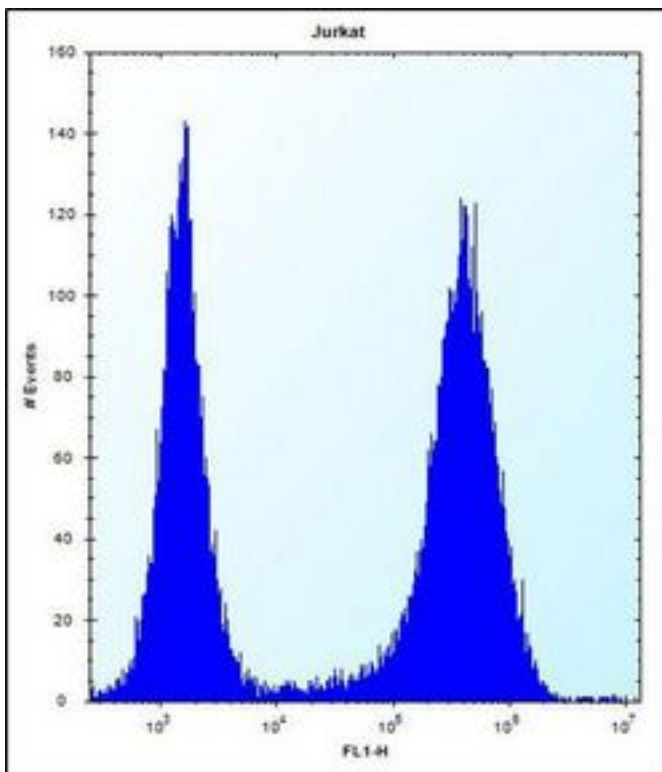
CatalogID:	LS-B10543
Validation:	This antibody replaces catalog number LS-C161467. It has been validated for use in the following assays: IHC-P.
Target:	speckle-type POZ protein-like (SPOPL)
Synonyms:	SPOPL Antibody, Roadkill homolog 2 Antibody, Speckle-type POZ protein-like Antibody, BTBD33 Antibody, HIB homolog 2 Antibody
Host	SPOPL antibody was produced in Rabbit
Clonality:	Polyclonal
Immunogen Species:	SPOPL antibody was raised against Human
Antigen Type:	Synthetic peptide
Immunogen:	SPOPL antibody was raised against kLH-conjugated synthetic peptide from internal region of human SPOPL.
Specificity:	Human SPOPL
Epitope:	aa221-249
Reactivity:	Human
Purification:	Immunoaffinity purified
Presentation:	PBS, 0.09% sodium azide
Recommended Storage:	Maintain refrigerated at 2-8°C for up to 6 months. For long term storage store at -20°C.
Uses:	IHC - Paraffin (1:100), Western blot (1:1000), Flow Cytometry (1:10 - 1:50) (Optimal dilution to be determined by the researcher)
Size:	200 µl

Immunohistochemistry Image:



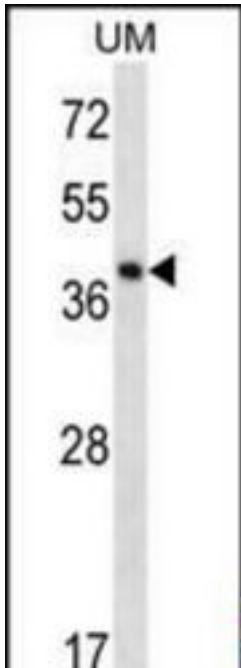
Human Lung: Formalin-Fixed, Paraffin-Embedded (FFPE)

Flow Cytometry Image:



SPOPL Antibody (Center) flow cytometry of Jurkat cells (right histogram) compared to a negative control cell (left histogram). FITC-conjugated donkey-anti-rabbit secondary antibodies were used for the analysis.

Western Blot Image:



SPOPL Antibody (Center) Western blot of UM cell line lysates (35 ug/lane). This demonstrates the SPOPL antibody detected the SPOPL protein (arrow).

Requested From:

Japan

Laboratory Reagent For In Vitro Research Use Only

Not for resale without prior written consent from LifeSpan BioSciences, Inc.

Created on 9/23/2014

© 2014 LifeSpan BioSciences