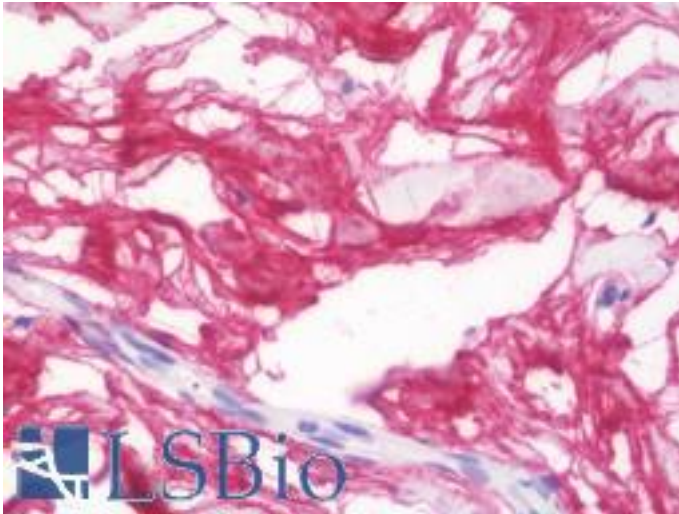


Lumican Rabbit anti-Human Polyclonal (aa198-227) Antibody - LS-B10541 - LSBio

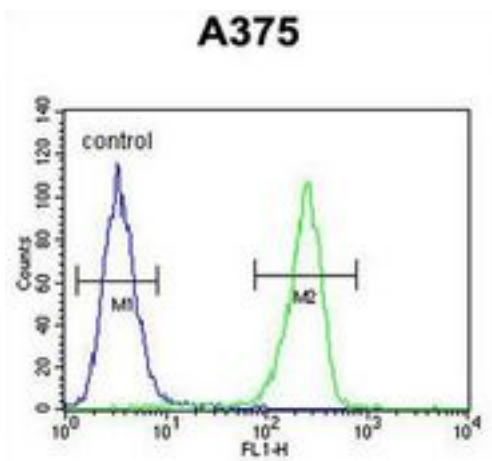
CatalogID:	LS-B10541
Validation:	This antibody replaces catalog number LS-C100252. It has been validated for use in the following assays: IHC-P.
Target:	lumican
Synonyms:	LUM Antibody, LDC Antibody, Lumican Antibody, KSPG lumican Antibody, Lumican proteoglycan Antibody, SLRR2D Antibody
Host	LUM antibody was produced in Rabbit
Clonality:	Polyclonal
Immunogen Species:	Lumican antibody was raised against Human
Antigen Type:	Synthetic peptide
Immunogen:	Lumican antibody was raised against kLH conjugated synthetic peptide selected from the Center region of human LUM.
Epitope:	aa198-227
Reactivity:	Human
Purification:	Ammonium sulfate precipitation
Presentation:	PBS, 0.09% sodium azide
Recommended Storage:	Maintain refrigerated at 2-8°C for up to 6 months. For long term storage store at -20°C.
Uses:	IHC - Paraffin (1:100), Western blot (1:1000), Flow Cytometry (1:10 - 1:50) (Optimal dilution to be determined by the researcher)
Size:	200 µl

Immunohistochemistry Image:



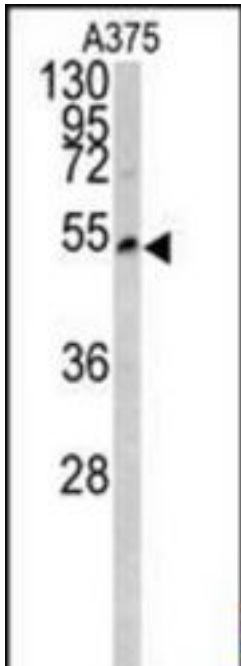
Human Breast, Connective Tissue: Formalin-Fixed, Paraffin-Embedded (FFPE)

Flow Cytometry Image:



LUM Antibody (Center) flow cytometry of A375 cells (right histogram) compared to a negative control cell (left histogram). FITC-conjugated goat-anti-rabbit secondary antibodies were used for the analysis.

Western Blot Image:



Western blot of LUM antibody (Center) in A375 cell line lysates (35 ug/lane). LUM (arrow) was detected using the purified Pab.

Requested From:

Japan

Laboratory Reagent For In Vitro Research Use Only

Not for resale without prior written consent from LifeSpan BioSciences, Inc.

Created on 9/23/2014

© 2014 LifeSpan BioSciences