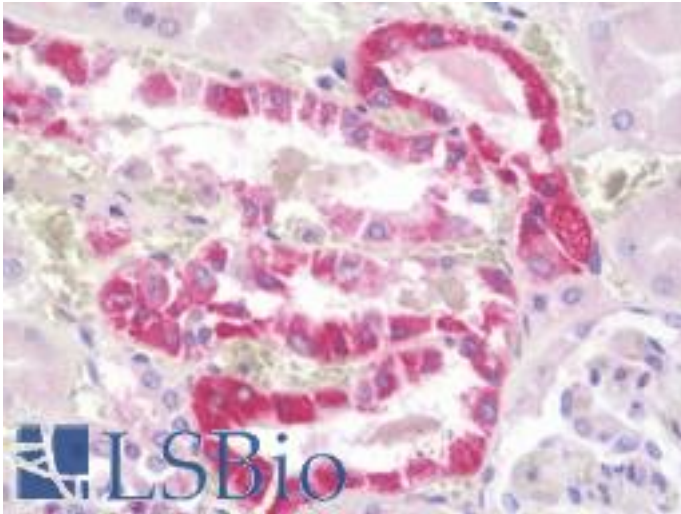


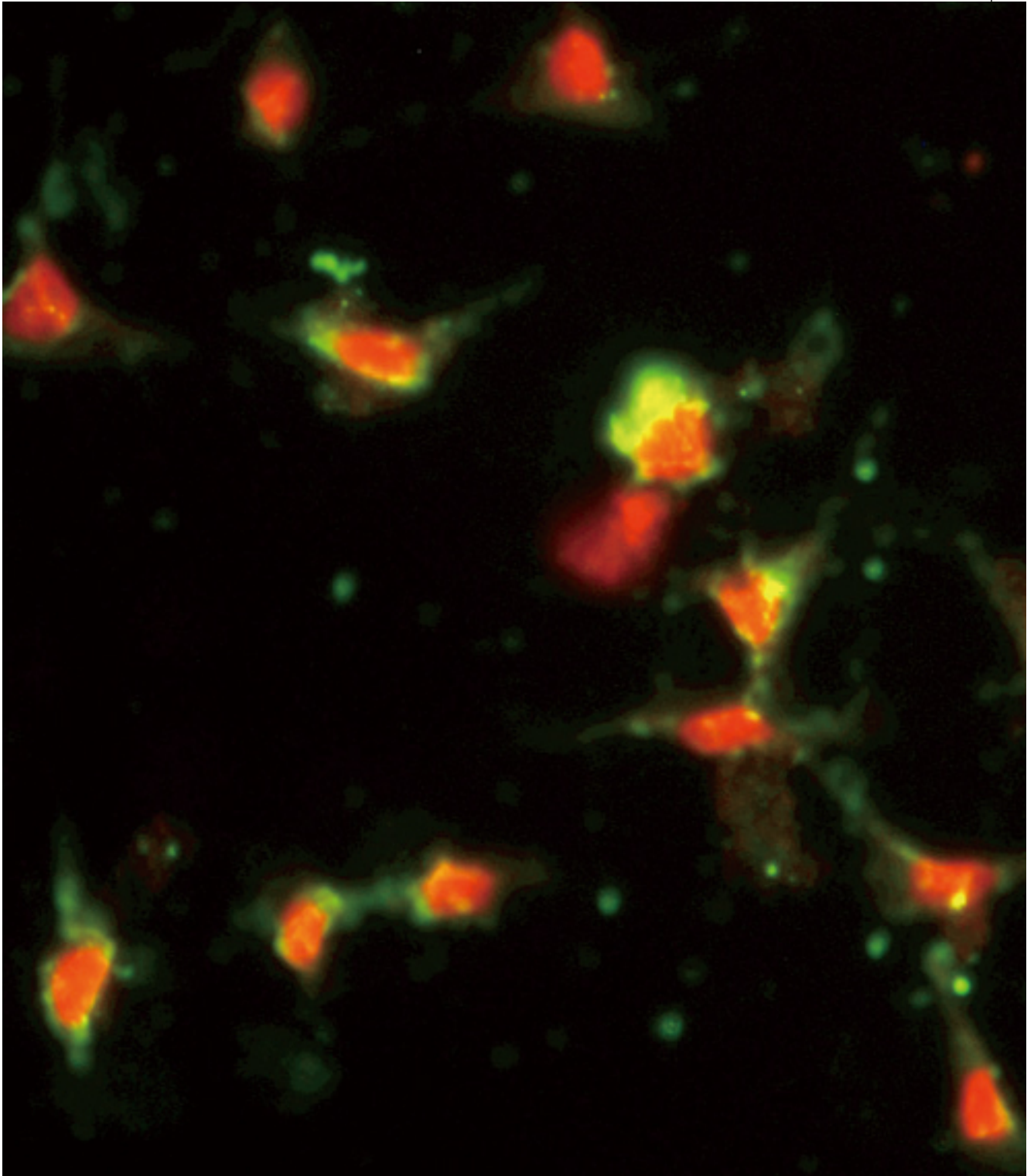
CCL2 / MCP-1 Rabbit anti-Human Polyclonal (aa62-89) Antibody - LS-B10540 - LSBio	
CatalogID:	LS-B10540
Validation:	This antibody replaces catalog number LS-C168450. It has been validated for use in the following assays: IHC-P.
Target:	chemokine (C-C motif) ligand 2 (CCL2)
Synonyms:	CCL2 Antibody, C-C motif chemokine 2 Antibody, Chemokine (C-C motif) ligand 2 Antibody, GDCF-2 Antibody, HC11 Antibody, HSMCR30 Antibody, MCP1 Antibody, SCYA2 Antibody, Small-inducible cytokine A2 Antibody, Monocyte secretory protein JE Antibody, MCAF Antibody, MCP-1 Antibody, Monocyte chemotactic protein 1 Antibody, SMC-CF Antibody
Family / Subfamily:	Interocrine / Interocrine beta
Host	CCL2 antibody was produced in Rabbit
Clonality:	Polyclonal
Immunogen Species:	CCL2 / MCP-1 antibody was raised against Human
Antigen Type:	Synthetic peptide
Immunogen:	CCL2 / MCP-1 antibody was raised against kLH-conjugated synthetic peptide from C-terminal region of human CCL2.
Specificity:	Human CCL2 / MCP-1
Epitope:	aa62-89
Reactivity:	Human
Purification:	Ammonium sulfate precipitation
Presentation:	PBS, 0.09% sodium azide
Recommended Storage:	Maintain refrigerated at 2-8°C for up to 6 months. For long term storage store at -20°C.
Uses:	IHC - Paraffin (1:75), Immunofluorescence (1:10 - 1:50), Western blot (1:1000), Flow Cytometry (1:10 - 1:50) (Optimal dilution to be determined by the researcher)
Size:	200 µl

Immunohistochemistry Image:



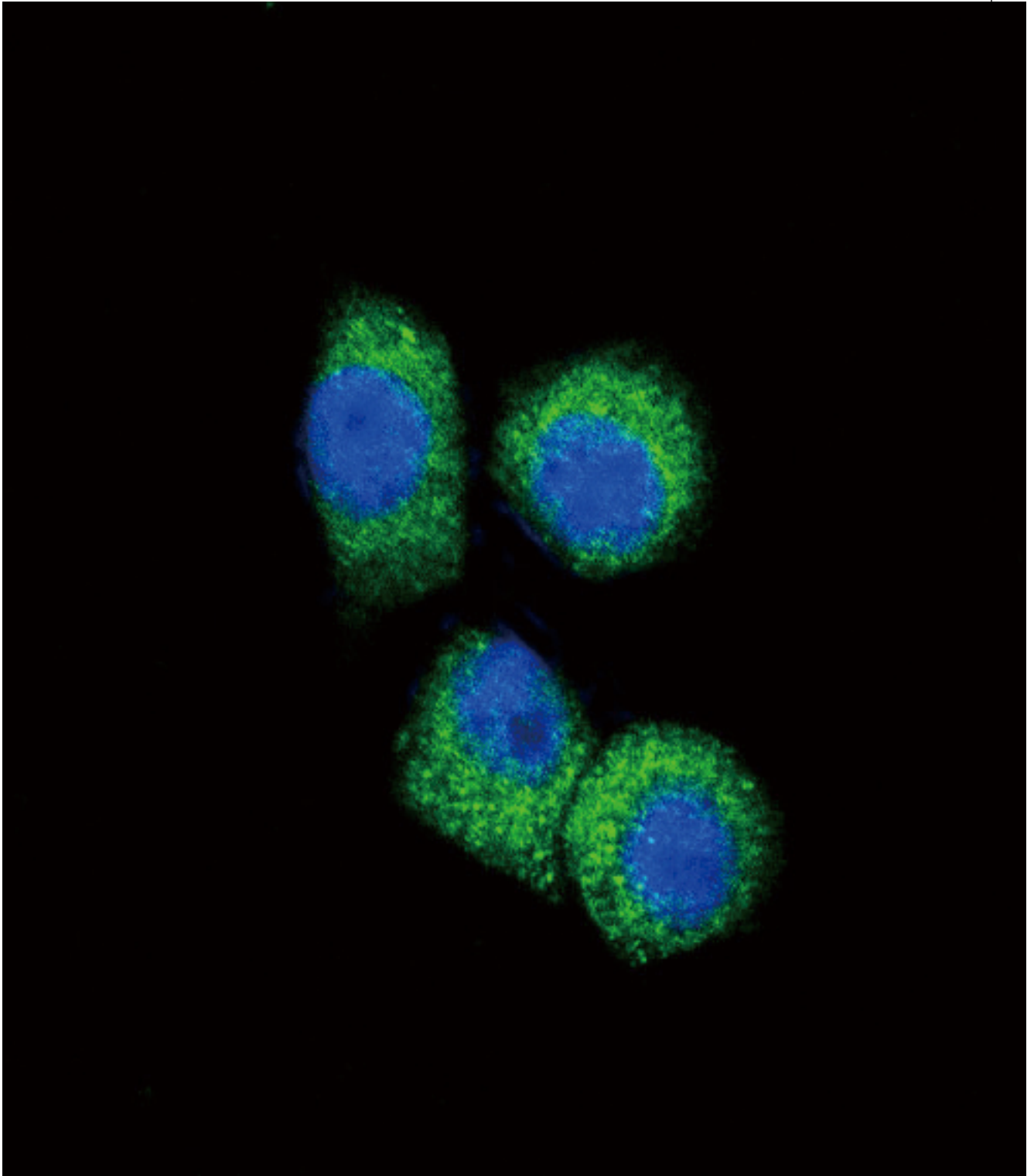
Human Kidney: Formalin-Fixed, Paraffin-Embedded (FFPE)

Immunofluorescence Image:



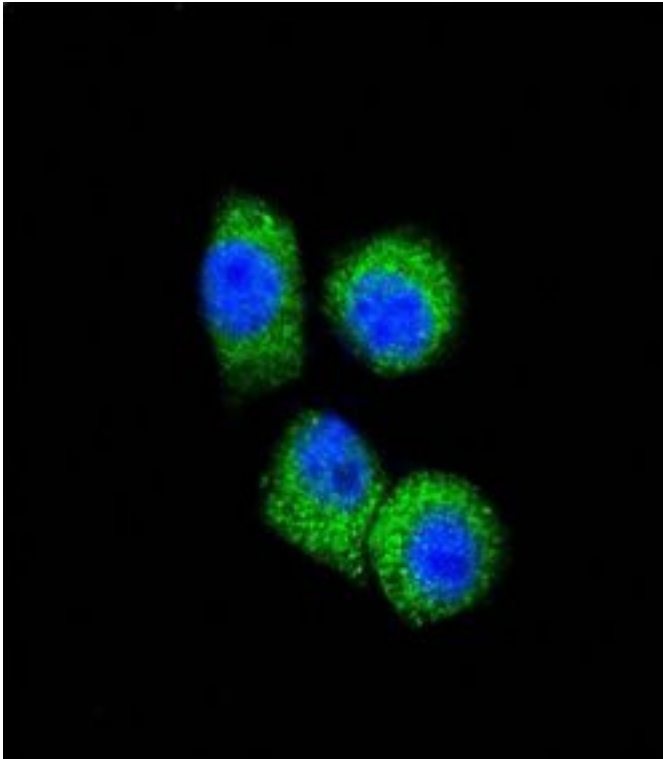
Immunofluorescence of CCL2 Antibody (C-term) with HeLa cells. 0.025 mg/ml primary antibody was followed by FITC-conjugated goat anti-rabbit IgG (whole molecule). FITC emits green fluorescence. Red counterstaining is PI.

Immunofluorescence Image:



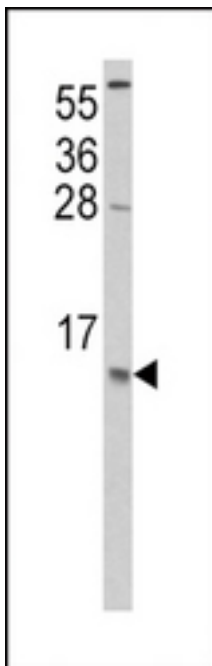
Confocal immunofluorescence of CCL2 Antibody (C-term) with HeLa cell followed by Alexa Fluor 488-conjugated goat anti-rabbit IgG (green). DAPI was used to stain the cell nuclear (blue).

Flow Cytometry Image:



Flow cytometry of HeLa cells using CCL2 Antibody (C-term)(bottom histogram) compared to a negative control cell (top histogram). FITC-conjugated goat-anti-rabbit secondary antibodies were used for the analysis.

Western Blot Image:



Western blot of CCL2 Antibody (C-term) in HeLa cell line lysates (35 ug/lane). CCL2 (arrow) was detected using the purified Pab.

Requested From:

Japan

Laboratory Reagent For In Vitro Research Use Only

Not for resale without prior written consent from LifeSpan BioSciences, Inc.

Created on 9/23/2014

© 2014 LifeSpan BioSciences