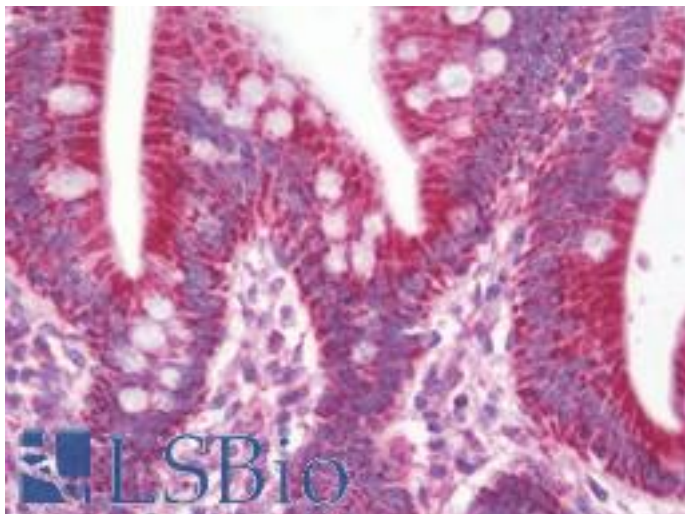


**ETHE1 Rabbit anti-Human Polyclonal (aa180-209) Antibody - LS-B10538 - LSBio**

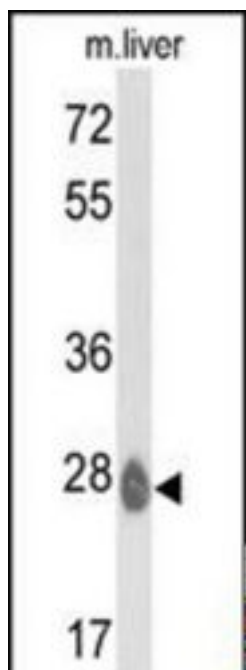
<b>CatalogID:</b>	LS-B10538
<b>Validation:</b>	This antibody replaces catalog number LS-C98378. It has been validated for use in the following assays: IHC-P.
<b>Target:</b>	ethylmalonic encephalopathy 1 (ETHE1)
<b>Synonyms:</b>	ETHE1 Antibody, D83198 Antibody, Ethylmalonic encephalopathy 1 Antibody, HSCO Antibody, YF13H12 Antibody, Protein ETHE1, mitochondrial Antibody
<b>Host</b>	ETHE1 antibody was produced in Rabbit
<b>Clonality:</b>	Polyclonal
<b>Immunogen Species:</b>	ETHE1 antibody was raised against Human
<b>Antigen Type:</b>	Synthetic peptide
<b>Immunogen:</b>	ETHE1 antibody was raised against kLH conjugated synthetic peptide selected from the C-terminal region of human ETHE1.
<b>Epitope:</b>	aa180-209
<b>Reactivity:</b>	Human, Mouse
<b>Purification:</b>	Ammonium sulfate precipitation
<b>Presentation:</b>	PBS, 0.09% sodium azide
<b>Recommended Storage:</b>	Maintain refrigerated at 2-8°C for up to 6 months. For long term storage store at -20°C.
<b>Uses:</b>	IHC - Paraffin (1:100), Western blot (1:1000) (Optimal dilution to be determined by the researcher)
<b>Size:</b>	200 µl

**Immunohistochemistry Image:**



Human Small Intestine: Formalin-Fixed, Paraffin-Embedded (FFPE)

**Western Blot Image:**



Western blot of ETHE1 Antibody with mouse liver tissue lysates (35 ug/lane). ETHE1 (arrow) was detected using the purified antibody.

**Requested From:**

Japan

Laboratory Reagent For In Vitro Research Use Only

Not for resale without prior written consent from LifeSpan BioSciences, Inc.

Created on 9/23/2014

© 2014 LifeSpan BioSciences