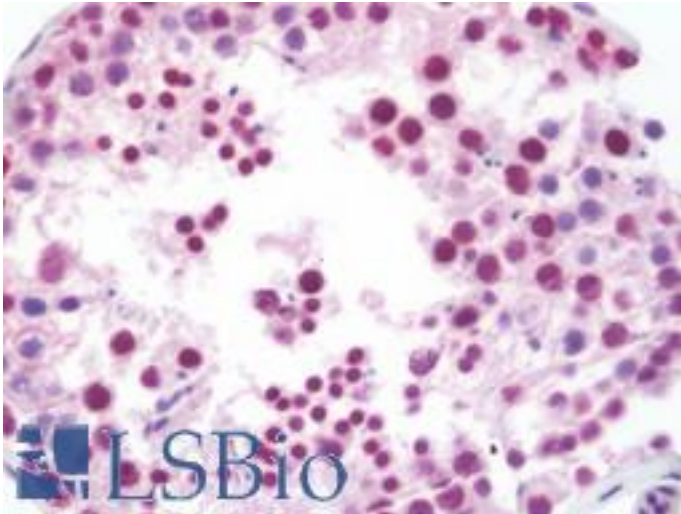


TIMP1 Rabbit anti-Human Polyclonal (aa157-188) Antibody - LS-B10535 - LSBio

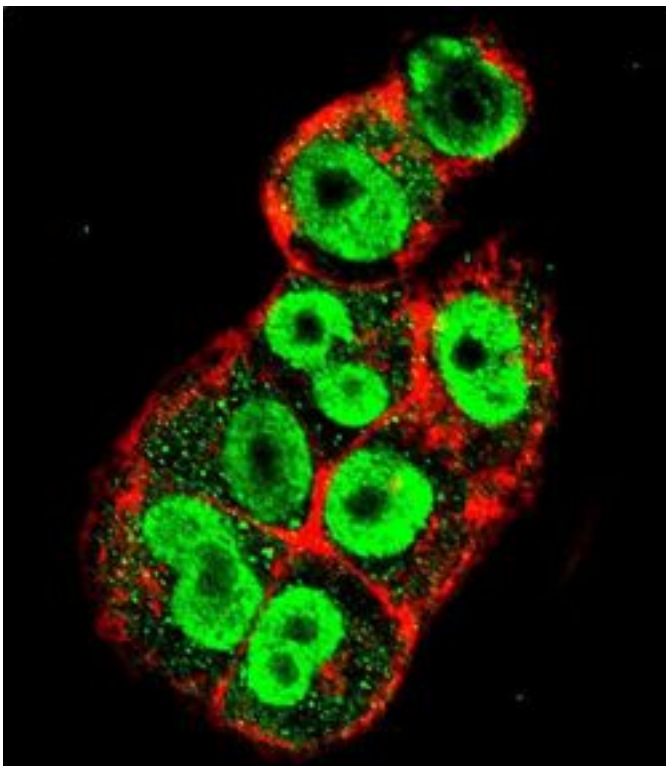
CatalogID:	LS-B10535
Validation:	This antibody replaces catalog number LS-C161890. It has been validated for use in the following assays: IHC-P.
Target:	TIMP metalloproteinase inhibitor 1 (TIMP1)
Synonyms:	TIMP1 Antibody, CLGI Antibody, EPA Antibody, HCI Antibody, Metalloproteinase inhibitor 1 Antibody, TIMP-1 Antibody, Collagenase inhibitor Antibody
Host	TIMP1 antibody was produced in Rabbit
Clonality:	Polyclonal
Immunogen Species:	TIMP1 antibody was raised against Human
Antigen Type:	Synthetic peptide
Immunogen:	TIMP1 antibody was raised against kLH-conjugated synthetic peptide from C-terminal region of human TIMP1.
Specificity:	Human TIMP-1
Epitope:	aa157-188
Reactivity:	Human
Purification:	Ammonium sulfate precipitation
Presentation:	PBS, 0.09% sodium azide
Recommended Storage:	Maintain refrigerated at 2-8°C for up to 6 months. For long term storage store at -20°C.
Uses:	IHC - Paraffin (1:100), Immunofluorescence (1:10 - 1:50), Western blot (1:1000), Flow Cytometry (1:10 - 1:50) (Optimal dilution to be determined by the researcher)
Size:	200 µl

Immunohistochemistry Image:



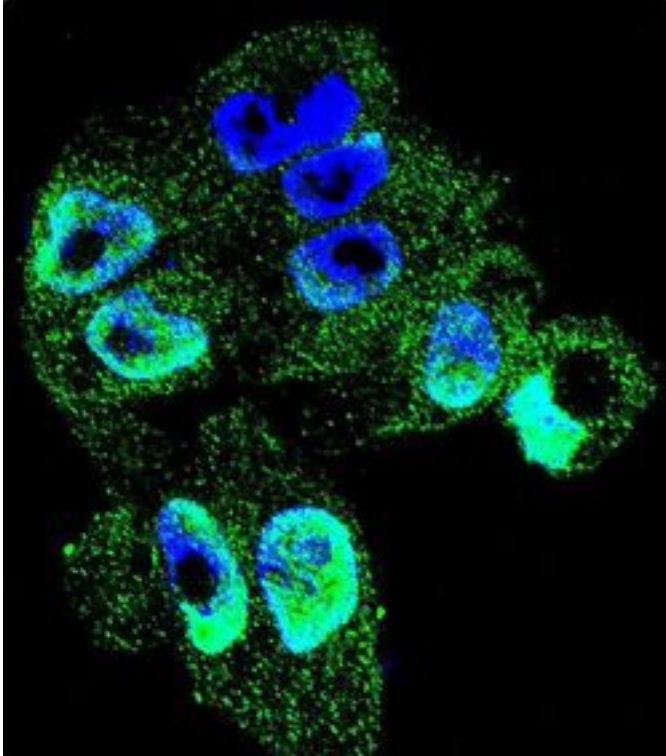
Human Testis: Formalin-Fixed, Paraffin-Embedded (FFPE)

Immunofluorescence Image:



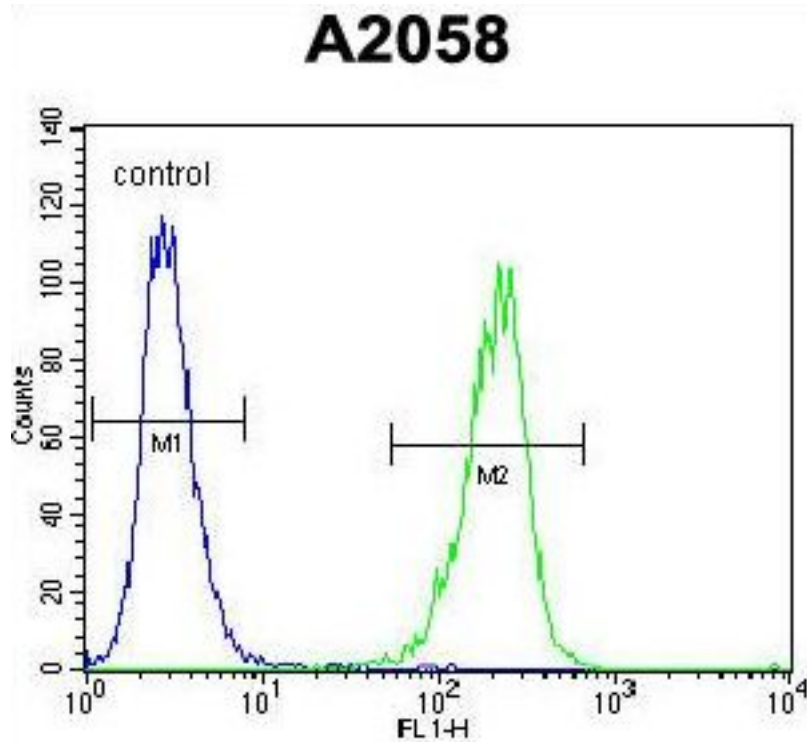
Confocal immunofluorescence of TIMP1 Antibody (C-term) with A2058 cell followed by Alexa Fluor 488-conjugated goat anti-rabbit IgG (green). Actin filaments have been labeled with Alexa Fluor 555 phalloidin (red).

Immunofluorescence Image:



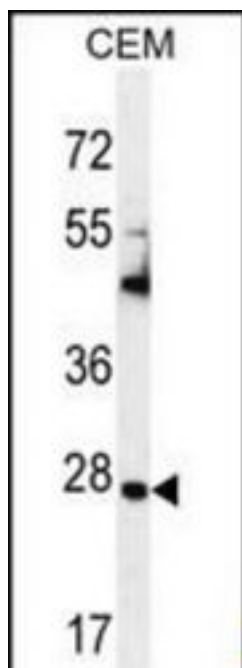
Confocal immunofluorescence of TIMP1 Antibody (C-term) with A2058 cell followed by Alexa Fluor 488-conjugated goat anti-rabbit IgG (green). DAPI was used to stain the cell nuclear (blue).

Flow Cytometry Image:



TIMP1 Antibody (C-term) flow cytometry of A2058 cells (right histogram) compared to a negative control cell (left histogram). FITC-conjugated goat-anti-rabbit secondary antibodies were used for the analysis.

Western Blot Image:



TIMP1 Antibody (C-term) Western blot of CEM cell line lysates (35 ug/lane). This demonstrates the TIMP1 antibody detected the TIMP1 protein (arrow).

Requested From:	Japan
Laboratory Reagent For In Vitro Research Use Only	
Not for resale without prior written consent from LifeSpan BioSciences, Inc.	
Created on 9/23/2014	
© 2014 LifeSpan BioSciences	