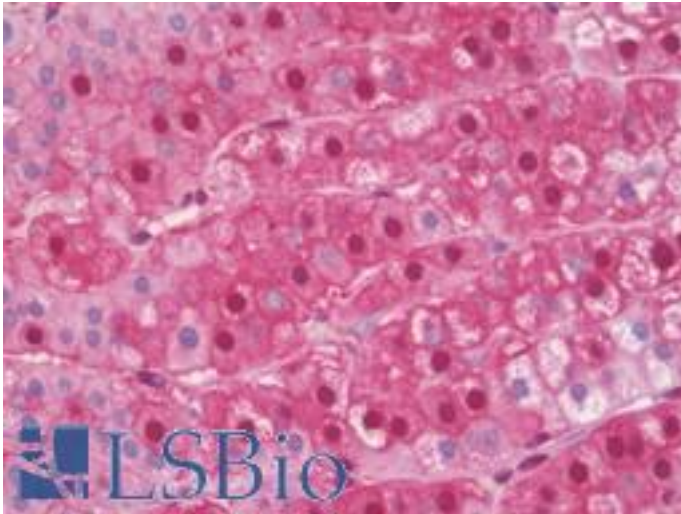


**PSMA5 Mouse anti-Human Monoclonal (426CT8.5.1) Antibody - LS-B10531 - LSBio**

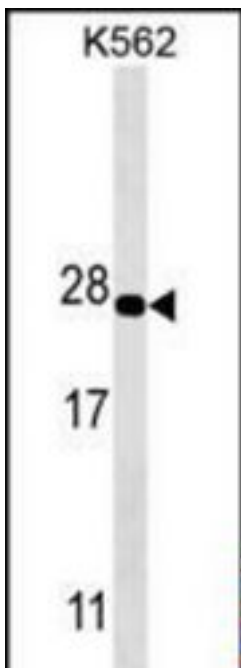
<b>CatalogID:</b>	LS-B10531
<b>Validation:</b>	This antibody replaces catalog number LS-C158748. It has been validated for use in the following assays: IHC-P.
<b>Target:</b>	proteasome (prosome, macropain) subunit, alpha type, 5 (PSMA5)
<b>Synonyms:</b>	PSMA5 Antibody, Proteasome component 5 Antibody, Proteasome subunit zeta Antibody, Proteasome alpha 5 subunit Antibody, Macropain zeta chain Antibody, Zeta Antibody, Proteasome zeta chain Antibody, Macropain subunit zeta Antibody, Proteasome alpha-type 5 Antibody, PSC5 Antibody
<b>Family / Subfamily:</b>	Protease Non Catalytic / Threonine T1
<b>Host</b>	PSMA5 antibody was produced in Mouse
<b>Clonality:</b>	Monoclonal
<b>Isotype:</b>	IgG1
<b>Clone Name:</b>	426CT8.5.1
<b>Immunogen Species:</b>	PSMA5 antibody was raised against Human
<b>Antigen Type:</b>	Purified protein
<b>Immunogen:</b>	PSMA5 antibody was raised against purified His-tagged PSMA5 protein fragment.
<b>Specificity:</b>	Human PSMA5
<b>Reactivity:</b>	Human
<b>Purification:</b>	Protein G purified
<b>Presentation:</b>	PBS, 0.09% sodium azide
<b>Recommended Storage:</b>	Maintain refrigerated at 2-8°C for up to 6 months. For long term storage store at -20°C.
<b>Uses:</b>	IHC - Paraffin (1:100), Western blot (1:100 - 1:500) (Optimal dilution to be determined by the researcher)
<b>Size:</b>	200 µl

**Immunohistochemistry Image:**



Human Adrenal: Formalin-Fixed, Paraffin-Embedded (FFPE)

**Western Blot Image:**



PSMA5 Antibody Western blot of K562 cell line lysates (35 ug/lane). This demonstrates the PSMA5 antibody detected the PSMA5 protein (arrow).

**Requested From:**

Japan

Laboratory Reagent For In Vitro Research Use Only

Not for resale without prior written consent from LifeSpan BioSciences, Inc.

Created on 9/23/2014

© 2014 LifeSpan BioSciences