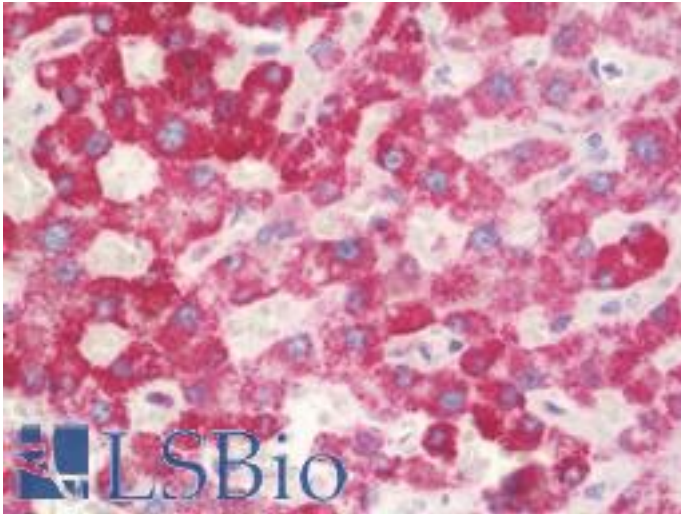


HSPD1 / HSP60 Mouse anti-Human Monoclonal (aa383-419) (4E101) Antibody - LS-B10529 - LSBio

CatalogID:	LS-B10529
Validation:	This antibody replaces catalog number LS-C15687. It has been validated for use in the following assays: IHC-P.
Target:	heat shock 60kDa protein 1 (chaperonin) (HSPD1)
Synonyms:	HSPD1 Antibody, 60 kDa chaperonin Antibody, CPN60 Antibody, Heat shock protein 65 Antibody, Heat shock protein 60 Antibody, HSP-60 Antibody, HSP60 Antibody, HuCHA60 Antibody, HLD4 Antibody, HSP65 Antibody, p60 lymphocyte protein Antibody, SPG13 Antibody, Chaperonin 60 Antibody, GROEL Antibody
Host	HSPD1 antibody was produced in Mouse
Clonality:	Monoclonal
Isotype:	IgG1
Clone Name:	4E101
Immunogen Species:	HSPD1 / HSP60 antibody was raised against Human
Antigen Type:	Recombinant protein
Immunogen:	HSPD1 / HSP60 antibody was raised against recombinant human Hsp60 produced in E. coli.
Specificity:	Recognizes human Hsp60 at ~60kD. Epitope: located within aa 383-419 of human Hsp60 (aa 356-393 of the mycobacterial Hsp60). Species Crossreactivity: mouse, rat, bovine, bacteria, C. elegans, chicken, canine, guinea pig, hamster, monkey, porcine, rabbit, plant.
Epitope:	aa383-419
Reactivity:	Human, Monkey, Mouse, Rat, Bovine, Dog, Guinea pig, Hamster, Pig, Rabbit, Chicken, Bacteria, Plant
Purification:	Protein G purified
Presentation:	PBS, pH 7.2, 0.1 mM PMSF, 50% glycerol.
Recommended Storage:	Long term: -20°C; Short term: +4°C. Avoid repeat freeze-thaw cycles.
Usage Summary:	Suitable for use in ELISA, Western Blot, Immunohistochemistry, Immunoprecipitation and FACS. Other applications not tested. Flow Cytometry: 10ug/ml. Optimal dilutions to be determined by researcher. Positive Controls: HeLa Heat Shocked Cell Lysate, Recombinant Human Hsp60 Protein
Uses:	IHC - Paraffin (10 µg/ml), Western blot, Flow Cytometry (10 µg/ml), ELISA (Optimal dilution to be determined by the researcher)
Size:	50 µg
Concentration:	1 mg/ml

Immunohistochemistry Image:



Human Liver: Formalin-Fixed, Paraffin-Embedded (FFPE)

Requested From:

Japan

Laboratory Reagent For In Vitro Research Use Only

Not for resale without prior written consent from LifeSpan BioSciences, Inc.

Created on 9/23/2014

© 2014 LifeSpan BioSciences