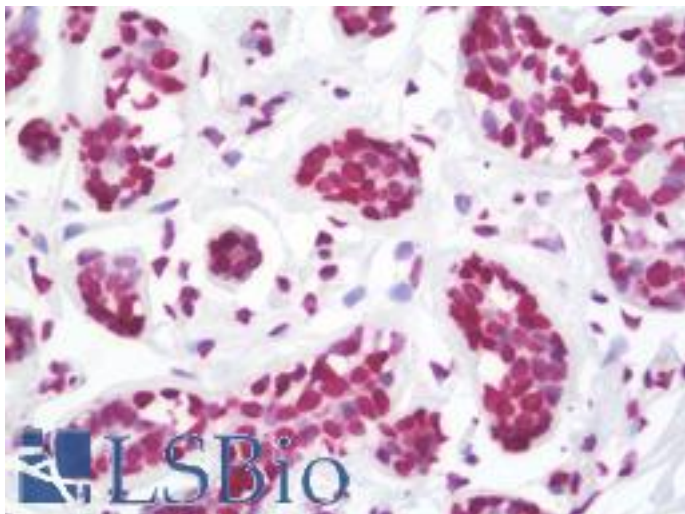


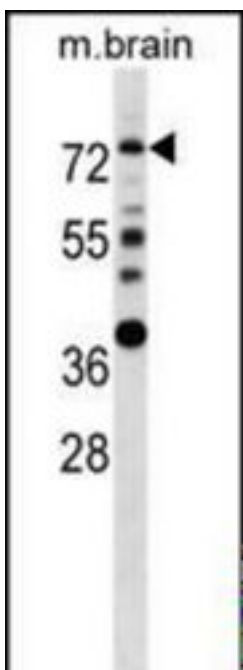
ER Alpha / Estrogen Receptor Rabbit anti-Human Polyclonal (aa53-301) Antibody - LS-B10527 - LSBio	
CatalogID:	LS-B10527
Validation:	This antibody replaces catalog number LS-C167829. It has been validated for use in the following assays: IHC-P.
Target:	estrogen receptor 1 (ESR1)
Synonyms:	ESR1 Antibody, Era Antibody, ERalpha Antibody, Estrogen receptor Antibody, Estradiol receptor Antibody, ER-alpha Antibody, Estrogen receptor 1 Antibody, NR3A1 Antibody, ER Antibody, ESR Antibody, ESRA Antibody, Estrogen receptor alpha Antibody
Family / Subfamily:	NHR / NR3 Steroid receptor
Host	ESR1 antibody was produced in Rabbit
Clonality:	Polyclonal
Immunogen Species:	ER Alpha / Estrogen Receptor antibody was raised against Human
Antigen Type:	Recombinant protein
Immunogen:	ER Alpha / Estrogen Receptor antibody was raised against recombinant protein from human ESR1.
Specificity:	Human ER / Estrogen Receptor
Epitope:	aa53-301
Reactivity:	Human, Mouse
Purification:	Immunoaffinity purified
Presentation:	PBS, 0.09% sodium azide
Recommended Storage:	Maintain refrigerated at 2-8°C for up to 6 months. For long term storage store at -20°C.
Uses:	IHC - Paraffin (1:100), Western blot (1:1000) (Optimal dilution to be determined by the researcher)
Size:	200 µl

Immunohistochemistry Image:



Human Breast: Formalin-Fixed, Paraffin-Embedded (FFPE)

Western Blot Image:



ESR1 Antibody Western blot of mouse brain tissue lysates (35 ug/lane). This demonstrates the ESR1 antibody detected the ESR1 protein (arrow).

Requested From:

Japan

Laboratory Reagent For In Vitro Research Use Only

Not for resale without prior written consent from LifeSpan BioSciences, Inc.

Created on 9/23/2014

© 2014 LifeSpan BioSciences