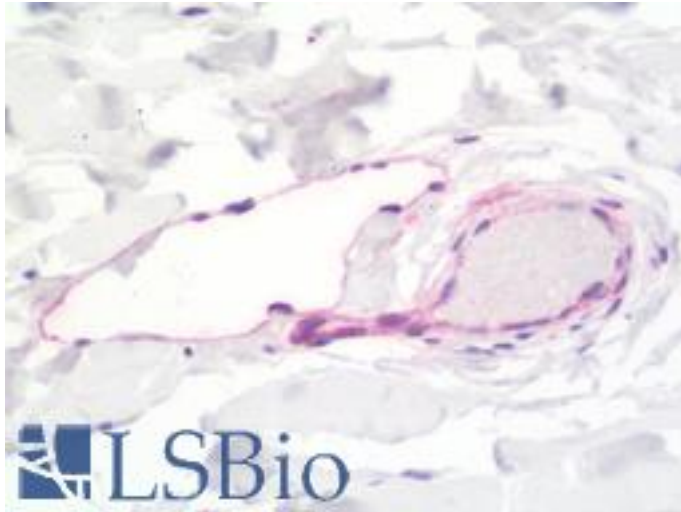


LYVE1 / LYVE-1 Rabbit anti-Human Polyclonal (aa46-77) Antibody - LS-B10511 - LSBio

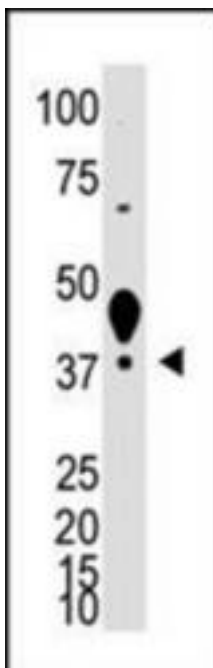
CatalogID:	LS-B10511
Validation:	This antibody replaces catalog number LS-C97672. It has been validated for use in the following assays: IHC-P.
Target:	lymphatic vessel endothelial hyaluronan receptor 1 (LYVE1)
Synonyms:	LYVE1 Antibody, CRSBP-1 Antibody, CRSBP1 Antibody, Hyaluronic acid receptor Antibody, LYVE-1 Antibody, XLKD1 Antibody, HAR Antibody
Host	LYVE1 antibody was produced in Rabbit
Clonality:	Polyclonal
Immunogen Species:	LYVE1 / LYVE-1 antibody was raised against Human
Antigen Type:	Synthetic peptide
Immunogen:	LYVE1 / LYVE-1 antibody was raised against kLH conjugated synthetic peptide selected from the N-terminal region of human XLKD1.
Epitope:	aa46-77
Reactivity:	Human, Mouse
Purification:	Immunoaffinity purified
Presentation:	PBS, 0.09% sodium azide
Recommended Storage:	Maintain refrigerated at 2-8°C for up to 6 months. For long term storage store at -20°C.
Uses:	IHC - Paraffin (1:100), Western blot (1:1000) (Optimal dilution to be determined by the researcher)
Size:	200 µl

Immunohistochemistry Image:



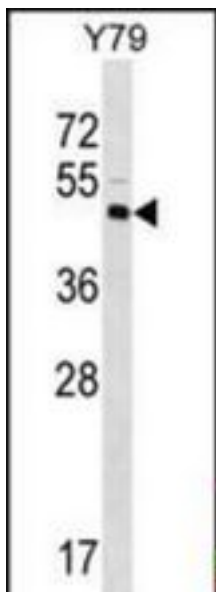
Human Breast: Formalin-Fixed, Paraffin-Embedded (FFPE)

Western Blot Image:



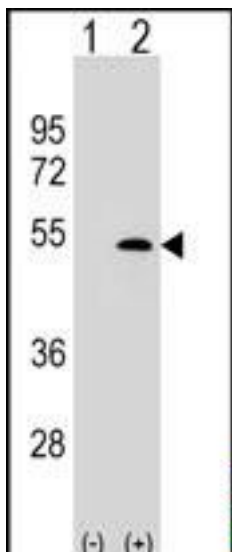
Western blot of XLKD1 antibody with mouse liver tissue lysate.

Western Blot Image:



XLKD1 Antibody (N-term) western blot analysis in Y79 cell line lysates (35 ug/lane). This demonstrates the XLKD1 antibody detected the XLKD1 protein (arrow).

Western Blot Image:



Western blot analysis of XLKD1 (arrow) using rabbit polyclonal XLKD1 Antibody (C61). 293 cell lysates (2 ug/lane) either nontransfected (Lane 1) or transiently transfected (Lane 2) with the XLKD1 gene.

Requested From:

Japan

Laboratory Reagent For In Vitro Research Use Only

Not for resale without prior written consent from LifeSpan BioSciences, Inc.

Created on 9/23/2014

© 2014 LifeSpan BioSciences