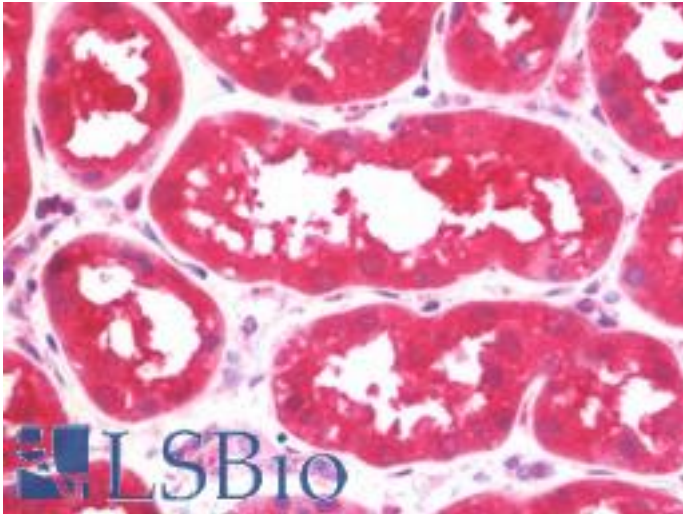


USP51 Rabbit anti-Human Polyclonal (aa278-307) Antibody - LS-B10510 - LSBio

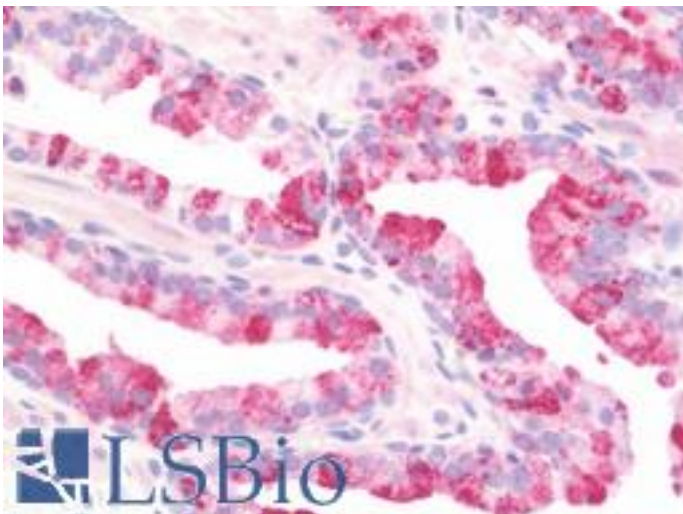
CatalogID:	LS-B10510
Validation:	This antibody replaces catalog number LS-C204039. It has been validated for use in the following assays: IHC-P.
Target:	Ubiquitin specific peptidase 51 (USP51)
Synonyms:	USP51 Antibody
Host	USP51 antibody was produced in Rabbit
Clonality:	Polyclonal
Immunogen Species:	USP51 antibody was raised against Human
Antigen Type:	Synthetic peptide
Immunogen:	USP51 antibody was raised against kLH conjugated synthetic peptide between amino acids 278-307 from internal region of human USP51.
Specificity:	Human USP51
Epitope:	aa278-307
Reactivity:	Human
Purification:	Immunoaffinity purified
Presentation:	PBS, 0.09% sodium azide.
Recommended Storage:	Short term 4°C, long term aliquot and store at -20°C, avoid freeze thaw cycles.
Uses:	IHC - Paraffin (1:100), Western blot (1:1000) (Optimal dilution to be determined by the researcher)
Size:	200 µl

Immunohistochemistry Image:



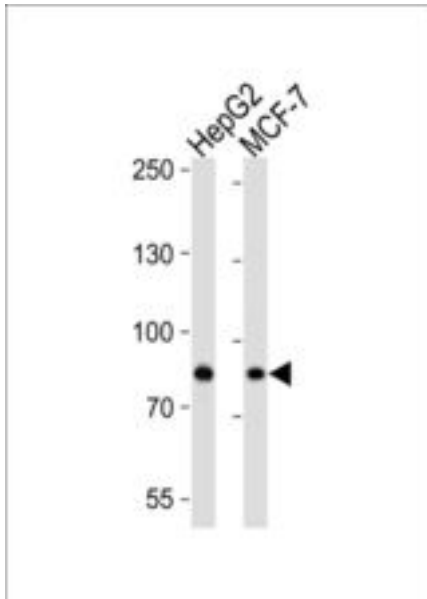
Human Kidney: Formalin-Fixed, Paraffin-Embedded (FFPE)

Immunohistochemistry Image:



Human Prostate: Formalin-Fixed, Paraffin-Embedded (FFPE)

Western Blot Image:



USP51 Antibody (Center) western blot analysis in HepG2,MCF-7 cell line lysates (35 ug/lane).This demonstrates the USP51 antibody detected the USP51 protein (arrow).

Requested From:

Japan

Laboratory Reagent For In Vitro Research Use Only

Not for resale without prior written consent from LifeSpan BioSciences, Inc.

Created on 9/23/2014

© 2014 LifeSpan BioSciences