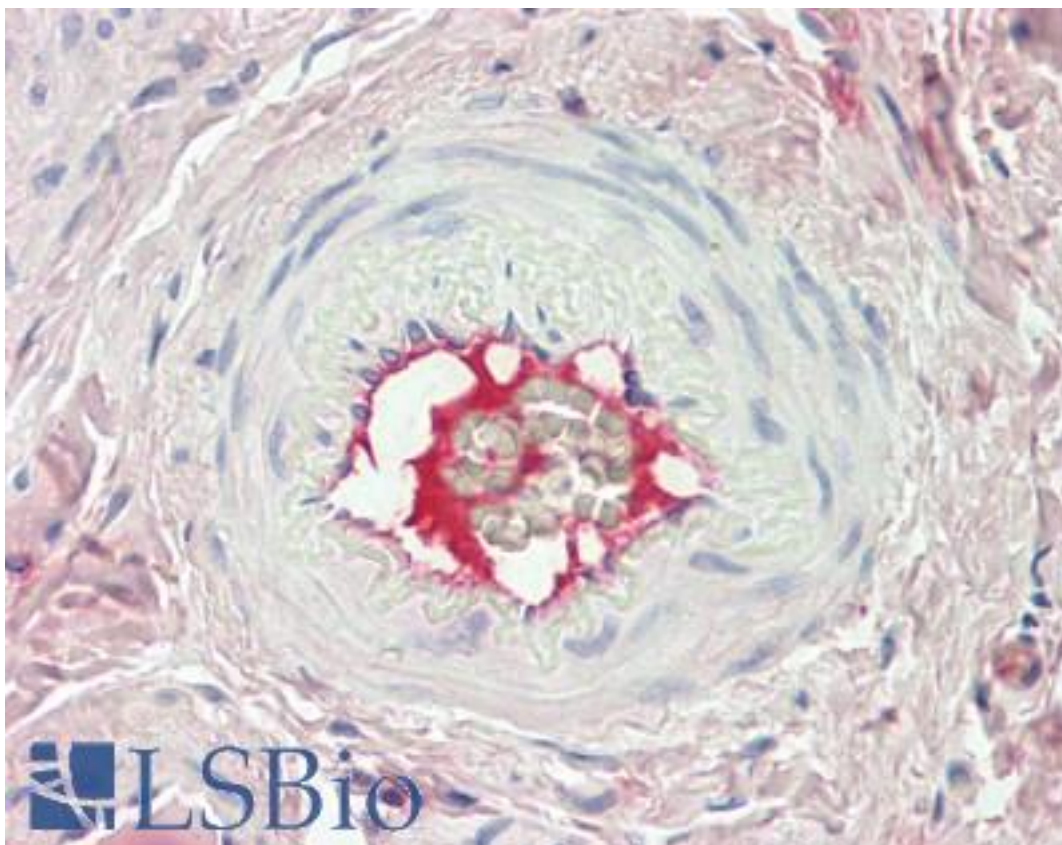


F2 / Prothrombin / Thrombin Sheep anti-Bovine Polyclonal Antibody - LS-B10509 - LSBio

CatalogID:	LS-B10509
Validation:	This antibody replaces catalog number LS-C39611. It has been validated for use in the following assays: IHC-P.
Target:	coagulation factor II (thrombin) (F2)
Synonyms:	F2 Antibody, Prothrombin B-chain Antibody, Coagulation factor II Antibody, FACTOR II Antibody, Prothrombin Antibody, PT Antibody, RPRGL2 Antibody, Serine protease Antibody, THPH1 Antibody, Thrombin Antibody
Family / Subfamily:	Protease / Serine S1
Host	F2 antibody was produced in Sheep
Clonality:	Polyclonal
Isotype:	IgG
Immunogen Species:	F2 / Prothrombin / Thrombin antibody was raised against Bovine
Antigen Type:	Protein
Immunogen:	F2 / Prothrombin / Thrombin antibody was raised against bovine a-Thrombin inactivated with PPACK.
Specificity:	When analyzed by immunoelectrophoresis, only one arc was seen with normal bovine plasma. Identity was verified using purified bovine thrombin.
Reactivity:	Bovine, Human
Purification:	Immunoaffinity purified
Presentation:	10 mM HEPES, pH 7.4, 0.15 M sodium chloride, 50% glycerol.
Recommended Storage:	Long term: -20°C; Short term: +4°C. Avoid repeat freeze-thaw cycles.
Usage Summary:	Suitable for use in ELISAs for bovine prothrombin and thrombin as well as thrombin-inhibitor complexes. This antibody preparation has been solid-phase adsorbed to remove nonspecific reactivities.
Uses:	IHC - Paraffin (2.5 µg/ml), ELISA (Optimal dilution to be determined by the researcher)
Size:	250 µg
Concentration:	2 mg/ml

Immunohistochemistry Image:



Human Vessel: Formalin-Fixed, Paraffin-Embedded (FFPE)

Requested From:

Japan

Laboratory Reagent For In Vitro Research Use Only

Not for resale without prior written consent from LifeSpan BioSciences, Inc.

Created on 9/23/2014

© 2014 LifeSpan BioSciences