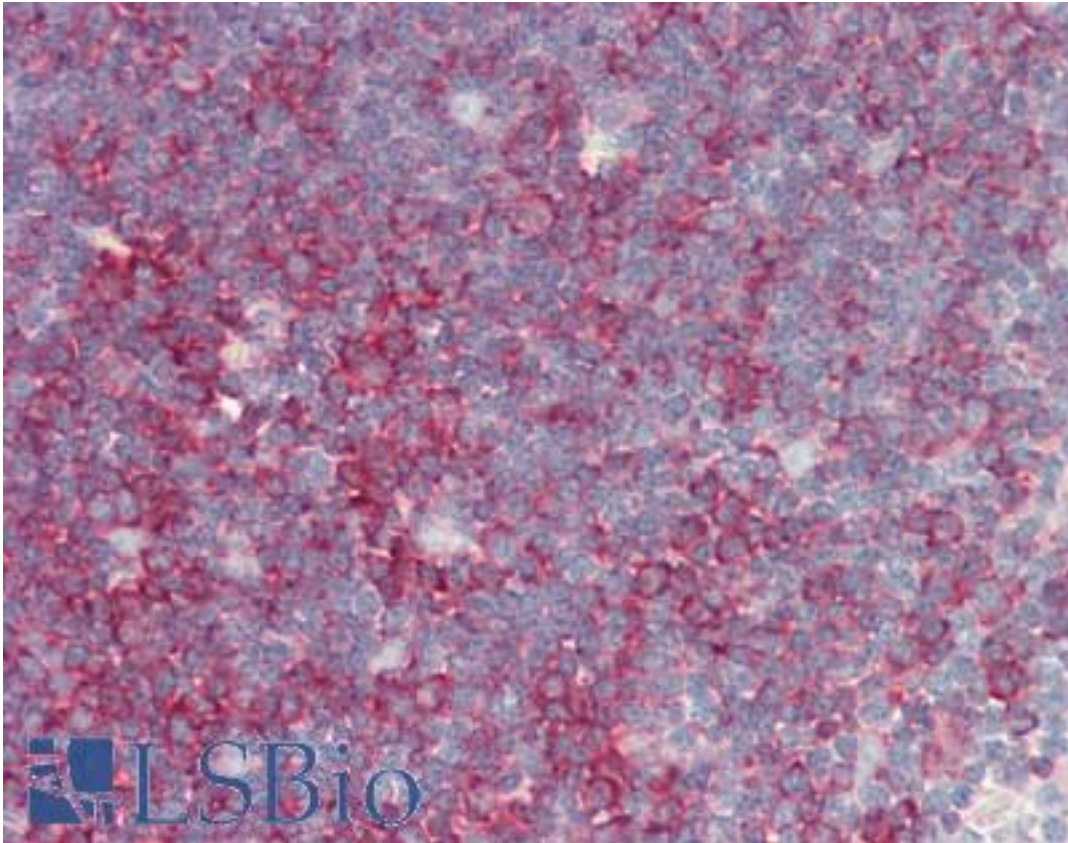


Alpha Tubulin Rat anti-Yeast Monoclonal (YOL1/34) Antibody - LS-B10508 - LSBio

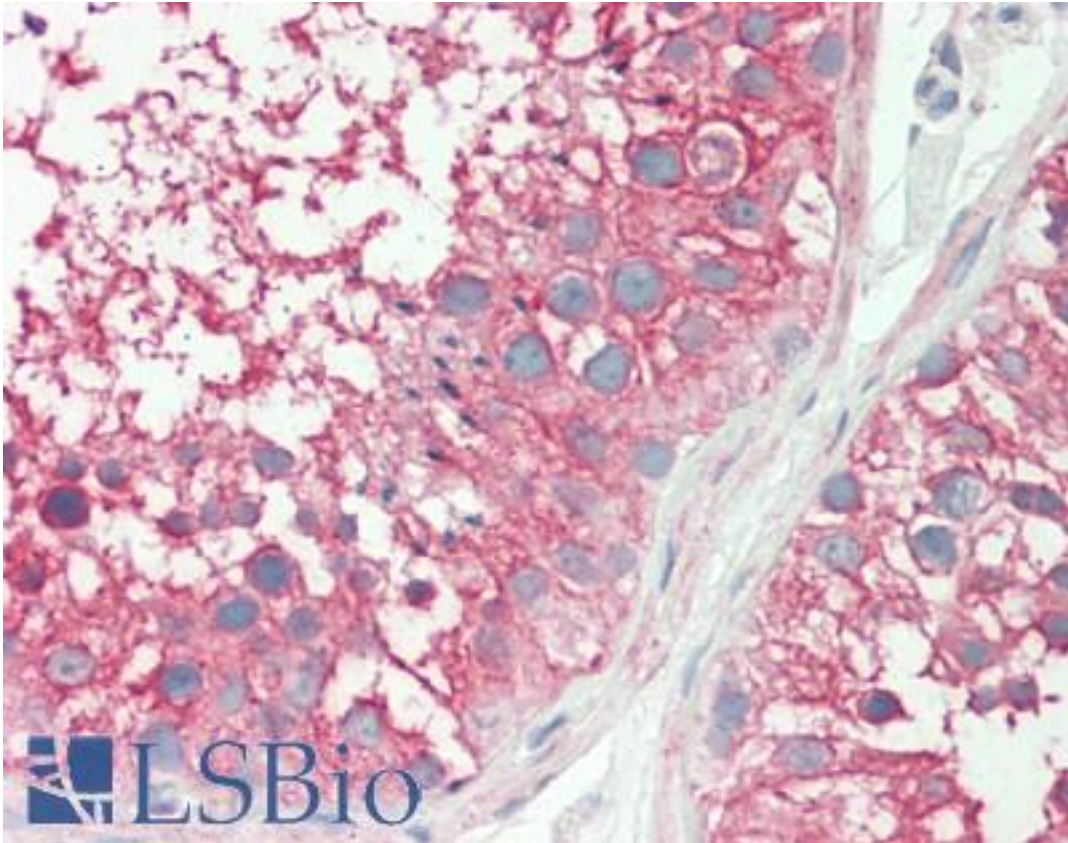
CatalogID:	LS-B10508
Validation:	This antibody replaces catalog number LS-C26400. It has been validated for use in the following assays: IHC-P.
Target:	Tubulin Alpha
Host	Tubulin Alpha antibody was produced in Rat
Clonality:	Monoclonal
Isotype:	IgG2a
Clone Name:	YOL1/34
Immunogen Species:	Alpha Tubulin antibody was raised against Yeast
Antigen Type:	Purified protein
Immunogen:	Alpha Tubulin antibody was raised against yeast tubulin.
Specificity:	Specifically recognizes the alpha subunit of tubulin. The reactivity pattern is similar to that seen with similar clones. Species cross-reactivity: Yeast, avian and mammalian tubulin.
Reactivity:	Yeast, Avian, Mammal
Purification:	Protein G purified
Presentation:	PBS, 0.09% sodium azide
Recommended Storage:	Long term: -20°C; Short term: +4°C. Avoid repeat freeze-thaw cycles.
Usage Summary:	Suitable for use in Immunohistochemistry, ELISA, Western Blot and RIA. Immunohistochemistry: Frozen. ELISA: 10 ug/ul as detection antibody.
Uses:	IHC - Paraffin (10 µg/ml), IHC - Frozen, Western blot, ELISA, Radioimmunoassay (Optimal dilution to be determined by the researcher)
Size:	250 µg
Concentration:	1 mg/ml

Immunohistochemistry Image:



Human Thymus: Formalin-Fixed, Paraffin-Embedded (FFPE)

Immunohistochemistry Image:



Human Testis: Formalin-Fixed, Paraffin-Embedded (FFPE)

Requested From:

Japan

Laboratory Reagent For In Vitro Research Use Only

Not for resale without prior written consent from LifeSpan BioSciences, Inc.

Created on 9/23/2014

© 2014 LifeSpan BioSciences