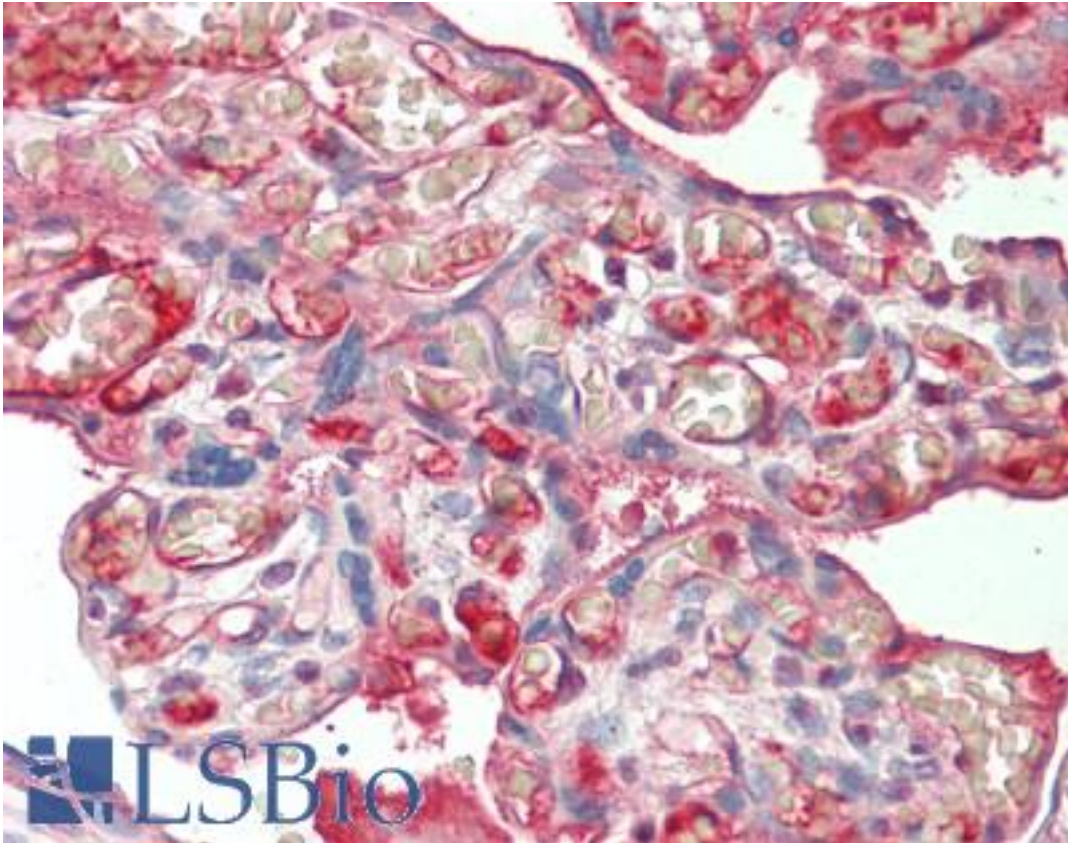


ALB / Serum Albumin Goat anti-Human Polyclonal (FITC) Antibody - LS-B10507 - LSBio

CatalogID:	LS-B10507
Validation:	This antibody replaces catalog number LS-C196046. It has been validated for use in the following assays: IHC-P.
Target:	albumin
Synonyms:	ALB Antibody, Albumin (32 AA) Antibody, Albumin (AA 34) Antibody, Albumin Antibody, Growth-inhibiting protein 20 Antibody, PRO1341 Antibody, PRO0883 Antibody, Serum albumin Antibody, PRO0903 Antibody
Host	ALB antibody was produced in Goat
Clonality:	Polyclonal
Isotype:	IgG
Conjugations:	Fluorescein (FITC)
Immunogen Species:	ALB / Serum Albumin antibody was raised against Human
Reactivity:	Human
Purification:	Affinity purified
Presentation:	PBS, 0.2% BSA, 0.1% sodium azide
Recommended Storage:	Store at 4°C.
Uses:	IHC (1:100 - 1:1000), IHC - Paraffin (10 µg/ml), ICC (1:100 - 1:1000) (Optimal dilution to be determined by the researcher)
Size:	250 µg
Concentration:	0.5 mg/ml

Immunohistochemistry Image:



Human Placenta: Formalin-Fixed, Paraffin-Embedded (FFPE)

Requested From:

Japan

Laboratory Reagent For In Vitro Research Use Only

Not for resale without prior written consent from LifeSpan BioSciences, Inc.

Created on 9/23/2014

© 2014 LifeSpan BioSciences