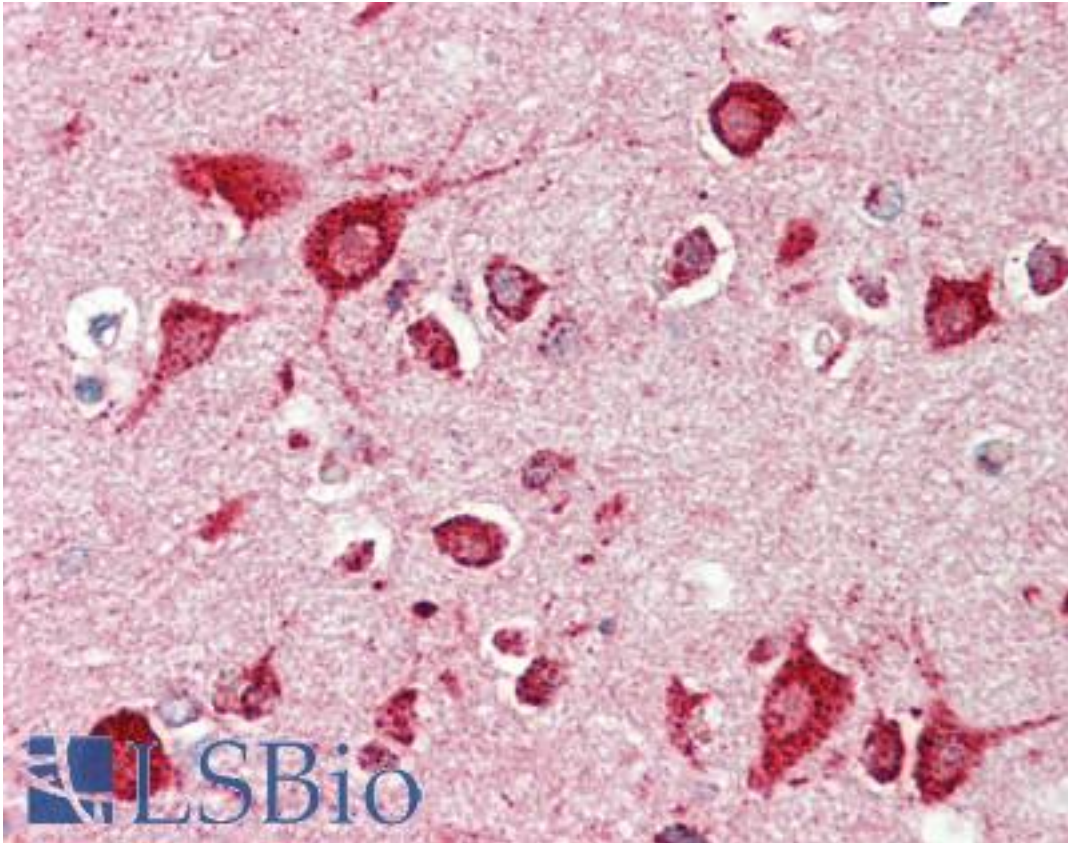


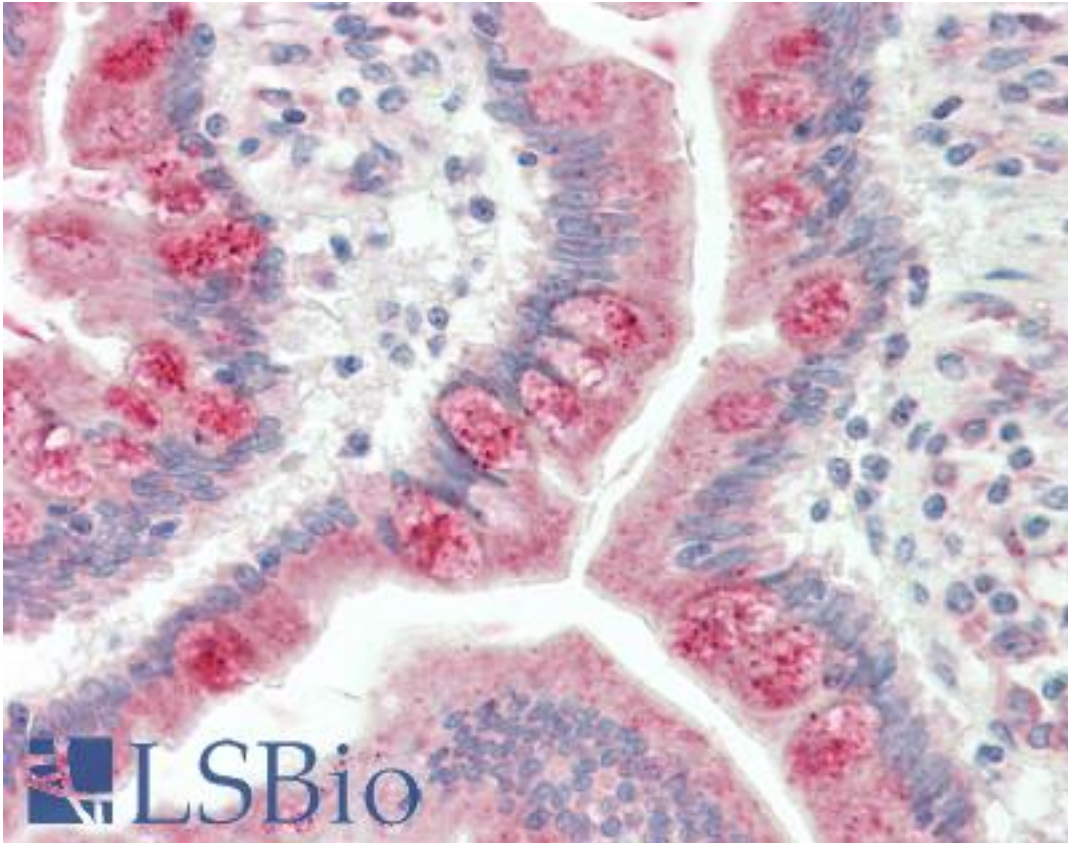
MC3R / MC3 Receptor Rabbit anti-Human Polyclonal (aa 86-112) Antibody - LS-B10506 - LSBio	
CatalogID:	LS-B10506
Validation:	This antibody replaces catalog number LS-C164070. It has been validated for use in the following assays: IHC-P.
Target:	melanocortin 3 receptor (MC3R)
Synonyms:	MC3R Antibody, BMIQ9 Antibody, MC3 receptor Antibody, Melanocortin receptor 3 Antibody, OB20 Antibody, MC3 Antibody, MC3-R Antibody, Melanocortin 3 receptor Antibody, OQTL Antibody
Family / Subfamily:	GPCR / Melanocortin
Host	MC3R antibody was produced in Rabbit
Clonality:	Polyclonal
Immunogen Species:	MC3R / MC3 Receptor antibody was raised against Human
Antigen Type:	Synthetic peptide
Immunogen:	MC3R / MC3 Receptor antibody was raised against kLH-conjugated synthetic peptide from internal region of human MC3R.
Specificity:	Human MC3R
Epitope:	aa 86-112
Reactivity:	Human
Purification:	Immunoaffinity purified
Presentation:	PBS, 0.09% sodium azide
Recommended Storage:	Maintain refrigerated at 2-8°C for up to 6 months. For long term storage store at -20°C.
Uses:	IHC - Paraffin (1:100), Western blot (1:1000), Flow Cytometry (1:10 - 1:50) (Optimal dilution to be determined by the researcher)
Size:	200 µl

Immunohistochemistry Image:



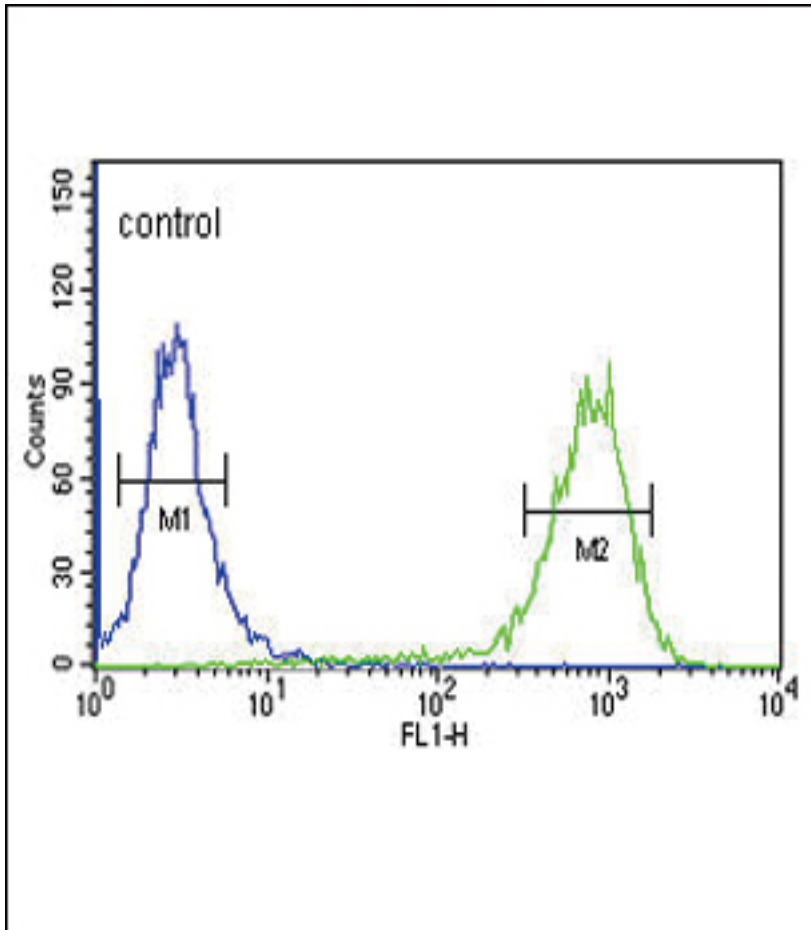
Human Brain, Cortex: Formalin-Fixed, Paraffin-Embedded (FFPE)

Immunohistochemistry Image:



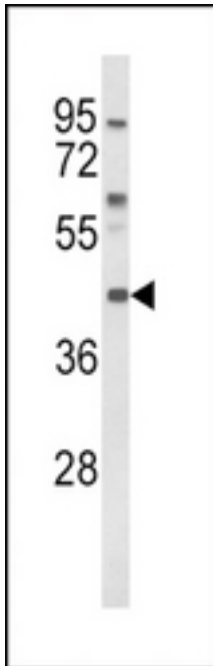
Human Small Intestine: Formalin-Fixed, Paraffin-Embedded (FFPE)

Flow Cytometry Image:



MC3R Antibody (Center) flow cytometry of K562 cells (right histogram) compared to a negative control cell (left histogram). FITC-conjugated goat-anti-rabbit secondary antibodies were used for the analysis.

Western Blot Image:



Western blot of MC3R Antibody (Center) in K562 cell line lysates (35 ug/lane). MC3R (arrow) was detected using the purified Pab.

Requested From:

Japan

Laboratory Reagent For In Vitro Research Use Only

Not for resale without prior written consent from LifeSpan BioSciences, Inc.

Created on 9/23/2014

© 2014 LifeSpan BioSciences