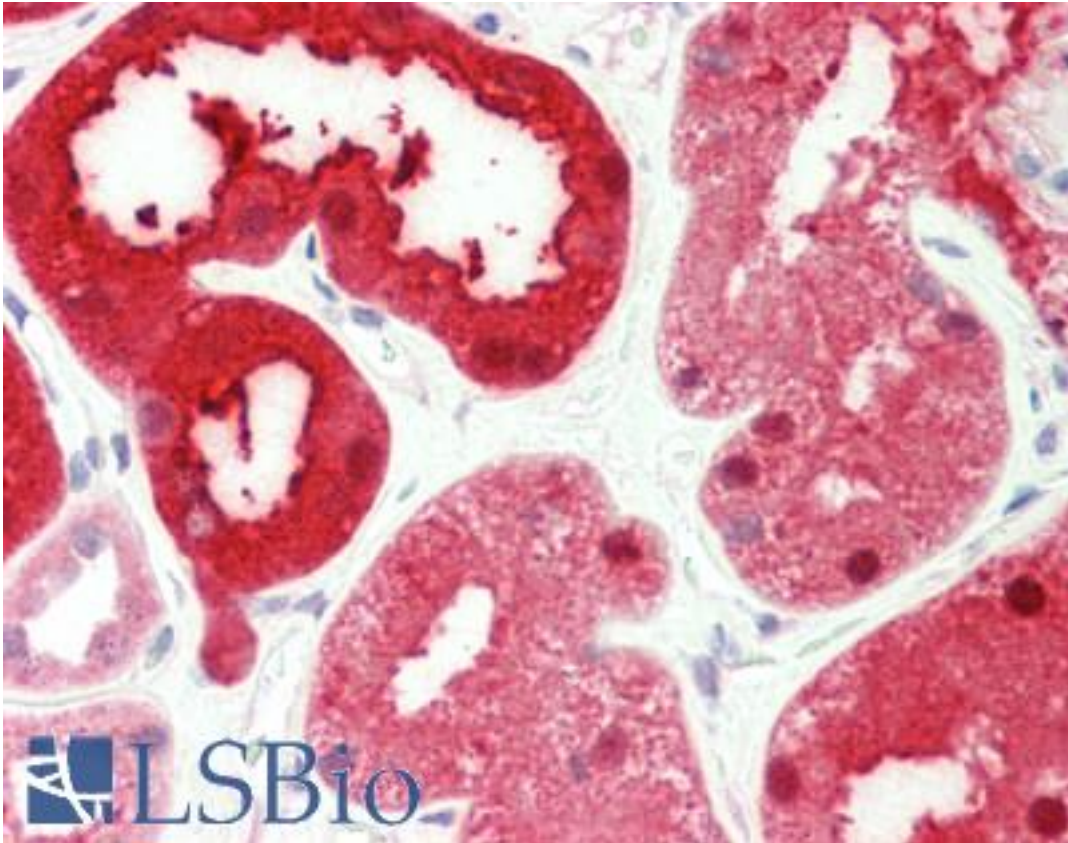


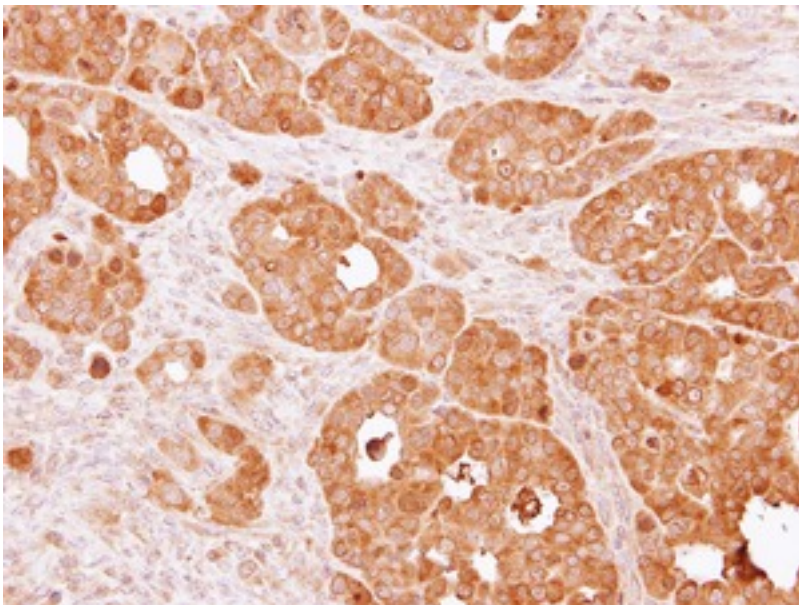
PSAT1 Rabbit anti-Human Polyclonal (aa48-328) Antibody - LS-B10505 - LSBio	
CatalogID:	LS-B10505
Validation:	This antibody replaces catalog number LS-C186166. It has been validated for use in the following assays: IHC-P.
Target:	phosphoserine aminotransferase 1 (PSAT1)
Synonyms:	PSAT1 Antibody, EPIP Antibody, Phosphoserine aminotransferase Antibody, PSA Antibody, PSAT Antibody
Host	PSAT1 antibody was produced in Rabbit
Clonality:	Polyclonal
Isotype:	IgG
Immunogen Species:	PSAT1 antibody was raised against Human
Antigen Type:	Recombinant protein
Immunogen:	PSAT1 antibody was raised against recombinant fragment corresponding to a region within amino acids 48 and 328 of PSAT1 (SwissProt Q9Y617). Percent identity by BLAST analysis: Human (100%); Rat, Bovine (95%); Rabbit (94%); Xenopus (82%).
Specificity:	Human PSAT1
Epitope:	aa48-328
Reactivity:	Human, Mouse
Purification:	Immunoaffinity purified
Presentation:	0.1 M Tris-glycine, pH 7.0, 10% glycerol, 0.01% Thimerosal
Recommended Storage:	Keep as concentrated solution. Aliquot and store at -20°C or below. Avoid multiple freeze-thaw cycles.
Usage Summary:	IHC-paraffin: Suggested antigen retrieval using heat mediated 10 mM Citrate buffer (pH 6.0) or Tris-EDTA buffer (pH 8.0).
Uses:	IHC - Paraffin (5 µg/ml), ICC (1:100 - 1:1000), Western blot (1:500 - 1:3000) (Optimal dilution to be determined by the researcher)
Size:	50 µl
Concentration:	0.68 mg/ml

Immunohistochemistry Image:



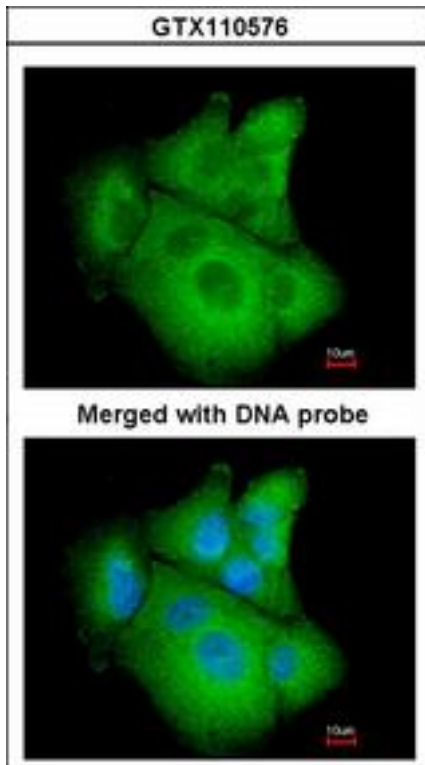
Human Kidney: Formalin-Fixed, Paraffin-Embedded (FFPE)

Immunohistochemistry Image:



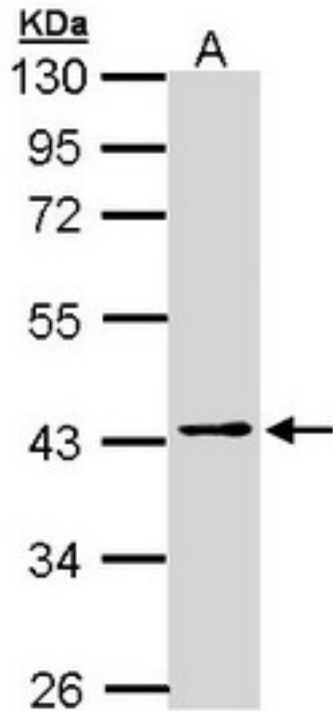
IHC of paraffin-embedded NCI-N87 xenograft using PSAT1 antibody at 1:500 dilution.

Immunocytochemistry Image:



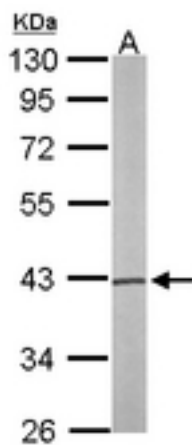
Immunofluorescence of paraformaldehyde-fixed A549 using PSAT1 antibody at 1:200 dilution.

Western Blot Image:



Sample (30 ug of whole cell lysate). A: H1299. 10% SDS PAGE. PSAT1 antibody diluted at 1:1000

Western Blot Image:



Sample (50 ug of whole cell lysate). A: Mouse brain. 10% SDS PAGE. PSAT1 antibody diluted at 1:1000.

Requested From:

Japan

Laboratory Reagent For In Vitro Research Use Only

Not for resale without prior written consent from LifeSpan BioSciences, Inc.

Created on 9/23/2014

© 2014 LifeSpan BioSciences