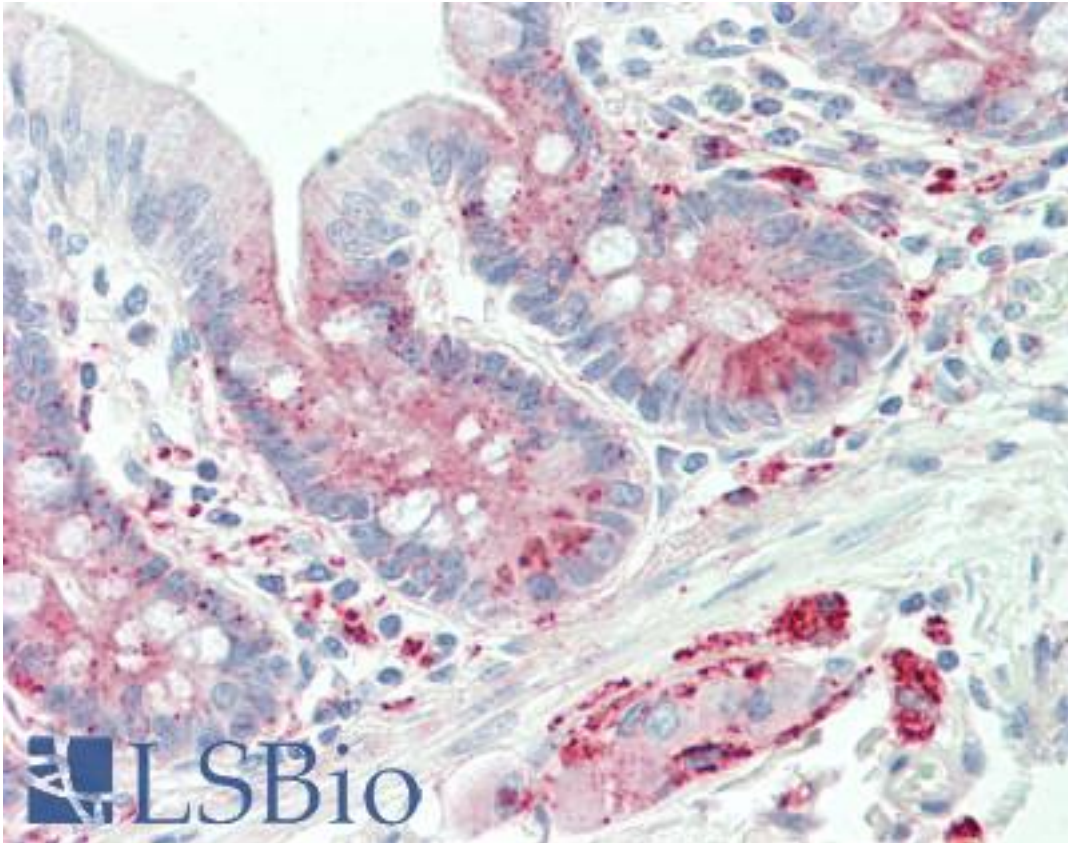


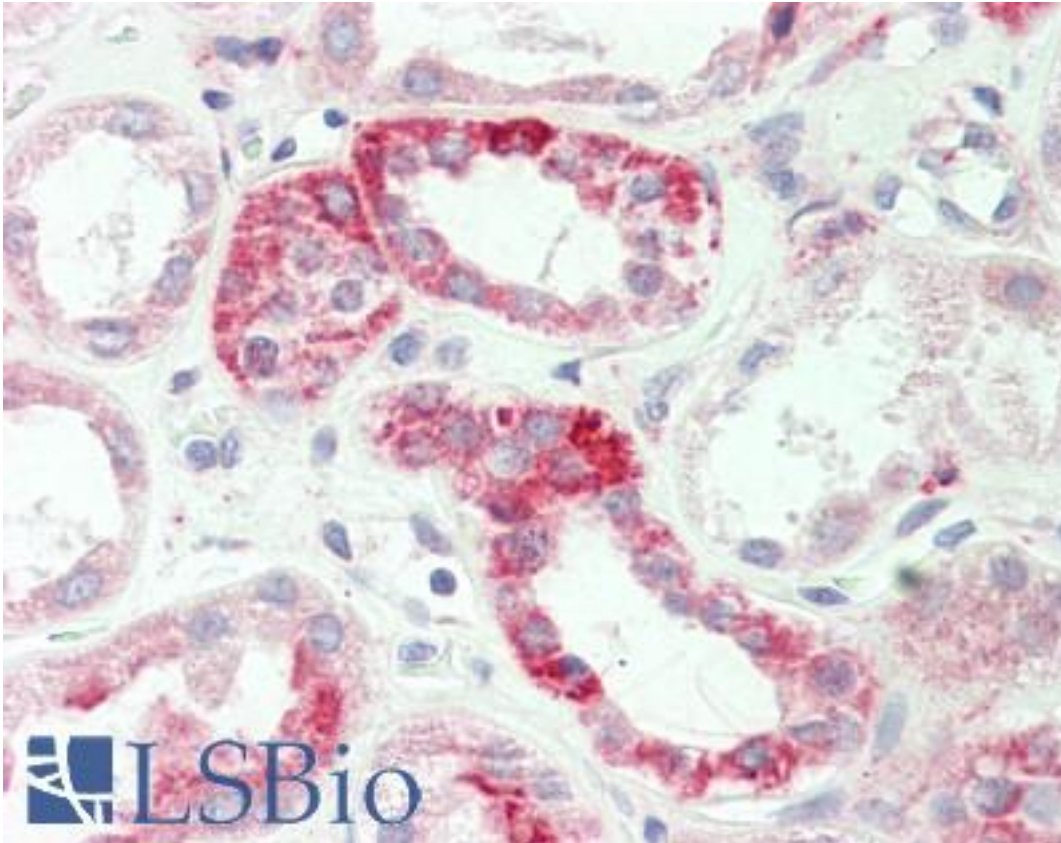
ADORA1 / Adenosine A1 Receptor Rabbit anti-Human Polyclonal (Asp326) Antibody - LS-B10504 - LSBio	
CatalogID:	LS-B10504
Validation:	This antibody replaces catalog number LS-C177189. It has been validated for use in the following assays: IHC-P.
Target:	adenosine A1 receptor (ADORA1)
Synonyms:	ADORA1 Antibody, A1 adenosine receptor Antibody, A1ar Antibody, Adenosine A1 receptor Antibody, Adenosine receptor A1 Antibody, ADO-A1 receptor Antibody, RDC7 Antibody
Family / Subfamily:	GPCR / Adenosine
Host	ADORA1 antibody was produced in Rabbit
Clonality:	Polyclonal
Immunogen Species:	ADORA1 / Adenosine A1 Receptor antibody was raised against Human
Antigen Type:	Synthetic peptide
Immunogen:	ADORA1 / Adenosine A1 Receptor antibody was raised against synthetic peptide around Asp326 of human Adenosine A1 Receptor / ADORA1
Specificity:	Human Adenosine A1 Receptor / ADORA1
Epitope:	Asp326
Reactivity:	Human, Mouse, Rat
Purification:	Immunoaffinity purified
Presentation:	PBS, pH 7.2, 0.05% sodium azide
Recommended Storage:	Store at 4°C short term. Aliquot and store at -20°C long term. Avoid freeze-thaw cycles.
Uses:	IHC - Paraffin (5 µg/ml), Immunofluorescence (1:50 - 1:200), Western blot (1:500 - 1:1000) (Optimal dilution to be determined by the researcher)
Size:	50 µl
Concentration:	1 mg/ml

Immunohistochemistry Image:



Human Small Intestine: Formalin-Fixed, Paraffin-Embedded (FFPE)

Immunohistochemistry Image:



Human Kidney: Formalin-Fixed, Paraffin-Embedded (FFPE)

Western Blot Image:



Western blot of Adenosine A1-R (D326) pAb in extracts from MCF-7 cells.

Requested From:

Japan

Laboratory Reagent For In Vitro Research Use Only

Not for resale without prior written consent from LifeSpan BioSciences, Inc.

Created on 9/23/2014

© 2014 LifeSpan BioSciences