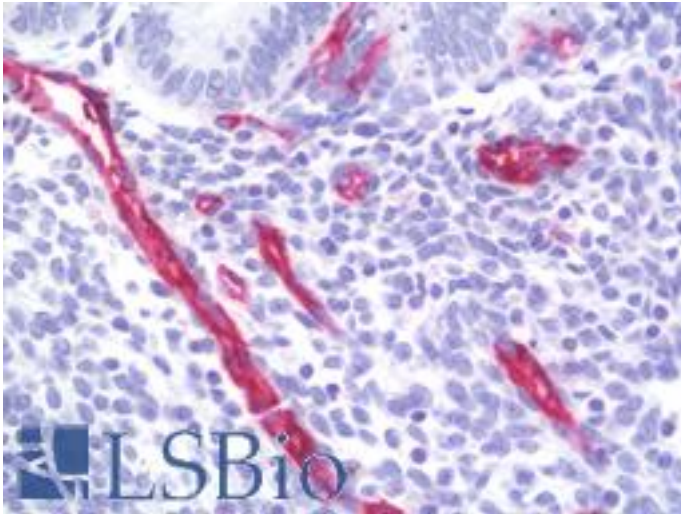


PECAM-1 / CD31 Mouse anti-Human Monoclonal (1H6) Antibody - LS-B10502 - LSBio

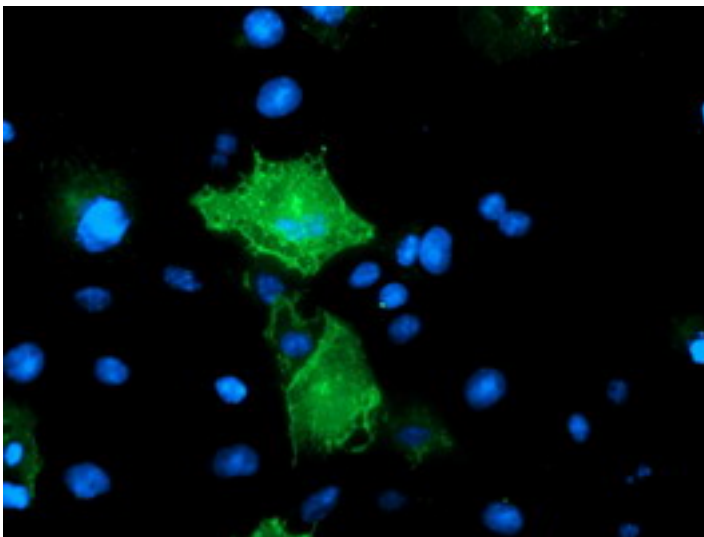
<b>CatalogID:</b>	LS-B10502
<b>Validation:</b>	This antibody replaces catalog number LS-C173973. It has been validated for use in the following assays: IHC-P.
<b>Target:</b>	platelet/endothelial cell adhesion molecule 1 (PECAM1)
<b>Synonyms:</b>	PECAM1 Antibody, CD31 Antibody, CD31 antigen Antibody, EndoCAM Antibody, PECA1 Antibody, PECAM-1 Antibody, GPIIA Antibody
<b>Host</b>	PECAM1 antibody was produced in Mouse
<b>Clonality:</b>	Monoclonal
<b>Isotype:</b>	IgG1
<b>Clone Name:</b>	1H6
<b>Immunogen Species:</b>	PECAM-1 / CD31 antibody was raised against Human
<b>Antigen Type:</b>	Recombinant protein
<b>Immunogen:</b>	PECAM-1 / CD31 antibody was raised against full length human recombinant protein of human PECAM1(NP_00433) produced in HEK293T cell.
<b>Specificity:</b>	Human CD31
<b>Reactivity:</b>	Human, Dog
<b>Purification:</b>	Affinity purified
<b>Presentation:</b>	PBS, pH 7.3, 1% BSA, 50% glycerol, 0.02% sodium azide
<b>Recommended Storage:</b>	Store at -20°C. Minimize freezing and thawing.
<b>Uses:</b>	IHC - Paraffin (20 µg/ml), Immunofluorescence (1:100), Western blot (1:500 - 1:2000), Flow Cytometry (1:100) (Optimal dilution to be determined by the researcher)
<b>Size:</b>	50 µl
<b>Concentration:</b>	1 mg/ml

**Immunohistochemistry Image:**



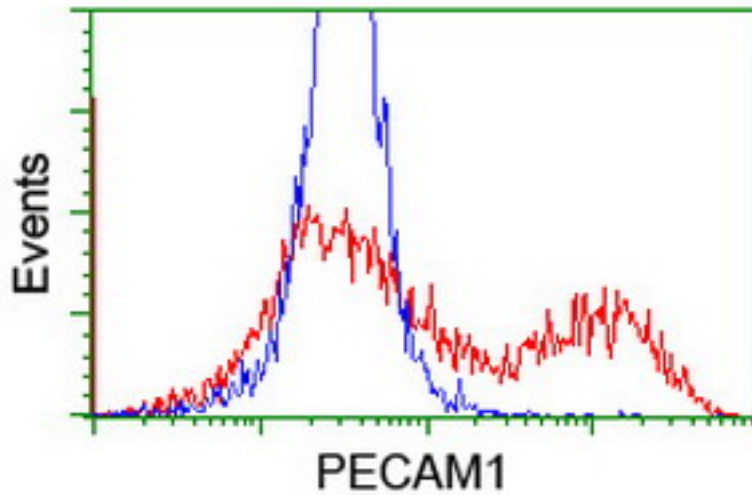
Human Uterus, Endometrium: Formalin-Fixed, Paraffin-Embedded (FFPE)

**Immunofluorescence Image:**



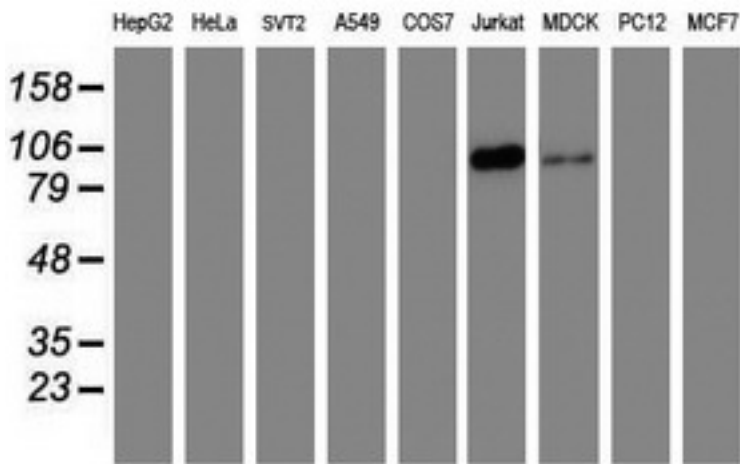
Anti-PECAM1 mouse monoclonal antibody immunofluorescent staining of COS7 cells transiently transfected by pCMV6-ENTRY PECAM1.

**Flow Cytometry Image:**



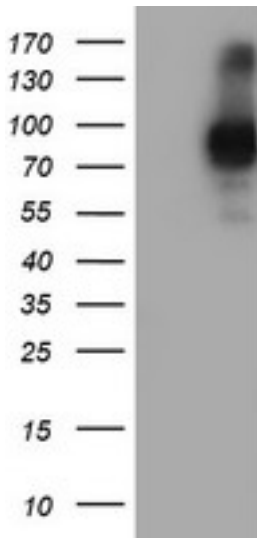
HEK293T cells transfected with either overexpress plasmid (Red) or empty vector control plasmid (Blue) were immunostained by anti-PECAM1 antibody, and then analyzed by flow cytometry.

**Western Blot Image:**



Western blot of extracts (35 ug) from 9 different cell lines by using g anti-PECAM1 monoclonal antibody (HepG2: human; HeLa: human; SVT2: mouse; A549: human; COS7: monkey; Jurkat: human; MDCK: canine; PC12: rat; MCF7: human).

**Western Blot Image:**



HEK293T cells were transfected with the pCMV6-ENTRY control (Left lane) or pCMV6-ENTRY PECAM1 (Right lane) cDNA for 48 hrs and lysed. Equivalent amounts of cell lysates (5 ug per lane) were separated by SDS-PAGE and immunoblotted with anti-PECAM1.

**Requested From:**

Japan

Laboratory Reagent For In Vitro Research Use Only

Not for resale without prior written consent from LifeSpan BioSciences, Inc.

Created on 9/23/2014

© 2014 LifeSpan BioSciences